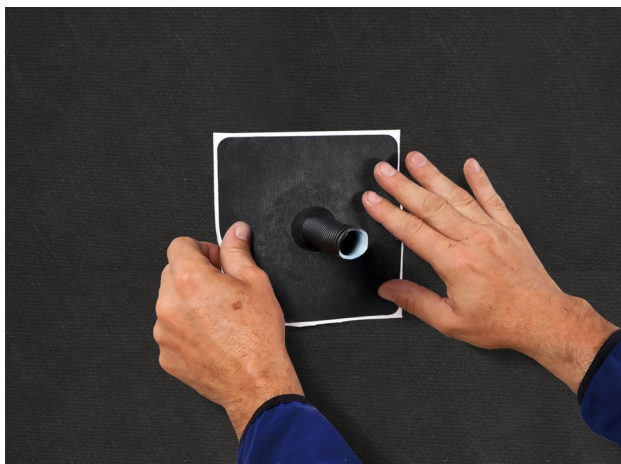


Installation instructions

ROFLEX

Self-adhesive grommets, 15–30 mm



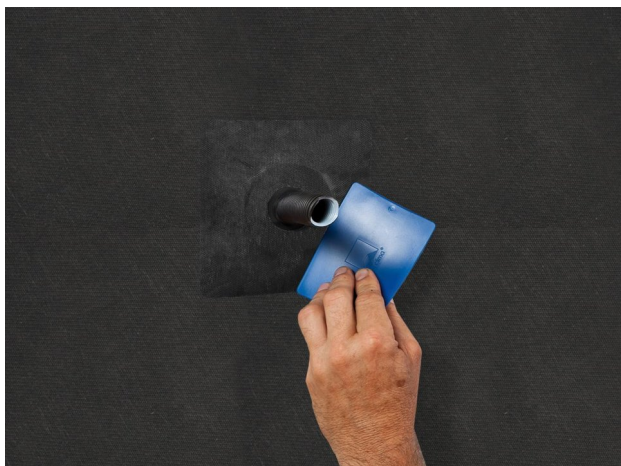
1. Pull pipe/cable through

Clean the subsurface, then pull the grommet over the pipe or cable. The plain black variant of this grommet (shown here) is intended for use on black facade membranes (SOLITEX FRONTA series) installed behind open-jointed cladding.



2. Remove the release paper

Remove the release paper around the pipe/cable feed-through.



3. Stick the grommet

Press the grommet into place so that it rests flat on the subsurface, stick and rub firmly to secure the adhesive bond. The PRESSFIX application tool is ideal for this.

Multi-duct grommet, 15-30 mm



1. Preparation

Subsurfaces must have sufficient stability and be dry, level and free of dust, silicone and grease. Brush off subsurfaces; if necessary, clean with a vacuum cleaner and wipe down.



3. Punch holes

Punch the required number of holes at the markings on the template using a round punch and a hammer.

Note: The subsurface can be damaged by the punching process. If necessary, use a protective layer.



2. Put the template in place

Remove the installation set from its plastic packaging. Place the EPDM grommet on a cardboard underlay. Put the punching template in place and align it with the EPDM grommet so that the edges match.



4. Guide the conduits through

Gradually pull the tubes through the grommet. Press the grommet into place so that it rests flat on the subsurface, and align it in place.



5. Stick the grommet

Stick the grommet around its perimeter using the TESCON VANA (or TESCON INVIS) system adhesive tape. Centre the tape and ensure that there is sufficient resistance pressure. Ensure that the overlaps are waterproof in underlay areas (first carry out adhesion at the bottom, then at the left and right, and finally at the top).



6. Rub to secure the adhesive bond

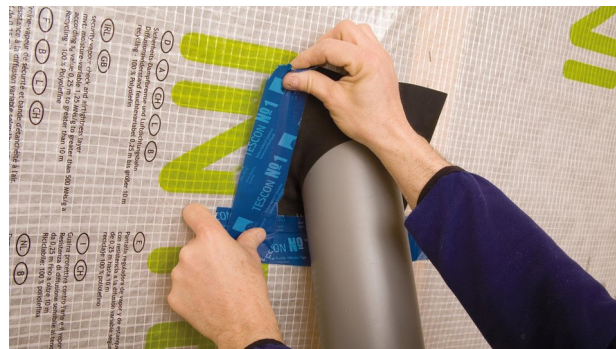
As a final step, rub all adhesive strips firmly to secure the adhesive bond. This work can be carried out more efficiently and in a manner that is kinder to your hands by using the PRESSFIX application tool.

ROFLEX 30–320 mm



1. Pull the grommet over the pipe and align it

Select a grommet to suit the diameter of the pipe, pull it over the pipe, guide it as far as the subsurface and align it as desired.



2. Tape the grommet and rub firmly to secure the adhesive bond

Tape the grommet to the subsurface and rub the tape firmly to secure the adhesive bond. Ensure that there is sufficient resistance pressure. This work can be carried out more efficiently and in a manner that is kinder to your hands by using the PRESSFIX application tool.



3. Also for exterior use

All ROFLEX grommets can also be used in exterior applications, e.g. for external roof insulation.

In this case, it is important to use TESCON VANA (or TESCON INVIS) system adhesive tapes with water-resistant SOLID adhesive.

© 2024 Pro Clima New Zealand. All rights reserved. The trademarks in this document are registered to Pro Clima or one or more of its affiliates.

The information provided in this document is based on practical experience and current knowledge and was correct at the time of publication. Pro Clima reserves the right to change technical details as developments occur and improvements are made to our products.

Pro Clima recommends reviewing the latest technical data on the www.proclima.co.nz [https://www.proclima.co.nz] website to ensure the most current document version.

PRO CLIMA NEW ZEALAND

Upper North Island: 09 892 9900 [tel:006498929900]

Lower North Island: 04 589 8460 [tel:006445898460]

South Island: 03 327 4925 [tel:006433274925]

Technical: support@proclima.co.nz [mailto:support@proclima.co.nz]

General: welcome@proclima.co.nz [mailto:welcome@proclima.co.nz]

0800 PRO CLIMA (776 254) [tel:0064800776254]