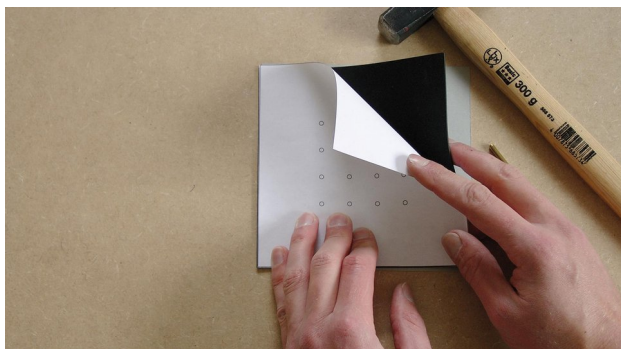


Installation instructions

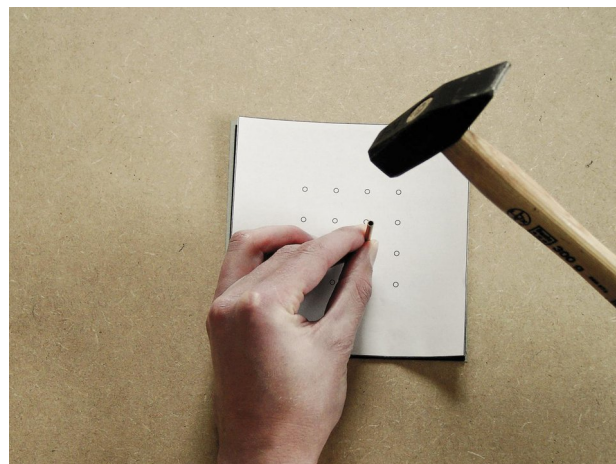
KAFLEX multi

Multi-cable grommet, for up to 16 cables



1. Align the underlay, EPDM and punchhole template

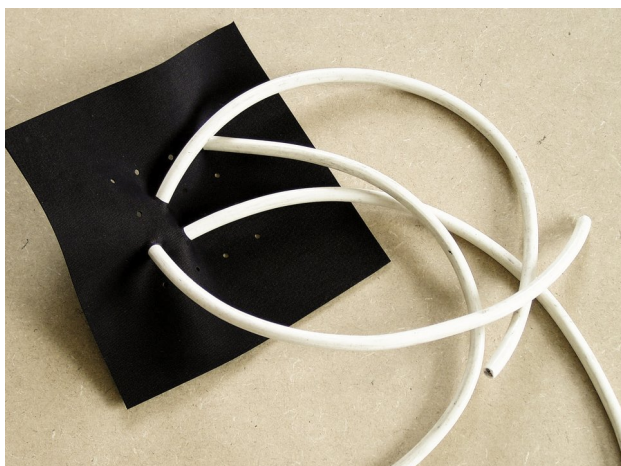
Place the EPDM grommet on a cardboard underlay, place the template for punchholes on top of it, and adjust the template to the correct position.



2. Punch out holes

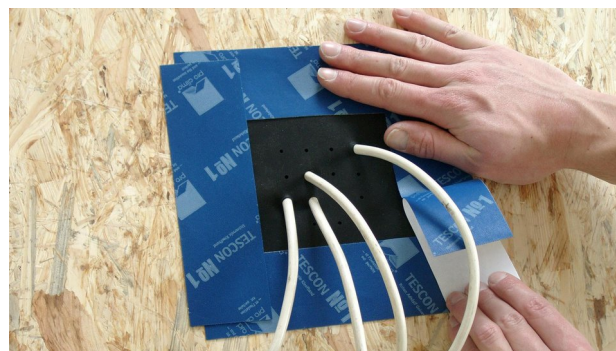
Punch out the required number of holes using the brass tube and hammer that are supplied.

Please note: Punching must be carried out on a subsurface that does not need to be protected against damage. The cardboard base does not provide sufficient protection for surfaces that are easily damaged.



3. Pull cables through

Pull cables with diameters of 4.8 - 12 mm through the holes that have been created in the EPDM grommet.



4. Stick the grommet

Press the grommet into place so that it rests flat on the subsurface to be sealed, clean the subsurface and then stick using TESCON VANA (or TESCON INVIS). Rub the tape firmly to secure the adhesive bond.

Use of the special ROFLEX 15-30 mm grommet for multiple conduits is recommended if a number of conduits are to be reliably integrated into the airtightness layer.

General conditions

IMPORTANT INFORMATION

- KAFLEX multi cable sealing grommet for up to 16 cables, Ø 4.8 - 12 mm
- Most suited to round power cables and data cables.

PRODUCT DESCRIPTION

KAFLEX multi is an EPDM cable sealing grommet. Its excellent workability creates secure, permanent, airtight seals where round cables penetrate membranes and smooth, non-mineral surfaces.

WEATHER EXPOSURE

This product is designed for use with external weather-resistive barriers (WRB) systems and internal air barrier systems. It will handle up to 180 days of direct exposure to UV and still fulfil the intended use for air and water control. Cladding systems should be detailed to prevent direct sunlight from reaching the TESCON® EXTORA flange in service.

APPLICATION NOTES

This product should be applied using the PRESSFIX tool to activate the pressure-sensitive adhesive and guarantee a long-term durable seal. The product is most suitable for circular cables, providing the best airtight seals. For flat cables, consider KAFLEX post, TESCON® EXTORA or TESCON® EXTORA PROFIL for optimum air & watertight seals.

© 2026 Pro Clima New Zealand. All rights reserved. The trademarks in this document are registered to Pro Clima or one or more of its affiliates.

The information provided in this document is based on practical experience and current knowledge and was correct at the time of publication. Pro Clima reserves the right to change technical details as developments occur and improvements are made to our products.

Pro Clima recommends reviewing the latest technical data on the www.proclima.co.nz website to ensure the most current document version.

PRO CLIMA NEW ZEALAND

Upper North Island: 09 892 9900

Lower North Island: 04 589 8460

South Island: 03 327 4925

Technical: support@proclima.co.nz

General: welcomer@proclima.co.nz

0800 PRO CLIMA (776 254)