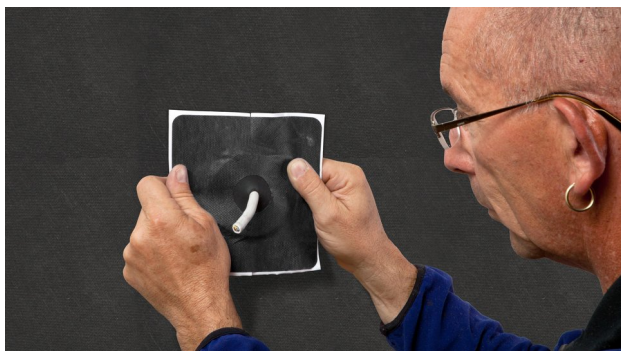


Installation instructions

KAFLEX duo

Grommets for 1 or 2 cables



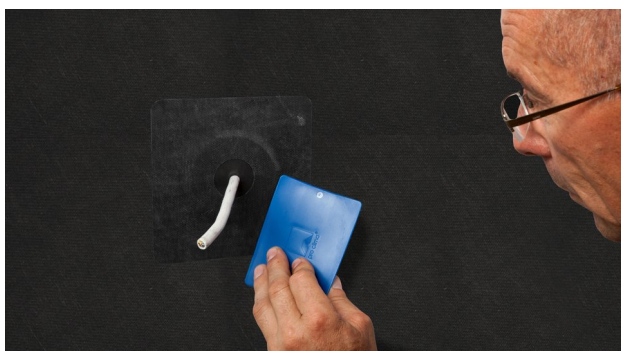
1. Pull the cable through and align

Pull the cable through the pre-punched hole in the EPDM, guide the grommet as far as the subsurface and align. Suitable for cables with a diameter of 4.8 - 12 mm.



2. Remove the release film

Gradually remove the release film.



3. Tape the grommet and rub firmly to secure the adhesive bond

Tape the grommet to the subsurface and rub the tape firmly to secure the adhesive bond. Ensure that there is sufficient resistance pressure. This work can be carried out more efficiently and in a manner that is kinder to your hands by using the PRESSFIX application tool.



Also available for 2 cables

KAFLEX is also pre-fabricated with two holes in the EPDM for quick and reliable penetrations with two cables of diameters of 4.8 - 12 mm.

General conditions

IMPORTANT INFORMATION

- KAFLEX mono sealing grommets for 1 cable, Ø 5 - 12 mm.
- KAFLEX duo sealing grommets for 2 cables, Ø 5 - 12 mm.
- Most suited to round power cables and data cables.

PRODUCT DESCRIPTION

KAFLEX mono/duo is a cable sealing grommet which forms a valuable part of an air barrier system. Made from EPDM with a factory bonded polypropylene flange with acrylate adhesive it has excellent workability and adhesion for secure and permanent airtight seals where round cables penetrate membranes.

WEATHER EXPOSURE

This product is designed for use with external weather-resistant barriers (WRB) systems and internal air barrier systems & will handle up to 180 days direct exposure to UV and still fulfil the intended use for air and water control. Cladding systems should be detailed to prevent direct sunlight onto the TESCON® EXTORA flange in service.

APPLICATION NOTES

This product should be applied using the PRESSFIX tool to activate the pressure sensitive adhesive and guarantee a long-term durable seal.

The product is most suitable for circular cables providing best airtight seals. For flat cables consider KAFLEX post, TESCON® EXTORA or TESCON® EXTORA PROFIL for optimum air & watertight seals.

© 2026 Pro Clima New Zealand. All rights reserved. The trademarks in this document are registered to Pro Clima or one or more of its affiliates.

The information provided in this document is based on practical experience and current knowledge and was correct at the time of publication. Pro Clima reserves the right to change technical details as developments occur and improvements are made to our products.

Pro Clima recommends reviewing the latest technical data on the www.proclima.co.nz website to ensure the most current document version.

PRO CLIMA NEW ZEALAND

Upper North Island: 09 892 9900

Lower North Island: 04 589 8460

South Island: 03 327 4925

Technical: support@proclima.co.nz

General: welcome@proclima.co.nz

0800 PRO CLIMA (776 254)