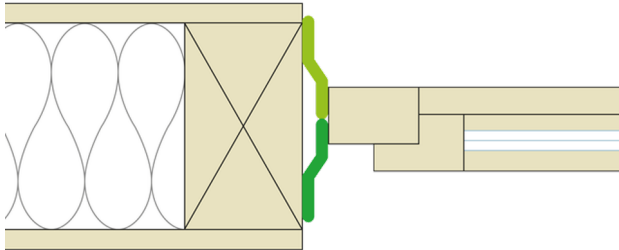


# Installation instructions



## Installation steps: 1. Timber frame construction, interior



### A single tape for interior and exterior joints

Sealing tape with an intelligent, humidity-variable functional film for joints between windows and doors and adjacent components on timber structures

- interior airtight joints to vapour control and airtightness layers in accordance with DIN 4108-7, SIA 180 and RE 2020
- windtight and resistant to driving rain on the outside

A specially optimised version of CONTEGA IQ is available for masonry structures.



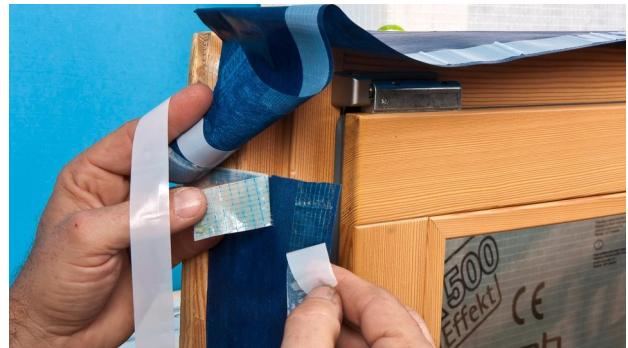
### 1. Stick the tape to the frame

Before the window is installed, stick CONTEGA IQ onto the side of the window frame with the non-printed side facing the reveal. Rub firmly using the pro clima PRESSFIX application tool to secure the adhesive bond.



### 2. Preparation of corners

To ensure that the tape can be applied simply and securely to the window reveal later on, create corner folds as shown here.



### 3. Stick the ends together

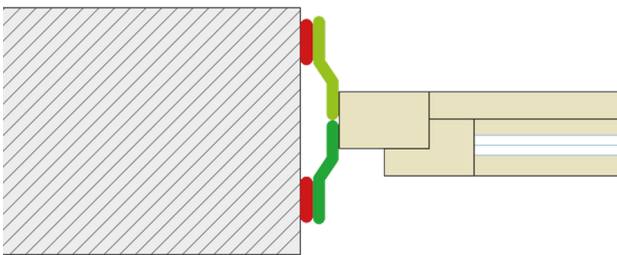
To ensure proper airtightness and/or wind sealing, stick the start and end of the CONTEGA IQ tape to each other using a strip of DUPLEX.



#### 4. Stick the tape in place all around the reveal

Install the window into the reveal, then remove the release film from CONTEGA IQ and stick the tape in place all around the reveal in an airtight and/or windtight manner. Rub firmly using the pro clima PRESSFIX application tool to secure the adhesive bond. Ensure that there is sufficient resistance pressure. Ensure that the corners created are airtight and/or windtight.

### Installation steps: 3. Masonry construction, interior



#### A single tape for interior and exterior joints

Sealing tape with an intelligent, humidity-variable functional film for joints between windows and doors and adjacent components on masonry structures

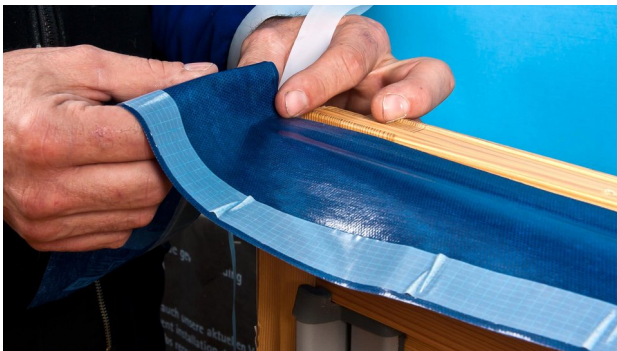
- airtight in accordance with DIN 4108-7, SIA 180 and RE 2020
- windtight and resistant to driving rain on the outside

A specially optimised version of CONTEGA IQ is available for timber structures.



#### 1. Stick the tape to the frame

Before the window is installed, stick CONTEGA IQ onto the side of the window frame with the non-printed side facing the reveal. Rub firmly using the pro clima PRESSFIX application tool to secure the adhesive bond. Ensure that there is sufficient resistance pressure.



#### 2. Preparation of corners

To ensure that the tape can be applied simply and securely to the window reveal later on, create corner folds as shown here.



#### 3. Stick the ends together

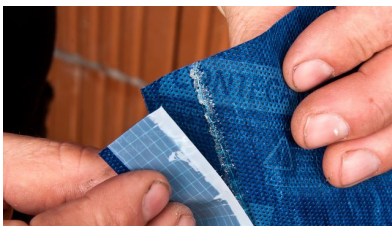
To ensure proper airtightness and/or wind sealing, stick the start and end of the CONTEGA IQ tape to each other using a strip of DUPLEX.



#### 4. Stick the tape in place all around the reveal

Install the window into the reveal, apply an approx. 5 mm thick line of ORCON F adhesive sealant all around the reveal in a tight zig-zag pattern, and then place the tape onto the adhesive in an airtight and/or windtight manner. Ensure that the corners created are airtight and/or windtight.

### Note



#### Expansion slack for increased reliability

The slack included for expansion automatically becomes active if there is relative motion between building components and provides increased protection against tearing. In this way, CONTEGA IQ provides optimal protection against leaks that could lead to mould and moisture damage to structures.

## General conditions

### IMPORTANT INFORMATION

- Thin, highly pliable and easily formed into corners and shapes
- Equipped with an expansion joint to accommodate building movement
- Outstanding adhesion in wet and cold conditions
- Fleece side can be plastered or rendered over

### PRODUCT DESCRIPTION

CONTEGA® IQ is a durable vapour-permeable adhesive strip to make effective connections of an interior air barrier assembly to penetrations such as windows and doors. It forms an essential part of a robust interior air barrier system. Made from polypropylene with acrylate adhesive.

### WEATHER EXPOSURE

This product is designed to be installed on building interiors, not in direct sunlight. CONTEGA® IQ should be detailed to prevent direct continued sunlight onto the product in service.

### APPLICATION NOTES

Before application, substrate should be brushed or wiped clean to provide effective adhesion. Surfaces should be even and smooth enough to provide a clean connection. Surfaces must be free of grease, silicone, and other water repellent substances. The product should be applied using the pro clima PRESSFIX tool to activate the pressure sensitive adhesive and ensure a long-term durable seal.

The bond must not be subjected to tensile strain over time. Any load borne by the product must be transferred to the substrate or other supporting materials as necessary.

© 2024 Pro Clima New Zealand. All rights reserved. The trademarks in this document are registered to Pro Clima or one or more of its affiliates.

The information provided in this document is based on practical experience and current knowledge and was correct at the time of publication. Pro Clima reserves the right to change technical details as developments occur and improvements are made to our products.

Pro Clima recommends reviewing the latest technical data on the [www.proclima.co.nz](https://www.proclima.co.nz) [<https://www.proclima.co.nz>] website to ensure the most current document version.

**PRO CLIMA NEW ZEALAND**

Upper North Island: 09 892 9900 [tel:006498929900]

Lower North Island: 04 589 8460 [tel:006445898460]

South Island: 03 327 4925 [tel:006433274925]

Technical: [support@proclima.co.nz](mailto:support@proclima.co.nz) [mailto:support@proclima.co.nz]

General: [welcome@proclima.co.nz](mailto:welcome@proclima.co.nz) [mailto:welcome@proclima.co.nz]

0800 PRO CLIMA (776 254) [tel:0064800776254]