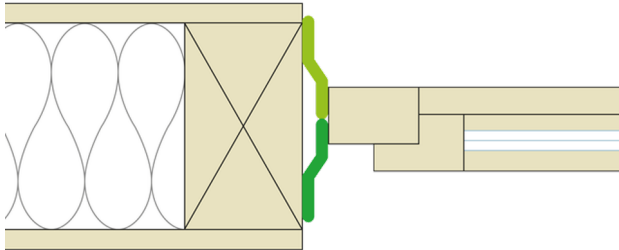


Installation instructions



Installation steps: 1. Timber frame construction, interior



A single tape for interior and exterior joints

Sealing tape with an intelligent, humidity-variable functional film for joints between windows and doors and adjacent components on timber structures

- interior airtight joints to vapour control and airtightness layers in accordance with DIN 4108-7, SIA 180 and RE 2020
- windtight and resistant to driving rain on the outside

A specially optimised version of CONTEGA IQ is available for masonry structures.



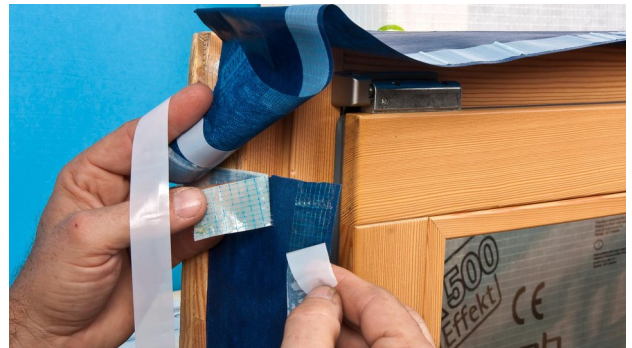
1. Stick the tape to the frame

Before the window is installed, stick CONTEGA IQ onto the side of the window frame with the non-printed side facing the reveal. Rub firmly using the pro clima PRESSFIX application tool to secure the adhesive bond.



2. Preparation of corners

To ensure that the tape can be applied simply and securely to the window reveal later on, create corner folds as shown here.



3. Stick the ends together

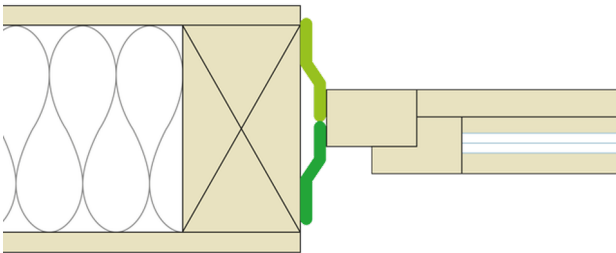
To ensure proper airtightness and/or wind sealing, stick the start and end of the CONTEGA IQ tape to each other using a strip of DUPLEX.



4. Stick the tape in place all around the reveal

Install the window into the reveal, then remove the release film from CONTEGA IQ and stick the tape in place all around the reveal in an airtight and/or windtight manner. Rub firmly using the pro clima PRESSFIX application tool to secure the adhesive bond. Ensure that there is sufficient resistance pressure. Ensure that the corners created are airtight and/or windtight.

Installation steps: 2. Timber frame construction, exterior



A single tape for interior and exterior joints

Sealing tape with an intelligent, humidity-variable functional film for joints between windows and doors and adjacent components on timber structures

- interior airtight joints to vapour control and airtightness layers in accordance with DIN 4108-7, SIA 180 and RE 2020
- windtight and resistant to driving rain on the outside

A specially optimised version of CONTEGA IQ is available for masonry structures.



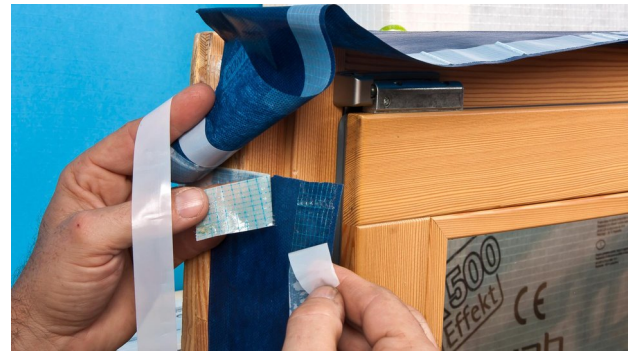
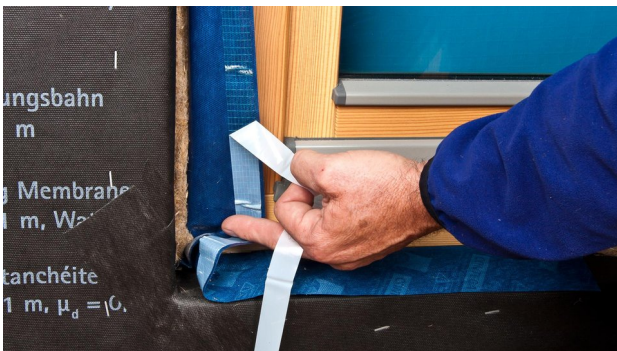
1. Stick the tape to the frame

Before the window is installed, stick CONTEGA IQ onto the side of the window frame with the non-printed side facing the reveal. Rub firmly using the pro clima PRESSFIX application tool to secure the adhesive bond. Ensure that there is sufficient resistance pressure.



2. Preparation of corners

To ensure that the tape can be applied simply and securely to the window reveal later on, create corner folds as shown here.



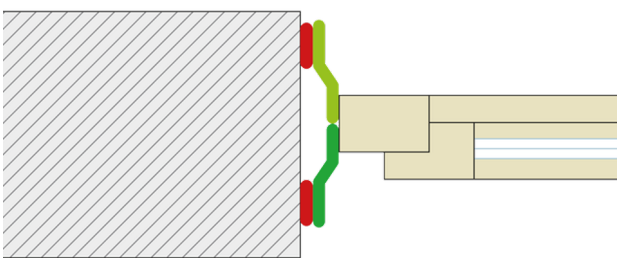
3. Stick the ends together

To ensure proper airtightness and/or wind sealing, stick the start and end of the CONTEGA IQ tape to each other using a strip of DUPLEX.

4. Stick the tape in place all around the reveal

Install the window into the reveal, then remove the release film from CONTEGA IQ and stick the tape in place all around the reveal in an airtight and/or windtight manner. Rub firmly using the pro clima PRESSFIX application tool to secure the adhesive bond. Ensure that there is sufficient resistance pressure. Ensure that the corners created are airtight and/or windtight.

Installation steps: 3. Masonry construction, interior



A single tape for interior and exterior joints

Sealing tape with an intelligent, humidity-variable functional film for joints between windows and doors and adjacent components on masonry structures

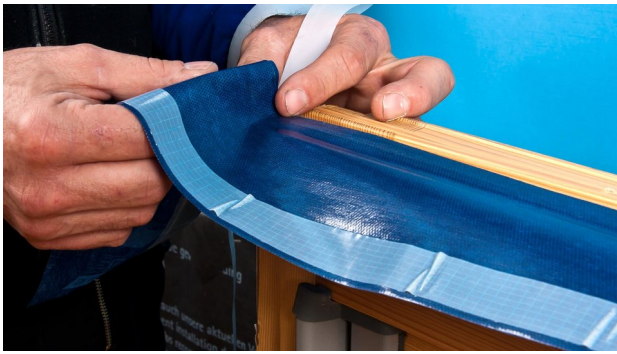
- airtight in accordance with DIN 4108-7, SIA 180 and RE 2020
- windtight and resistant to driving rain on the outside

A specially optimised version of CONTEGA IQ is available for timber structures.



1. Stick the tape to the frame

Before the window is installed, stick CONTEGA IQ onto the side of the window frame with the non-printed side facing the reveal. Rub firmly using the pro clima PRESSFIX application tool to secure the adhesive bond. Ensure that there is sufficient resistance pressure.



2. Preparation of corners

To ensure that the tape can be applied simply and securely to the window reveal later on, create corner folds as shown here.



3. Stick the ends together

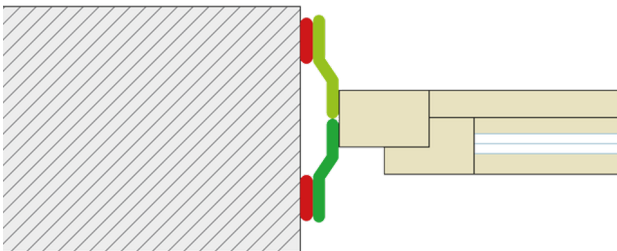
To ensure proper airtightness and/or wind sealing, stick the start and end of the CONTEGA IQ tape to each other using a strip of DUPLEX.



4. Stick the tape in place all around the reveal

Install the window into the reveal, apply an approx. 5 mm thick line of ORCON F adhesive sealant all around the reveal in a tight zig-zag pattern, and then place the tape onto the adhesive in an airtight and/or windtight manner. Ensure that the corners created are airtight and/or windtight.

Installation steps: 4. Masonry construction, exterior



A single tape for interior and exterior joints

Sealing tape with an intelligent, humidity-variable functional film for joints between windows and doors and adjacent components on masonry structures

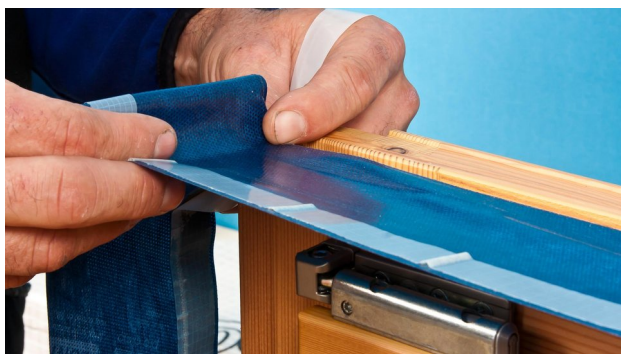
- airtight in accordance with DIN 4108-7, SIA 180 and RE 2020
- windtight and resistant to driving rain on the outside

A specially optimised version of CONTEGA IQ is available for timber structures.



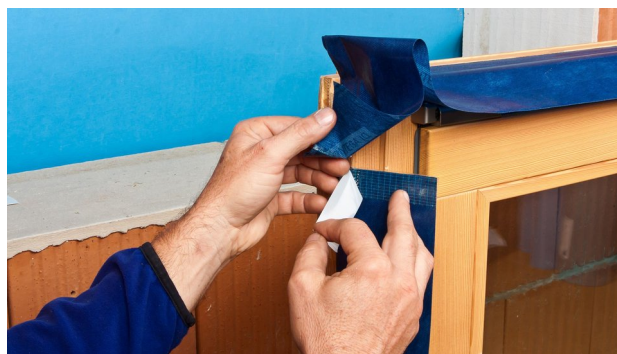
1. Stick the tape to the frame

Before the window is installed, stick CONTEGA IQ onto the side of the window frame with the non-printed side facing the reveal. Rub firmly using the pro clima PRESSFIX application tool to secure the adhesive bond. Ensure that there is sufficient resistance pressure.



2. Preparation of corners

To ensure that the tape can be applied simply and securely to the window reveal later on, create corner folds as shown here.



3. Stick the ends together

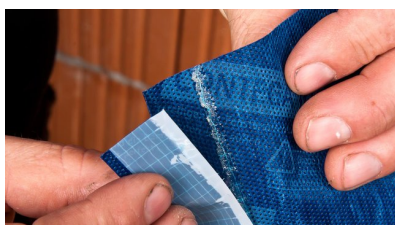
To ensure proper airtightness and/or wind sealing, stick the start and end of the CONTEGA IQ tape to each other using a strip of DUPLEX.



4. Stick the tape in place all around the reveal

Install the window into the reveal, apply an approx. 5 mm thick line of ORCON F adhesive sealant all around the reveal in a tight zig-zag pattern, and then place the tape onto the adhesive in an airtight and/or windtight manner. Ensure that the corners created are airtight and/or windtight.

Note



Expansion slack for increased reliability

The slack included for expansion automatically becomes active if there is relative motion between building structures and provides increased protection against tearing. In this way, CONTEGA IQ provides optimal protection against leaks that could lead to mould and moisture damage to structures.

Substrates

Clean subsurfaces before sticking. Adhesion to frozen surfaces is not possible. There must be no water-repellent substances (e.g. grease or silicone) on surfaces where adhesives are to be applied. The width of the adhesive tape that is to be plastered over should generally not exceed 60 mm (2 3/8") or 50% of the soffit area. Detailed recommendations can be obtained from the relevant plaster producer. Subsurfaces must be sufficiently dry and stable.

Permanent adhesion is achieved on all pro clima interior and exterior membranes, other vapour control and airtight membranes (e.g. those made of PE, PA, PP and aluminium) as well as other roof and breather (WRB) membranes (e.g. those made of PP and PET). Adhesion can be carried out on planed and painted wood, hard plastics, hard wood-based panels (chipboard, OSB and plywood panels). For sealing joints on masonry or concrete or on rough substrates, use ORCON F.

The best results in terms of structural stability are achieved on high-quality subsurfaces. It is your responsibility to check the suitability of the subsurface; adhesion tests may be necessary. Pre-treatment with TESCON PRIMER is recommended in the case of subsurfaces with insufficient stability.

General conditions

The bonds should not be subjected to tensile strain.

Rub the adhesive tapes firmly to secure the adhesive bonds. Ensure that there is sufficient resistance pressure. Windproof, airtight or rainproof sealing can only be achieved if this sealing tape is installed without folds, creases or joints. Ventilate continuously and systematically to prevent build-up of excessive humidity; use a dryer if necessary.

When plastering, please observe the recommendations of the plaster manufacturer for non-absorbent substrates. A bonding course may be necessary.

The information provided here is based on practical experience and the current state of knowledge. We reserve the right to make changes to the recommended designs and processing or to make alterations due to technical developments and associated improvements in the quality of our products. We would be happy to inform you of the current technical state of the art at the time you use our products.

Further information about installation and design details is available in the pro clima planning documentation. If you have any questions, please contact [pro clima Technical Support](<https://proclima.com/service/technical-support>).

MOLL

bauökologische Produkte GmbH

Rheintalstraße 35 - 43

D-68723 Schwetzingen

Fon: +49 (0) 62 02 - 27 82.0

eMail: info@proclima.de