



# Internal airtightness

**INSULATION BETWEEN RAFTERS**

**EXTERNAL ROOF INSULATION**

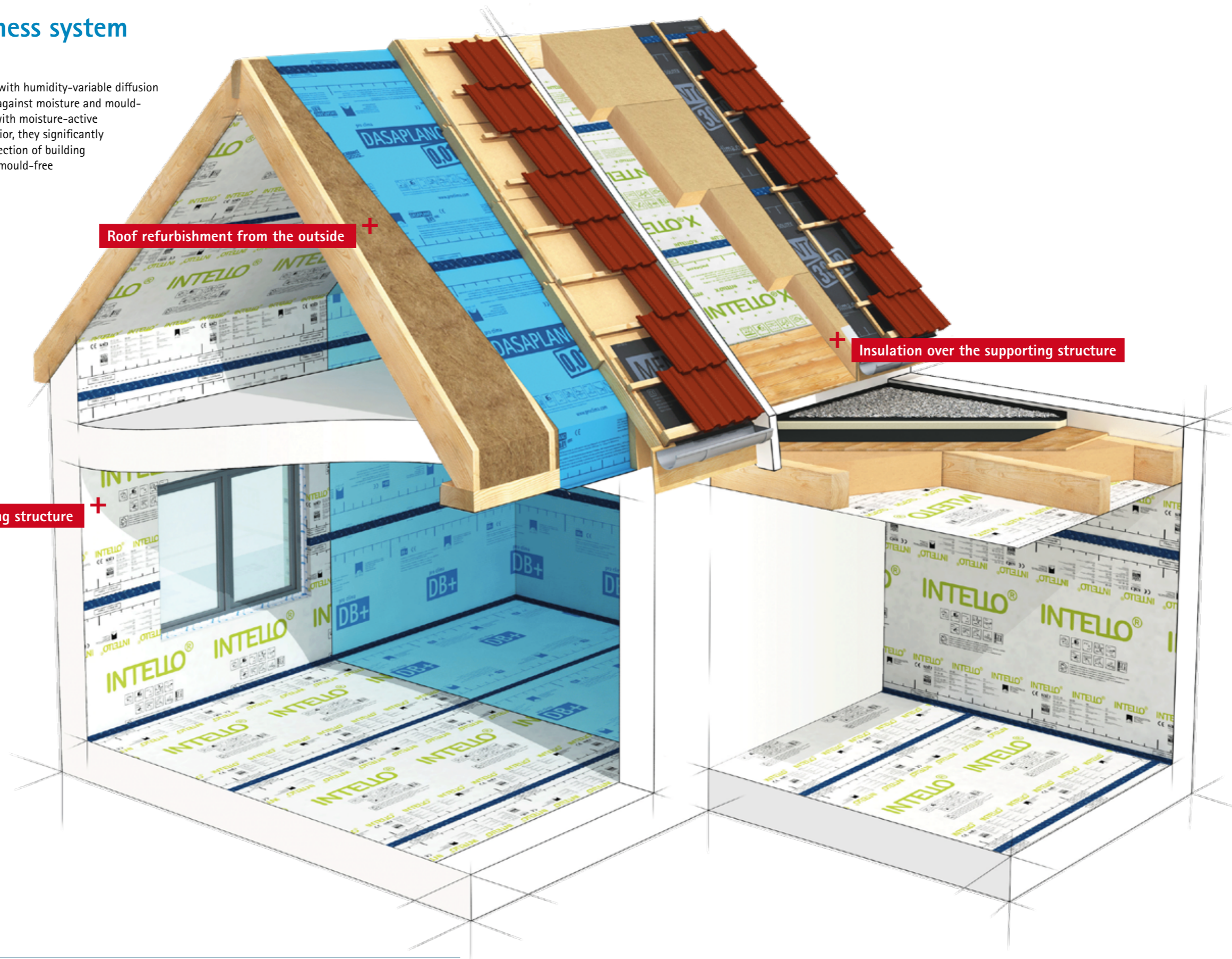
**ROOF REFURBISHMENT FROM THE OUTSIDE**



**Reliable solutions for sealing building envelopes**

## Internal airtightness system

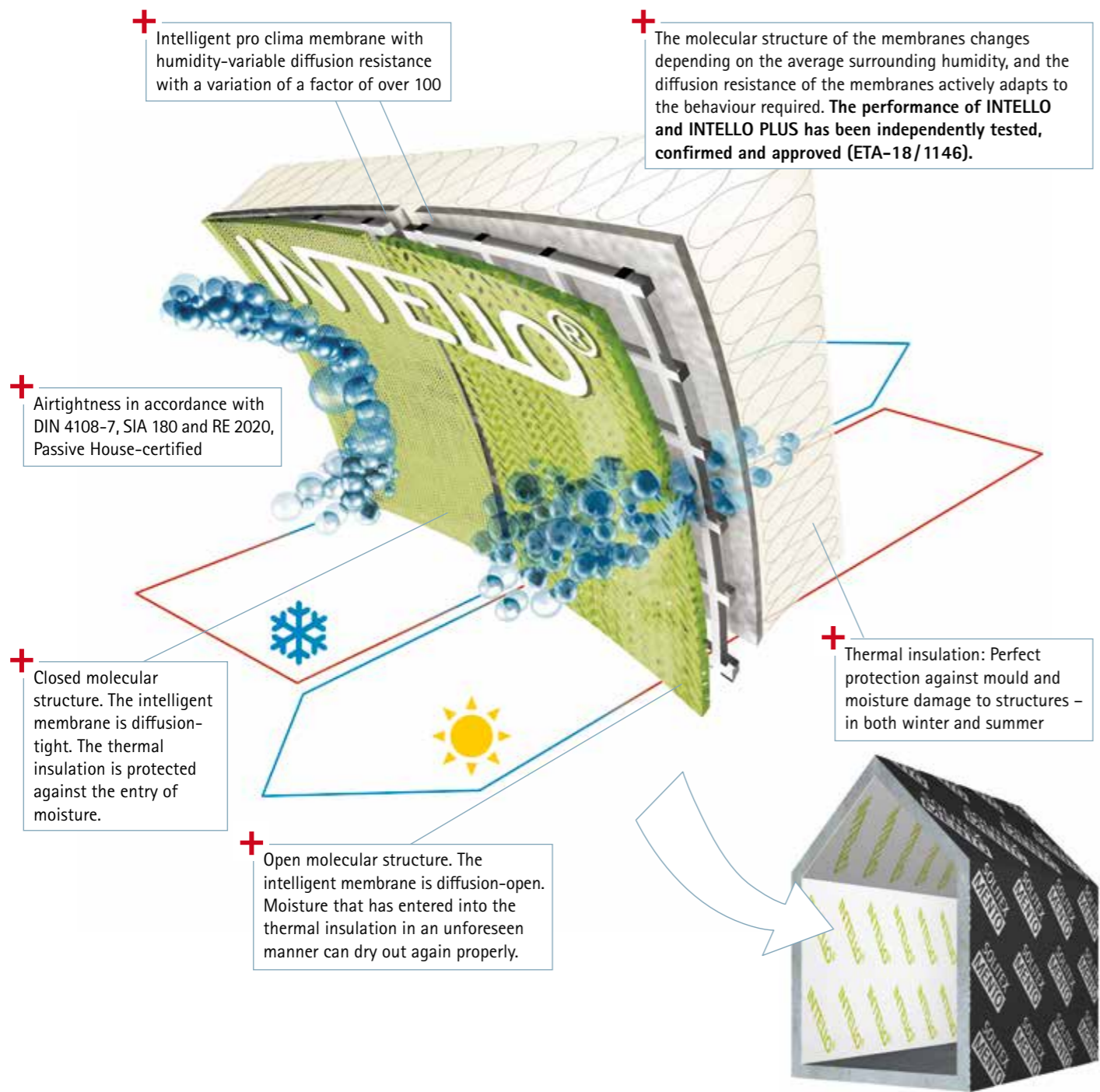
Vapour check and airtight membranes with humidity-variable diffusion resistance provide the best protection against moisture and mould-infested components. In combination with moisture-active windtightness membranes on the exterior, they significantly improve the energy efficiency and protection of building components and facilitate a healthier, mould-free indoor environment.



# 20 JAHRE INTELLO®

Simple · Reliable · Proven in service

Humidity-variable airtightness with INTELLO® and INTELLO® PLUS



## Maximum protection against mould and moisture damage to structures

**+** **Note**  
With intelligent membranes from pro clima, winter building sites are not a problem! With their high hydrosafe value, they keep building components dry – even if there is a lot of moisture arising from new building work in winter.

[proclima.info/en/winter-building-sites](http://proclima.info/en/winter-building-sites)



pro clima makes it possible!

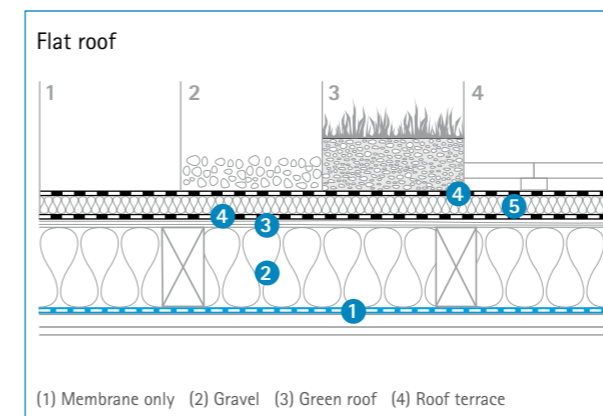
## Independently certified airtightness

pro clima INTELLO and INTELLO PLUS are the first humidity-variable airtightness membranes in the world with independent certification of their durability. This has also been confirmed again by a European Technical Assessment (ETA-18/1146) by the German Institute for Construction Technology (DIBt). This is further evidence of the high-quality performance of the humidity-variable behaviour, which provides reliable protection for building components over a period of at least 50 years. With this independent confirmation of the humidity-variable performance, project planners and installers can use INTELLO and INTELLO PLUS to implement reliably protected structures with humidity-variable vapour check membranes.



- ✓ Independently demonstrated durability thanks to ETA-18/1146
- ✓ Protection against moisture damage: reliable planning and implementation of building structures
- ✓ Roofs, walls, ceilings and floors
- ✓ Use class 0, without chemical wood preservation
- ✓ Reliable performance and quality

Humidity-variable airtightness membranes with independent ageing testing (ETA-18/1146) allow for reliable planning and implementation of building structures.



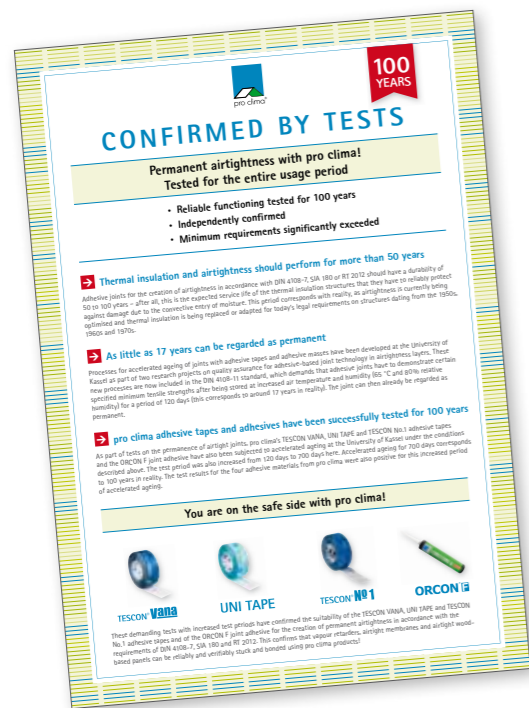
- Legend**
- 1 INTELLO / INTELLO PLUS airtightness membrane
  - 2 Fibrous insulation in framework
  - 3 Sheathing
  - 4 Roof sealing
  - 5 Suitable, rigid external roof insulation

## Adhesion for 100 years – Reliable adhesion that lasts as long as the building component itself!



The adhesive bonds created when implementing the interior airtightness and exterior windtightness layers must be reliable and durable. This applies both to the overlaps of membranes with one another and also to the joints between membranes and any penetrations or adjacent building components. Adhesion is important because these two sealing layers ensure that the thermal insulation structure will perform effectively and, at the same time, is protected against mould and moisture damage. And everything should of course continue to work properly in the long term – ideally for the entire service life of the building component, meaning at least 50 years. There is large variability in terms of the quality levels that can be found on the marketplace – unfortunately including some products that are barely fit for purpose.

But how can you identify a good adhesive tape? To provide even more reassurance in this regard, we have had the pro clima adhesive tapes TESCON VANA, TESCON No.1, UNI TAPE and the ORCON F joint adhesive tested independently by the University of Kassel in Germany. These four pro clima adhesive products are the only products that have demonstrated 100 years of adhesive performance in these tests. This is a unique achievement for all products worldwide. As a result, building structures are better protected in the long term.



**100 YEARS ADHESION**

- ✓ successfully tested
- ✓ unique worldwide

TESCON VANA · TESCON No.1 · UNI TAPE · ORCON F

[proclima.com/100years](http://proclima.com/100years)

### Reliable even in the presence of moisture

Vapour check or underlay membranes can easily become damp or even properly wet during installation. Rain or the formation of condensation on building component surfaces are unavoidable features of everyday reality on building sites. Anybody who doesn't wish to compromise in terms of the durability of adhesive bonds or the practicalities of installation procedures should opt for TESCON adhesive tapes. The water-resistant pro clima SOLID acrylate adhesive guarantees reliable adhesive bonds for both interior and exterior applications – even in damp or wet conditions.



### More information on this topic:

Reliable adhesion – How do adhesives work?  
[proclima.info/en/reliable-adhesion](http://proclima.info/en/reliable-adhesion)



## Reliability even in damp or wet conditions

The water-resistant SOLID adhesive ensures quick and permanent joints with the subsurface – for both interior and exterior applications. The joints created are immediately sealed and can be subjected to loading. This facilitates:

- Reliable airtightness even with increased humidity – as typically encountered during the construction phase as a result of plastering or the installation of screed
- Reliable windtightness on roofs and facades, even in rainy weather or wet conditions



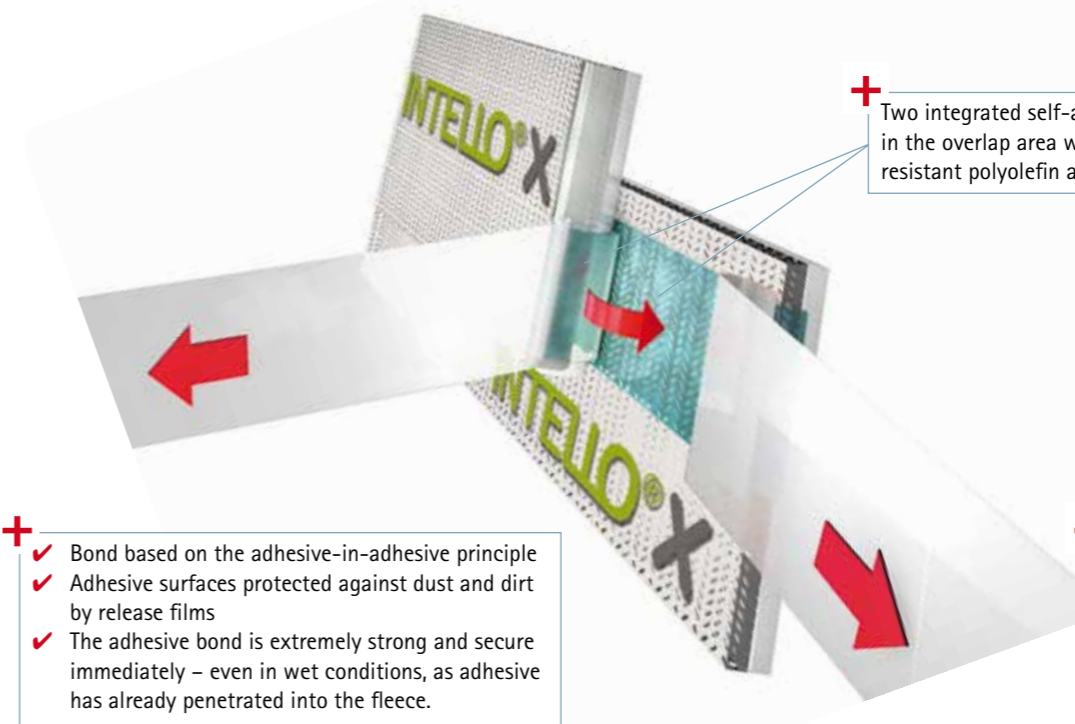
Water-resistant SOLID adhesive

[vimeo.com/503067958](https://vimeo.com/503067958)



TESCON VANA is being stuck to a piece of SOLITEX MENTO roofing underlay membrane under water here! When a mechanical load is applied as a test, the fleece layer of the underlay membrane tears internally ('failure of the substrate'). The adhesive bond itself is still intact.

## Quicker reliable sealing with pro clima connect technology



- ✓ Bond based on the adhesive-in-adhesive principle
- ✓ Adhesive surfaces protected against dust and dirt by release films
- ✓ The adhesive bond is extremely strong and secure immediately – even in wet conditions, as adhesive has already penetrated into the fleece.



pro clima connect technology is also available on

- External sealing systems for roofs and walls as part of the SOLITEX series
- The DA airtightness system for external roof insulation

[vimeo.com/503096028](https://vimeo.com/503096028)



## Insulation in the supporting structure, e.g. with the

### INTELLO® PLUS / INTELLO® system

Reinforced / hydrosafe® high-performance vapour check, suitable for all fibrous insulation mats and boards (INTELLO PLUS: including blown-in insulation)

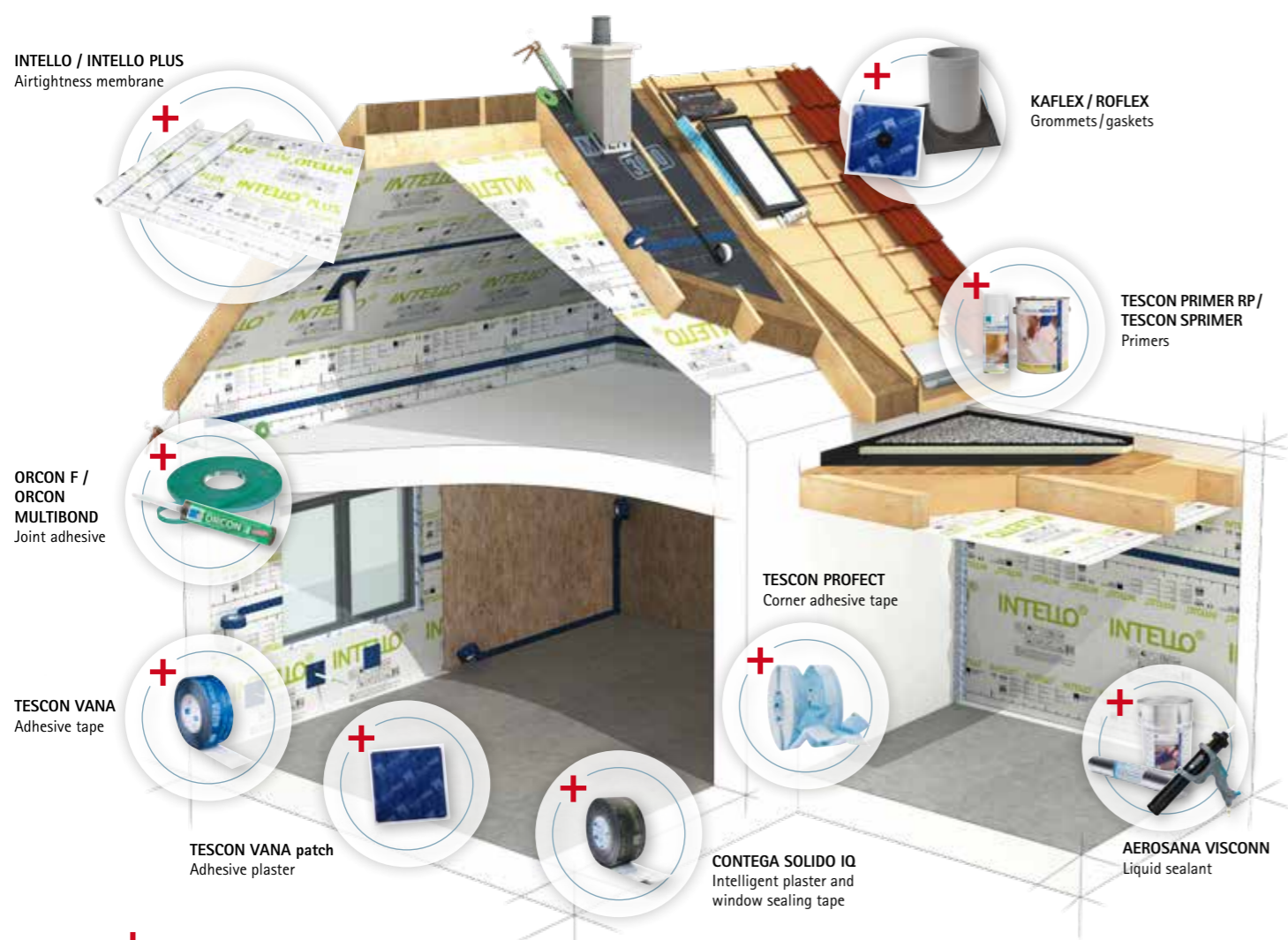
#### Areas of application:

For use on roofs, walls, ceilings and floors on structures that are open or closed to diffusion on the exterior, e.g. flat/steep roofs and green roofs, after appropriate design calculations have been carried out.



#### Advantages:

- ✓ Best possible protection against moisture damage to structures and mould because this product is humidity-variable with a variation of a factor of over 100
- ✓ INTELLO PLUS: Test winner in April 2012 with the German product-testing foundation 'Stiftung Warentest'
- ✓ Permanent protection: officially tested and certified performance (ETA-18/1146)
- ✓ Protected winter building sites thanks to hydrosafe® behaviour
- ✓ Can be combined with all fibrous insulation mats and boards (INTELLO PLUS: including blown-in insulation)



## Other membranes and further information on INTELLO/INTELLO PLUS

- Installation videos
- Detailed CAD drawings
- And much more:

[proclima.info/en/airtightness/framework-insulation](http://proclima.info/en/airtightness/framework-insulation)



**INTELLO**  
Hydrosafe® high-performance vapour check, suitable for all fibrous insulation mats and boards



Ideal with blown-in insulation material

**INTELLO PLUS**  
Reinforced hydrosafe® high-performance vapour check, suitable for all fibrous insulation materials



Ideal with blown-in insulation material

**INTELLO X PLUS**  
Reinforced all-round hydrosafe® high-performance vapour check



Ideal with blown-in insulation material

**DB+**  
Reinforced hydrosafe® vapour check made of building paper



#### Technical specs:

		INTELLO	INTELLO PLUS
Fleece		Polypropylene	Polypropylene
Membrane		Polyethylene copolymer	Polyethylene copolymer
Reinforcement		-	Polypropylene non-woven fabric
Surface weight	EN 1849-2	85 g/m <sup>2</sup> ; 0.28 oz/ft <sup>2</sup>	110 g/m <sup>2</sup> ; 0.36 oz/ft <sup>2</sup>
s <sub>d</sub> value / humidity variable	EN 1931 / EN ISO 12572	14 m / 0.25 - >25 m	14 m / 0.25 - >25 m
g value / humidity variable		70 MN-s/g / 1.25 - >125 MN-s/g	70 MN-s/g / 1.25 - >125 MN-s/g
Hydrosafe value (sd)	DIN 68800-2	2 m	2 m
Tensile strength MD/CD	*EN 12311-2/**EN 13859-1 (A)	110 N/5 cm / 80 N/5 cm ; 13 lb/in / 9 lb/in*	340 N/5 cm / 220 N/5 cm ; 39 lb/in / 25 lb/in
Temperature resistance		permanent -40 °C to 80 °C ; -40 °F to 176 °F	permanent -40 °C to 80 °C ; -40 °F to 176 °F

#### Supply forms:

Length: 20 m (65' 7"); 50 m (164'); width: 1.50 m (4' 11"), 3.00 m (9' 10")



European Technical Assessment  
ETA - 18 / 1146



## Insulation over the supporting structure, e.g. with the

### INTELLO® X PLUS / INTELLO® X system

Reinforced / hydrosafe® high-performance vapour check

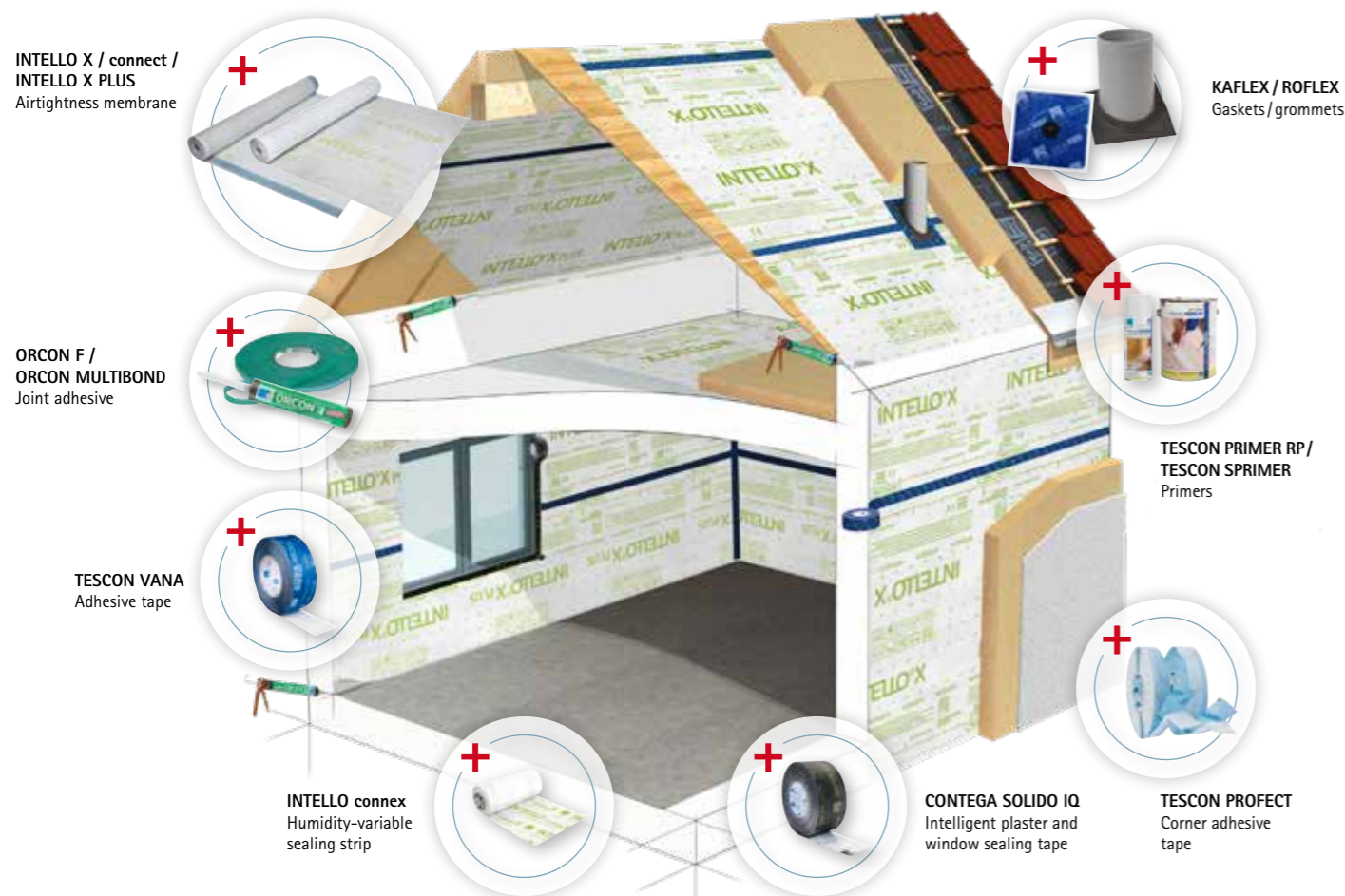
#### Areas of application:

Versatile range of applications: can be used directly on top of sheathing underneath over-rafter insulation, on the inside on between-rafter insulation and, in the case of refurbishment from the outside, between two mineral wool insulation layers. INTELLO X can also be used in areas where the membrane will be permanently exposed to diffuse UV light, such as areas without inner cladding. INTELLO X membranes can be used on structures that are diffusion-open to the outside or are diffusion-tight, e.g. flat/pitched roofs and green roofs, after appropriate design calculations have been carried out. The reinforced INTELLO X PLUS is ideal for the use of blown-in insulation materials.



#### Advantages:

- ✓ Excellent protection against mould and moisture damage to structures thanks to humidity-variable diffusion resistance
- ✓ Can be combined with all fibrous insulation mats and boards (INTELLO X PLUS: including blown-in insulation)
- ✓ Easier handling: can be used with insulation installed between rafters, with external insulation and – in the case of refurbishment from the outside – between two layers of insulation
- ✓ Protects building structures against weathering during the construction phase for roof pitches of 10° (2.1:12) and higher



#### Technical specs:

		INTELLO X	INTELLO X PLUS
Protective and covering fleece		Polypropylene	Polypropylene
Membrane		Polyethylene copolymer	Polyethylene copolymer
Reinforcement		–	Polypropylene non-woven fabric
Surface weight	EN 1849-2	150 g/m <sup>2</sup> ; 0.5 oz/ft <sup>2</sup>	170 g/m <sup>2</sup> ; 0.56 oz/ft <sup>2</sup>
s <sub>d</sub> value / humidity variable	EN 1931 / EN ISO 12572	14 m / 0.25 - >25 m	14 m / 0.25 - >25 m
g value / humidity variable		70 MN-s/g / 1.25 - >125 MN-s/g	70 MN-s/g / 1.25 - >125 MN-s/g
Outdoor exposure		2 months	2 months
Outdoor exposure for refurbishment betw. 2 insulation layers		14 days ; 7 days at ≤ 10 °C (≤ 50 °F)	14 days ; 7 days at ≤ 10 °C (≤ 50 °F)

#### Supply forms:

Length: 50 m (164'); width: 1.50 m (4' 11"); INTELLO X is also available with self-adhesive strips as INTELLO X connect.

## Other membranes and further information on INTELLO X/INTELLO X PLUS

- Installation videos
- Detailed CAD drawings
- And much more:

[proclima.info/en/airtightness/external-roof-insulation](http://proclima.info/en/airtightness/external-roof-insulation)

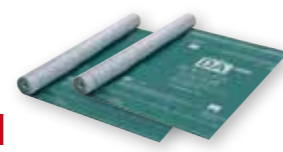


**INTELLO X**  
All-round hydrosafe® high-performance vapour check, INTELLO X connect with self-adhesive strips



**Ideal with blown-in insulation material**

**INTELLO X PLUS**  
Reinforced all-round hydrosafe® high-performance vapour check



**DA**  
Vapour check membrane for external insulation, DA connect with self-adhesive strips



INTELLO X

## Roof refurbishment from the outside, insulation covering with wood fibre

### DASAPLANO 0,01 connect system

Highly diffusion-open airtightness membrane

#### Areas of application:

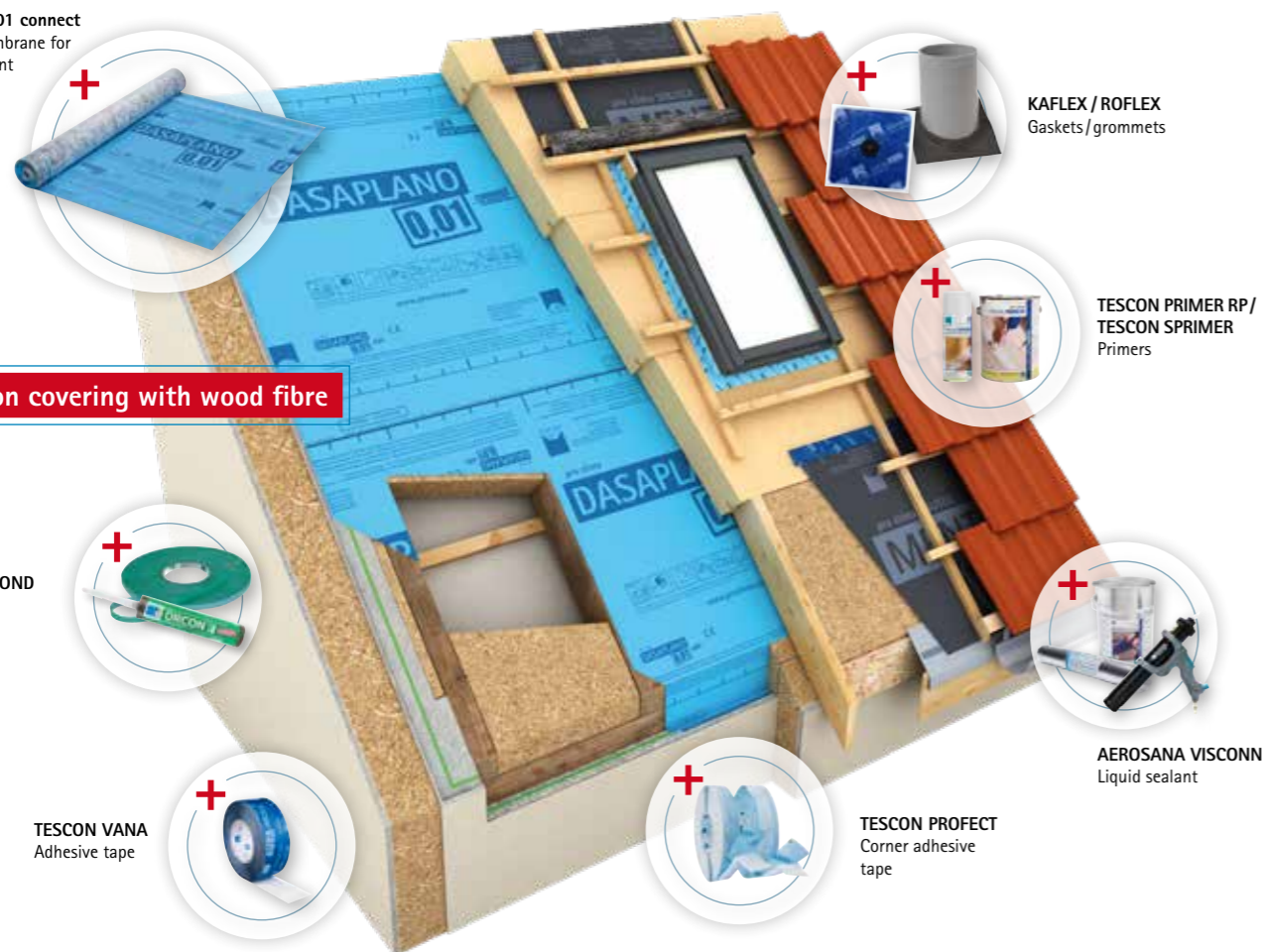
For use as an airtightness membrane that can be subjected to outdoor exposure for roof refurbishment from the outside in the case of full packing of the existing spaces between the rafters with insulation. Installation across the rafters, underneath an additional layer of over-rafter insulation consisting of wood-fibre underlay panels. Please contact Technical Support at pro clima in Germany for assistance with calculating the thickness of the external wood-fibre insulation that is required from a building physics viewpoint.



#### Advantages:

- ✓ Simple implementation of the airtight layer: installation across rafters and insulation
- ✓ Dry and reliably protected building components thanks to active moisture transport
- ✓ Protection during the construction phase: suitable as a temporary covering
- ✓ Quick and reliable bonding thanks to the integrated 'connect' self-adhesive strips on the long edges of the membrane
- ✓ Excellent values in hazardous substance testing, has been tested according to the ISO 16000 evaluation scheme

DASAPLANO 0,01 connect  
Airtightness membrane for  
roof refurbishment



Insulation covering with wood fibre

ORCON F /  
ORCON MULTIBOND  
Joint adhesive

TESCON VANA  
Adhesive tape

AEROSANA VISCONN  
Liquid sealant

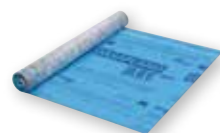
TESCON PROTECT  
Corner adhesive  
tape

KAFLEX / ROFLEX  
Gaskets / grommets

TESCON PRIMER RP /  
TESCON SPRIMER  
Primers

### Further information on DASAPLANO 0,01 connect

- Installation videos
- Detailed CAD drawings
- And much more:



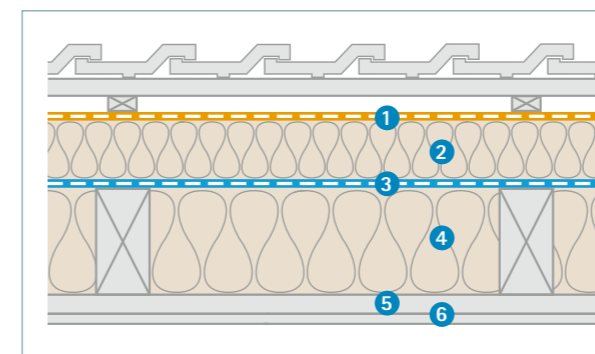
DASAPLANO 0,01 connect  
Airtightness membrane for roof  
refurbishment from the outside,  
with self-adhesive strips



[proclima.info/en/  
dasaplano-001](http://proclima.info/en/dasaplano-001)



#### Typical cross-section:



#### Refurbishment solution:

Between-rafter insulation consisting of fibrous insulation material. Insulation covering with wood-fibre underlay panels.

- 1 Optional roofing underlay, e.g. SOLITEX MENTO 3000
- 2 **Over-rafter insulation, wood-fibre underlay panel**
- 3 DASAPLANO 0,01 connect
- 4 **Insulation between rafters, fibrous**
- 5 Service cavity, if necessary
- 6 Inner cladding: gypsum plasterboard or plaster on lightweight wood-wool boards

The thickness of the external wood-fibre insulation needs to be calculated on a project-specific basis. Please contact Technical Support at pro clima in Germany for assistance.

#### Technical specs:

Protective and covering fleece		Polypropylene microfibre
Membrane		Monolithic polymer mixture
Surface weight	EN 1849-2	145 g/m <sup>2</sup> ; 0.48 oz/ft <sup>2</sup>
s <sub>d</sub> value, humidity variable	EN ISO 12572	0.01 m
Outdoor exposure		14 days ; 7 days at ≤ 10 °C (≤ 50 °F)
Tensile strength MD/CD	EN 12311-2	270 N/5 cm / 200 N/5 cm ; 31 lb/in / 23 lb/in
Temperature resistance		permanent -40 °C to 100 °C ; -40 °F to 212 °F

#### Supply forms:

Length: 50 m (164'); width: 1.50 m (4' 11")

## Roof refurbishment from the outside, insulation with mineral wool

### INTELLO<sup>®</sup> X PLUS / INTELLO<sup>®</sup> X system

Reinforced / All-round hydrosafe<sup>®</sup> high-performance vapour check

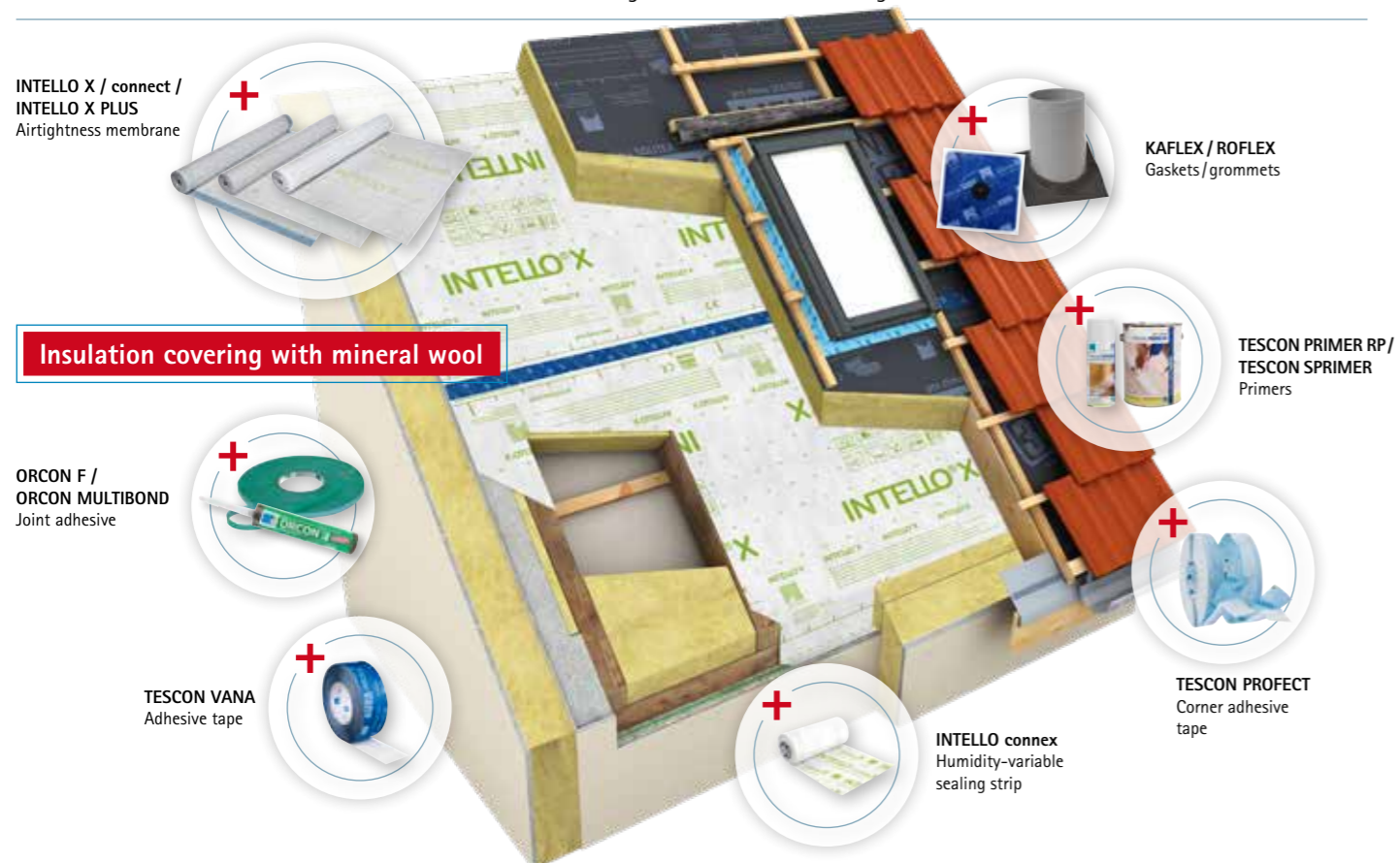
#### Areas of application:

For use as a refurbishment vapour check and airtightness membrane over the existing rafter roof structure between two layers of mineral wool insulation in combination with a diffusion-open roofing underlay (e.g. SOLITEX MENTO 3000). Please contact Technical Support at pro clima in Germany for assistance with calculating the thickness of the external mineral wool insulation that is required from a building physics viewpoint. The humidity-variable INTELLO X airtightness and vapour check membrane can also be used on the inside of insulation installed between rafters or wall framework with all fibrous insulation mats and boards, or directly on top of sheathing underneath exterior insulation with all fibrous insulation materials. In these cases, it can be used in combination with building component layers that are diffusion-open to the outside or are diffusion-tight, e.g. pitched, flat or green roofs, after appropriate design calculations have been carried out.

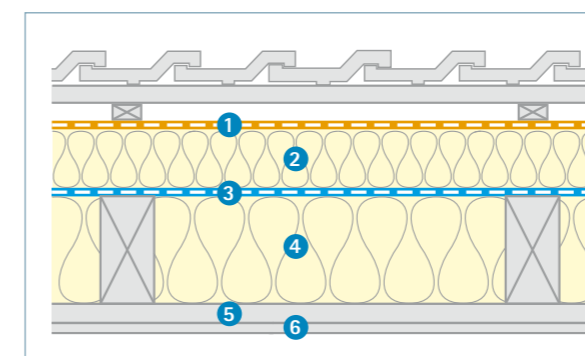


#### Advantages:

- ✓ Excellent protection against mould and moisture damage to structures thanks to humidity-variable diffusion resistance
- ✓ Easier handling: can be used with insulation installed between rafters/framework, with external insulation and – in the case of refurbishment from the outside – between two layers of mineral wool insulation
- ✓ Protects building structures against weathering during the construction phase for roof pitches of 10° (2.1:12) and higher
- ✓ Protected winter building sites thanks to hydrosafe<sup>®</sup> behaviour
- ✓ Excellent values in hazardous substance testing, has been tested according to the ISO 16000 evaluation scheme



#### Typical cross-section:



#### Refurbishment solution:

Between-rafter and over-rafter insulation both mineral wool.

- 1 Roofing underlay membrane e.g. pro clima SOLITEX MENTO 3000
- 2 **Over-rafter insulation, mineral wool**
- 3 INTELLO X / connect / INTELLO X PLUS
- 4 **Insulation between rafters/framework, mineral wool**
- 5 Service cavity, if necessary
- 6 Inner cladding

The thickness of the external mineral wool insulation needs to be calculated on a project-specific basis. Please contact Technical Support at pro clima in Germany for assistance.

#### Technical specs:

		INTELLO X	INTELLO X PLUS
Protective and covering fleece		Polypropylene	Polypropylene
Membrane		Polyethylene copolymer	Polyethylene copolymer
Reinforcement		–	Polypropylene non-woven fabric
Surface weight	EN 1849-2	150 g/m <sup>2</sup> ; 0.5 oz/ft <sup>2</sup>	170 g/m <sup>2</sup> ; 0.56 oz/ft <sup>2</sup>
s <sub>d</sub> value / humidity variable	EN 1931 / EN ISO 12572	14 m / 0.25 - >25 m	14 m / 0.25 - >25 m
g value / humidity variable		70 MN-s/g / 1.25 - >125 MN-s/g	70 MN-s/g / 1.25 - >125 MN-s/g
Outdoor exposure		2 months	2 months
Outdoor exposure for refurbishment betw. 2 insulation layers		14 days ; 7 days at ≤ 10 °C (≤ 50 °F)	14 days ; 7 days at ≤ 10 °C (≤ 50 °F)

#### Supply forms:

Length: 50 m (164'); width: 1.50 m (4' 11"); INTELLO X is also available with self-adhesive strips as INTELLO X connect.

## Further information on INTELLO X/connect and INTELLO X PLUS

- Installation videos
- Detailed CAD drawings
- And much more:

[proclima.info/en/intello-x-connect](http://proclima.info/en/intello-x-connect)



INTELLO X / INTELLO X connect  
All-round hydrosafe<sup>®</sup> high-performance vapour check, INTELLO X connect with self-adhesive strips



INTELLO X PLUS  
Reinforced all-round hydrosafe<sup>®</sup> high-performance vapour check





## Roof refurbishment from the outside, insulation covering with foam insulation

### DA connect system

Vapour check membrane for external roof insulation and roof refurbishment from the outside

#### Areas of application:

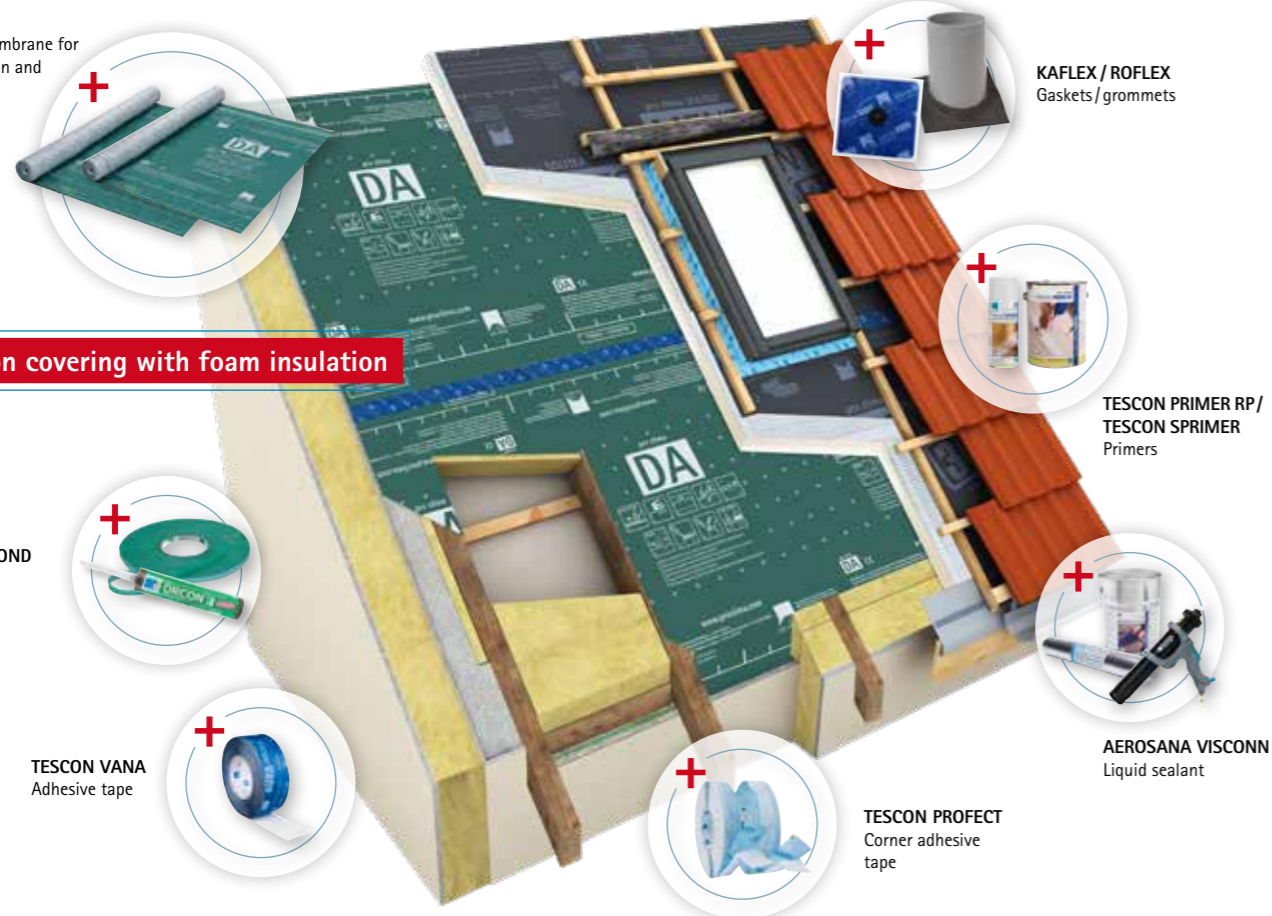
For use as an airtightness membrane and refurbishment vapour check between two layers of insulation. All fibrous insulation materials can be used for the insulation installed between rafters; the external roof insulation must be a foam insulation material (e.g. PUR or PIR). Please contact Technical Support at pro clima in Germany for assistance with calculating the thickness of the external foam insulation that is required from a building physics viewpoint. If necessary, the outer sealing layer should be implemented using a diffusion-open roofing underlay membrane (e.g. SOLITEX MENTO 3000). DA can also be used as a vapour check and airtightness membrane directly on top of roof sheathing underneath suitable external roof insulation made of all insulation materials on structures that are open to diffusion on the exterior (roofing underlay with SOLITEX MENTO 3000, for example).



#### Advantages:

- ✓ Protects building structures against weathering during the construction phase for roof pitches of 10° (2.1:12) and higher
- ✓ Water-resistant and waterproof, can be walked on
- ✓ Acts as a vapour check and airtight layer simultaneously
- ✓ Excellent values in hazardous substance testing, has been tested according to the ISO 16000 evaluation scheme

DA connect  
Vapour check membrane for  
external insulation and  
refurbishment



KAFLEX / ROFLEX  
Gaskets / grommets

TESCON PRIMER RP /  
TESCON SPRIMER  
Primers

AEROSANA VISCONN  
Liquid sealant

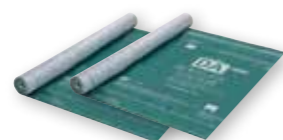
TESCON PROTECT  
Corner adhesive  
tape

ORCON F /  
ORCON MULTIBOND  
Joint adhesive

TESCON VANA  
Adhesive tape

### Further information on DA/DA connect

- Installation videos
- Detailed CAD drawings
- And much more:



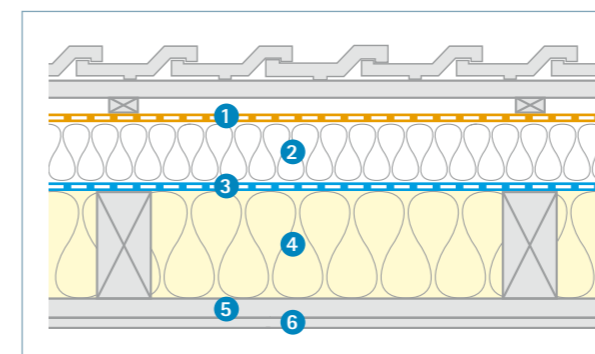
DA/DA connect  
Vapour check membrane for external  
insulation and roof refurbishment



[proclima.info/en/  
da-connect](http://proclima.info/en/da-connect)



#### Typical cross-section:



**Insulation covering with foam insulation (e.g. PUR, PIR, EPS):**  
Between-rafter insulation consisting of fibrous insulation material. Insulation covering with foam insulation (e.g. PUR or PIR).

- 1 Roofing underlay membrane, e.g. pro clima SOLITEX MENTO 3000
- 2 External roof insulation, e.g. PUR or PIR
- 3 DA/DA connect
- 4 Insulation between rafters/framework, fibrous
- 5 Service cavity, if necessary
- 6 Inner cladding

The thickness of the external foam insulation needs to be calculated on a project-specific basis. Please contact Technical Support at pro clima in Germany for assistance.

#### Technical specs:

Protective and covering fleece		Polypropylene
Membrane		Polypropylene
Surface weight	EN 1849-2	130 g/m <sup>2</sup> ; 0.43 oz/ft <sup>2</sup>
s <sub>p</sub> value	EN 1931	2.30 m
g value		11.5 MN·s/g
Outdoor exposure		3 months
Outdoor exposure for refurbishment betw. 2 insulation layers		14 days ; 7 days at ≤ 10 °C (≤ 50 °F)

#### Supply forms:

Length: 50 m (164'); width: 1.50 m (4' 11"); available with or without self-adhesive strips.

## Roof refurbishment from the outside, 'sub-and-top' also possible without insulation covering

### DASATOP® system

Refurbishment vapour check for 'sub-and-top' installation from the outside

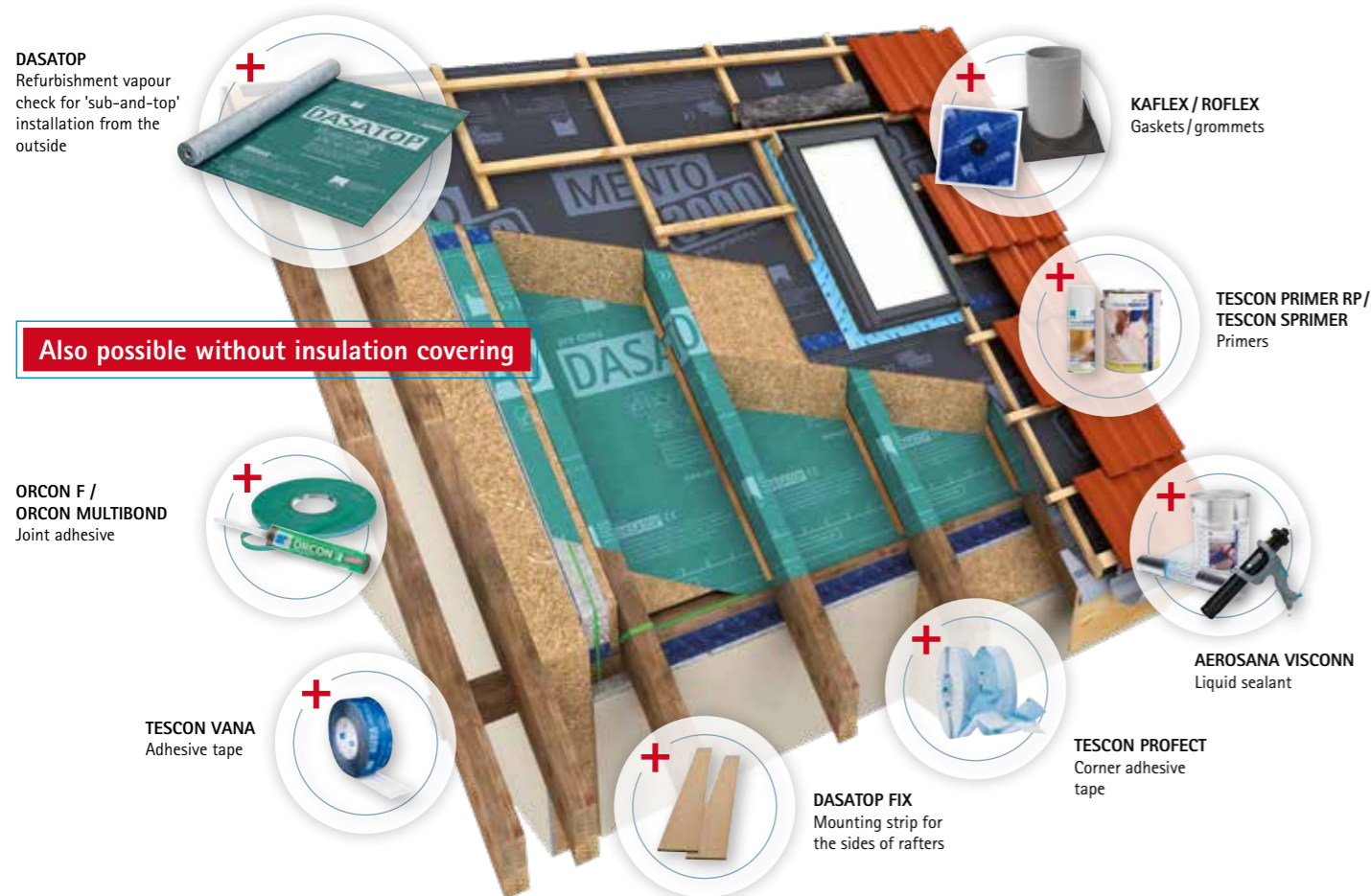
#### Areas of application:

Suitable as a 'sub-and-top' vapour check and airtightness membrane for all structures with diffusion-open roofing underlay membranes (e.g. pro clima SOLITEX). Also suitable in combination with wood-fibre underlay panels and MDF panels, and with fleece-laminated foam insulation materials (PUR, PIR, EPS etc.) with a thickness of 50 mm (2") and greater.



#### Advantages:

- ✓ Best possible reliability thanks to 'sub-and-top' installation
- ✓ Protects building components: humidity-variable sd value allows for installation into the spaces between rafters and over the tops of the rafters
- ✓ Time-saving installation: no adhesion to rafters required
- ✓ No insulation cover necessary
- ✓ Easy to work with: particularly robust thanks to fleece reinforcement
- ✓ Excellent values in hazardous substance testing, has been tested according to the ISO 16000 evaluation scheme



### Further information on DASATOP

- Installation videos
- Detailed CAD drawings
- And much more:



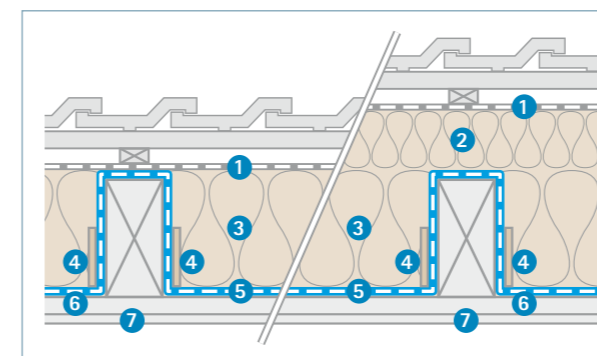
DASATOP  
Refurbishment vapour check for  
'sub-and-top' installation from the outside



[proclima.info/en/dasatop](http://proclima.info/en/dasatop)



#### Typical cross-section:



#### 'Sub-and-top' solution with/without insulation covering:

- 1 Roofing underlay membrane, e.g. pro clima SOLITEX MENTO 3000
- 2 Optional: wood-fibre underlay panel, MDF panel, mineral-fibre external roof insulation of any thickness, or PUR / PIR / EPS fleece-laminated of at least 50 mm
- 3 **Insulation between rafters/framework, fibrous**
- 4 Secured with DASATOP FIX strips
- 5 DASATOP
- 6 Service cavity, if necessary
- 7 Inner cladding

#### Technical specs:

Protective and covering fleece		Polypropylene
Membrane		Polyethylene copolymer
Surface weight	EN 1849-2	90 g/m <sup>2</sup> ; 0,29 oz/ft <sup>2</sup>
s <sub>d</sub> value / humidity variable	EN 1931 / EN ISO 12572	1.60 m / 0.05 - 2 m
g value / humidity variable	EN 1931 / EN ISO 12572	8 MN-s/g / 0.25 - 10 MN-s/g
Outdoor exposure		4 weeks
Tensile strength MD/CD	EN 12311-2	195 N/5 cm / 105 N/5 cm ; 22 lb/in / 12 lb/in
Temperature resistance		permanent -40 °C to 80 °C ; -40 °F to 176 °F

#### Supply forms:

Length: 50 m (164'); width: 1.50 m (4' 11"), 3.00 m (9' 10")

## Liquid sealants

### AEROSANA VISCONN

Sprayable airtightness sealant with humidity-variable water vapour permeability, blue/black

#### Areas of application:

For use as a humidity-variable vapour check and airtight layer that can be applied as a spray or using a brush on wall, ceiling and floor surfaces, such as non-plastered masonry or porous panel-form materials – both indoors and outdoors. Also suitable for building component joints and for strengthening subsurfaces on renovation projects.



#### Advantages:

- ✓ Time-saving and can be applied in versatile ways: spraying with an airless sprayer or AEROFIXX (compressed air), paint on.
- ✓ Reliable structures thanks to excellent adhesive properties on all standard construction surfaces
- ✓ Covers cracks and joints of up to 3 mm (1/8") width. Larger joints can also be covered in combination with AEROSANA FLEECE.
- ✓ For robust building components: permanent elasticity and high durability once it has dried
- ✓ Improves surfaces: forms a bonding course between subsurfaces and subsequent coatings
- ✓ Can be plastered / painted over, pro clima adhesive tapes can be stuck onto it
- ✓ Flexible use in indoor and protected outdoor areas thanks to its humidity-variable  $s_d$  value
- ✓ Excellent values in hazardous substance testing, has been tested according to the ISO 16000 evaluation scheme

#### Many possible applications:



Airtight spraying over angle brackets,



... joints at double collar ties that are difficult to access,



... joints between wood-based panels,



... window joints,



... unplastered walls, and



... for challenging refurbishment situations.



## Other liquid sealants and further information on AEROSANA VISCONN

- Installation videos
- Detailed CAD drawings
- And much more:

[proclima.info/en/liquid-seals](http://proclima.info/en/liquid-seals)



**AEROSANA VISCONN**  
Sprayable airtightness sealant with humidity-variable water vapour permeability, blue/black



**AEROSANA VISCONN white**  
Sprayable airtightness sealant with humidity-variable water vapour permeability, white



**AEROSANA VISCONN FIBRE**  
Fibre-reinforced sealant with humidity-variable water vapour permeability, blue/black



**AEROSANA VISCONN FIBRE white**  
Fibre-reinforced sealant with humidity-variable water vapour permeability, white



**AEROSANA FLEECE**  
Fleece for covering cracks or joints



**AEROFIXX**  
Application gun for AEROSANA system foil cartridges



#### Technical specs:

Component		Modified aqueous acrylate polymer dispersion
Colour		dark blue, when fully dry dark blue/black
Surface weight	EN 1849-2	290 g/m <sup>2</sup> ; 0.95 oz/ft <sup>2</sup> (dried, at 0.3 mm ; 13 mil thickness)
Coating application		0.2 - 1.0 mm ; 8 - 39 mil - wet film
$s_d$ value / humidity variable	EN 1931 / EN ISO 12572	6 m (at 0.3 mm ; 13 mil thickness) / 0.13 - 10.00 m
g value / humidity variable	EN 1931 / EN ISO 12572	30 MN·s/g (at 0.3 mm ; 13 mil thickness) / 0.65 - 50 MN·s/g
Fire rating	DIN EN 13501-1	E
Outdoor exposure		3 months
Resistance to driving rain	ift, MO-01/1:2007-01, Abs. 5	up to 600 Pa, around window
Watertightness to liquid water	EN 1928	W1
Water column	EN ISO 811	2 000 mm ; 6' 7"
Airtightness	ift, MO-01/1:2007-01, Abs. 5	up to 1000 Pa, around window
Can be plastered / painted over		yes, and pro clima adhesive tapes can be stuck onto it
Durability after artificial ageing		passed
Application temperature		+5 °C to +60 °C; 40 °F to 140 °F (also applies to subsurface temperature)
Drying		approx. 12 - 48 hours (at 20 °C, 65% rel. humidity) depending on subsurface and applied thickness
Temperature resistance		permanent -40 °C to +90 °C ; -40 °F to +194 °F (dried)
Coverage		~ 1.33 m <sup>2</sup> /l ; 0.42 ft <sup>2</sup> /US fl oz (= 0.75 l/m <sup>2</sup> ; 2.36 US fl oz/ft <sup>2</sup> ), depending on subsurface and application method
Storage		5 °C to 25 °C ; 41 °F to 77 °F, closed in an airtight manner



## Support and advice on technical issues



Quick answers relating to building physics, construction, systems or products. Our engineers from the field of Timber and General Construction can help you quickly and simply in an expert manner and help you find solutions for cost-effective, reliable constructions that will create healthy living environments.

**Phone: +49 (0) 62 02 – 27 82 45**  
**E-mail: [support@proclima.com](mailto:support@proclima.com)**  
**[proclima.info/en/technical-support](http://proclima.info/en/technical-support)**

## Technical support



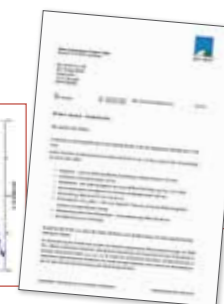
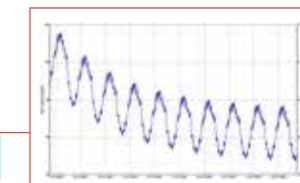
- ✓ Quick answers to your questions relating to building physics
- ✓ Engineers from pro clima's Application Technology department can help you with their specialist knowledge
- ✓ Evaluation of structures and designs
- ✓ Advice on applications and use of systems and products
- ✓ Evaluation and approval of structures and components

## Component tests and building physics assessments

Feel free to contact us with your questions on the moisture-related evaluation of components. We can check and evaluate your building components – including flat-roof structures with complex building physics behaviour – and provide reassurance in terms of your liability as an advisor.

- ✓ Quick, free-of-charge evaluation of the moisture-related behaviour of components
- ✓ Greater reassurance and reduced liability for your advice services
- ✓ Testing and evaluation with building physics software from the Fraunhofer Institute for Building Physics
- ✓ Walls, floors/ceilings, pitched roofs
- ✓ Also for structures with complex building physics behaviour, e.g. flat roofs

Contact us at: [support@proclima.com](mailto:support@proclima.com)



## Suppliers and distributors around the world

pro clima is a pioneer in intelligent airtightness. We are active all around the world, supplying complete sealing systems for interior and exterior use – with intelligent membranes, solutions for connections, and a full range of associated services.

Head office:

**pro clima – MOLL bauökologische Produkte GmbH**

Rheintalstraße 35–43 · 68723 Schwetzingen · Germany

Phone: +49 (0) 62 02 – 27 82 0

info@proclima.com

proclima.com



### Australia

pro clima Australia Pty Ltd  
Level 3, 15 – 21 Doody St.  
Alexandria, Sydney, NSW 2015  
☎ +61 2 9160 8300  
welcome@proclima.com.au  
www.proclima.com.au

### Austria

Vinzenz Harrer GmbH  
Badl 31, 8130 Frohnleiten  
☎ +43 3127 2094 5  
☎ +43 3127 2094 5218  
office@harrer.at  
www.harrer.at

### Belgium

ISOPROC  
Boterstraat 23a  
2811 Mechelen (Hombeek)  
☎ +32 15 62 39 35  
info@isoproc.be  
www.isoproc.be  
be-nl.proclima.com  
be-fr.proclima.com

### Bulgaria

For a list of stockists  
please contact:  
worldwide-support@  
proclima.com  
www.proclima.com

### Canada

475 High Performance  
Building Supply  
1425 Marine Drive, Suite #207  
West Vancouver, BC  
V7T 1B9, Canada  
☎ +1 800 – 995 63 29  
info@475.supply  
ca.475.supply

### Chile

For a list of stockists  
please contact:  
worldwide-support@  
proclima.com  
www.proclima.com

### Czech Republic

CIUR a.s.  
Pražská 1012  
250 01 Brandýs nad Labem  
Czech Republic  
☎ +420 326 901 411  
☎ +420 326 901 456  
info@ciur.cz  
www.ciur.cz  
www.pro-clima.cz

### Denmark

BetaPack a/s  
Agerskovvej 9  
8362 Hørning  
☎ +45 70 20 87 00  
js@betapack.dk  
www.betapack.dk

### Estonia

Tervemaja OÜ  
Tähe 135A  
50107 Tartu  
☎ +372 740 55 09  
☎ +372 56 509 709  
tervemaja@tervemaja.ee  
www.tervemaja.ee

### Finland

Tiivistalo / Redi-Yhtiöt Oy  
Yrittäjätie 24  
01800 KLAUKKALA  
☎ +358 (0)207 439 670  
info@tiivistalo.fi  
www.tiivistalo.fi

### France

pro clima France SARL  
3 quai Jacques Sturm  
67000 Strasbourg  
☎ +33 1 86 37 00 70  
info@proclima.info  
www.proclima.info

### Great Britain

Ecological Buildings Systems  
Cardewlees, Carlisle  
Cumbria, CA5 6LF, UK  
☎ +44 1228 711 511  
☎ +44 1228 712 280  
info@ecological  
buildingsystems.com  
www.ecologicalbuilding  
systems.com

### Greece

Aerismos.gr  
Lysiou 11, Ilioupoli, 16346  
☎ +30 210 9714722  
info@aerismos.gr  
www.aerismos.gr

### Iceland

Redder ehf byggingalausnir  
Hyrjarhofda 2  
110 Reykjavik / Iceland  
☎ +35 45 58 08 88  
redder@redder.is  
www.redder.is

### Ireland & Northern Ireland

Ecological Building Systems  
Main Street, Athboy  
County Meath  
C15 Y678  
Republic of Ireland  
☎ +353 46 94 32 104  
info@ecological  
buildingsystems.com  
www.ecologicalbuilding  
systems.com

### Italy

Naturalia-Bau srl  
Via Carlo Abarth Str. 20  
39012 Meran / Merano (BZ)  
☎ +39 0473 499 050  
☎ +39 0473 499 060  
info@naturalia-bau.it  
www.naturalia-bau.it

### Japan

EcoTransfer Japan K.K.  
Imas Office Bakurocho Bldg. 6F  
1-5-6 Nihonbashi Bakurocho  
Chuo-ku, Tokyo 103-0002  
☎ +81 50 34 95 – 25 80  
☎ +81 50 34 58 – 06 37  
info@ecotransfer-japan.com  
www.ecotransfer-japan.com

### Kazakhstan

50 Pascal (T00 Greenbuild)  
Zenkova Str. 22, 124  
050000 Almaty  
Kazakhstan  
☎ +7 705 962 3463  
info@50pascal.ru  
www.50pascal.ru

### Latvia

Artiva Ltd  
Sila iela 9 Riga, LV-1057  
Office: Katlakalna iela 1,  
Riga, LV-1073  
☎ +371 29 25 28 82  
☎ +371 29 11 61 16  
info@artiva.lv  
www.artiva.lv  
www.proclima.lv

### Lithuania

Ekologiški statybos  
produktai UAB  
»ProClima« Atstovas Lietuvoje  
Parašykite: info@proclima.lt  
www.proclima.lt

### Luxembourg

MOLL bauökologische  
Produkte GmbH  
Rheintalstraße 35–43  
D-68723 Schwetzingen  
Germany  
☎ +49 6202 2782 0  
France  
☎ +33 1 86 37 00 70

### Mexico

For a list of stockists  
please contact:  
worldwide-support@  
proclima.com  
www.proclima.com

### Netherlands

A list of stockists is  
available at:  
nl.proclima.com/service/  
handelaren

### New Zealand

Pro Clima NZ Ltd  
Level 1, 47 The Esplanade  
Petone, Lower Hutt 5012  
☎ +64 4 589 8460  
welcome@proclima.co.nz  
www.proclima.co.nz

### Norway

For a list of stockists  
please contact:  
worldwide-support@  
proclima.com  
www.proclima.com

### Poland

For a list of stockists  
please contact:  
worldwide-support@  
proclima.com  
www.proclima.com

### Portugal

EUROBUILD  
Zona Industrial de Febres, Lote  
14  
3060-318 Febres  
☎ +351 231 027 943  
info@eurobuild.pt  
www.eurobuild.pt

### Romania

nZEBshop - Magazin pentru  
case inteligente  
Strada Icoanei 15,  
Sector 2, București  
România  
☎ +40 734 999 444  
info@nzebshop.ro  
www.nzebshop.ro

### Russia

For a list of stockists  
please contact:  
worldwide-support@  
proclima.com  
www.proclima.com

### Slovakia

VUNO HREUS, s.r.o.  
Kvačalová 1207/47  
010 04 Žilina  
Slovak Republic  
☎ +421 41 56 26 799  
vuno@vuno.sk  
www.vuno.sk  
www.proclima.sk

### Slovenia

Vinzenz Harrer GmbH  
Badl 31  
A-8130 Frohnleiten  
☎ +43 (0) 31 27 – 20 945  
☎ +43 (0) 31 27 – 20 945 218  
office@harrer.at  
www.harrer.at

### South Korea

Proclima Korea  
Suyang-ri 474-3  
Gonjam-eup / Gwangju-si  
529-851 GYEONGGI-DO  
☎ +82 (0) 31 – 797 5473  
☎ +82 (0) 31 – 797 5472  
info@proclima.co.kr  
www.proclima.co.kr

### Spain

Sistemas Pasivos Materiales Activos S.L.  
c/Eduardo Dato-42-1º  
E-01005 Vitoria-Gasteiz  
☎ +34 945 15 71 58  
proclima@sistemaspasivos.es  
www.sistemaspasivos.es

### Sweden

For a list of stockists  
please contact:  
worldwide-support@  
proclima.com  
www.proclima.com

### Switzerland

pro clima schweiz GmbH  
Teichgässlein 9  
4058 Basel  
info@proclima.ch  
www.proclima.ch

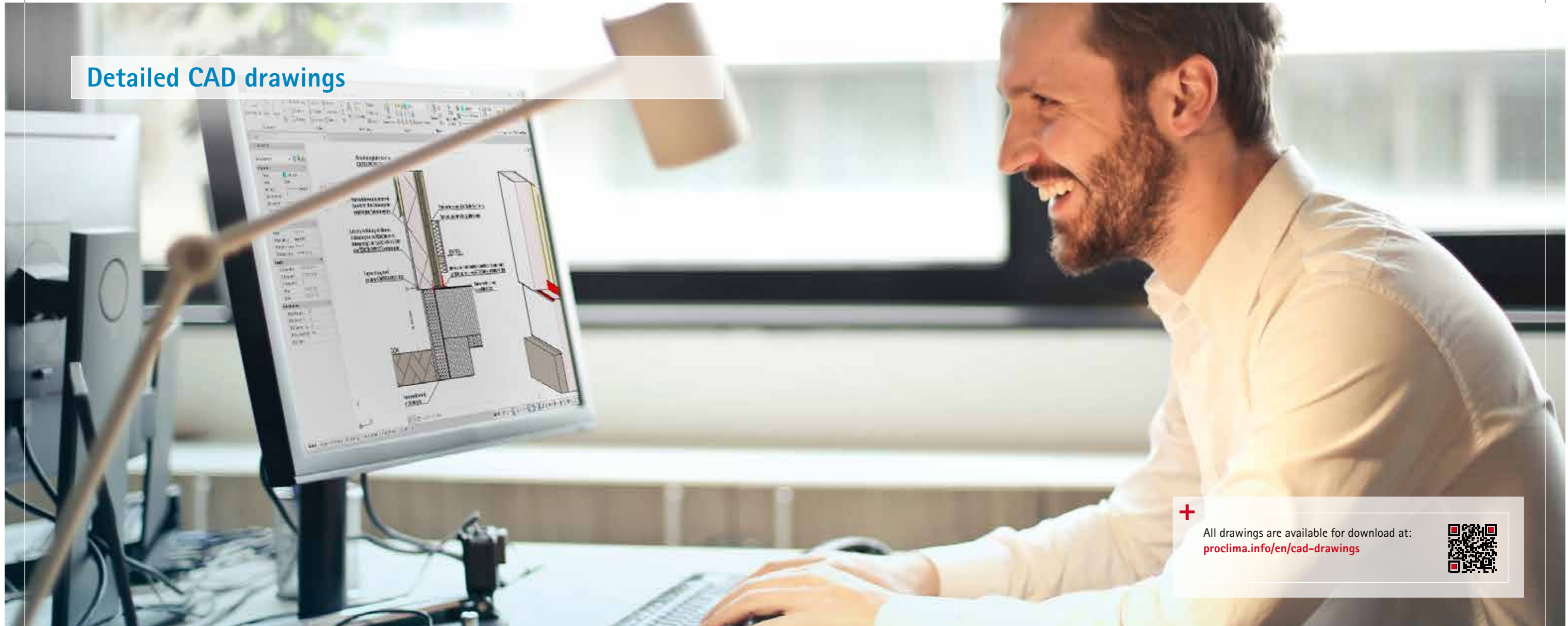
### Turkey

For a list of stockists  
please contact:  
worldwide-support@  
proclima.com  
www.proclima.com

### USA

475 High Performance  
Building Supply  
334 Douglass Street  
Brooklyn, NY 11217  
☎ +1 800 – 995 63 29  
info@475.supply  
www.475.supply

## Detailed CAD drawings

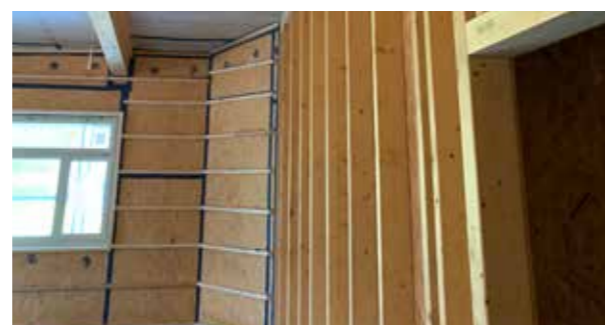
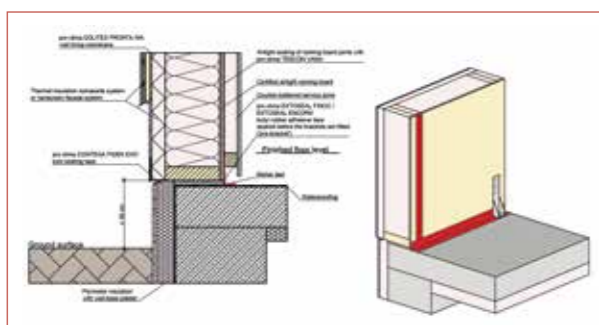


All drawings are available for download at:  
[proclima.info/en/cad-drawings](https://proclima.info/en/cad-drawings)

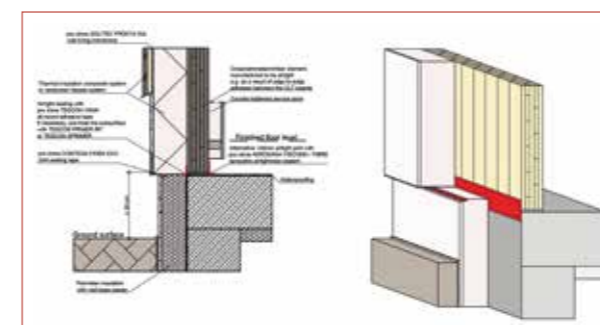


The pro clima database of CAD detail features provides you with a range of suggested solutions for planning and implementing your construction projects. Drawings showing how to achieve airtightness and windtightness at detail features are available to be downloaded for free in the form of DWG files, DXF files or PDF files. The drawings are grouped by construction type (timber frame and solid timber construction) and by the type of details – for example: base joints, component transitions, pitched roofs, flat roofs, windows and penetrations. A number of variants are available for many of the construction situations.

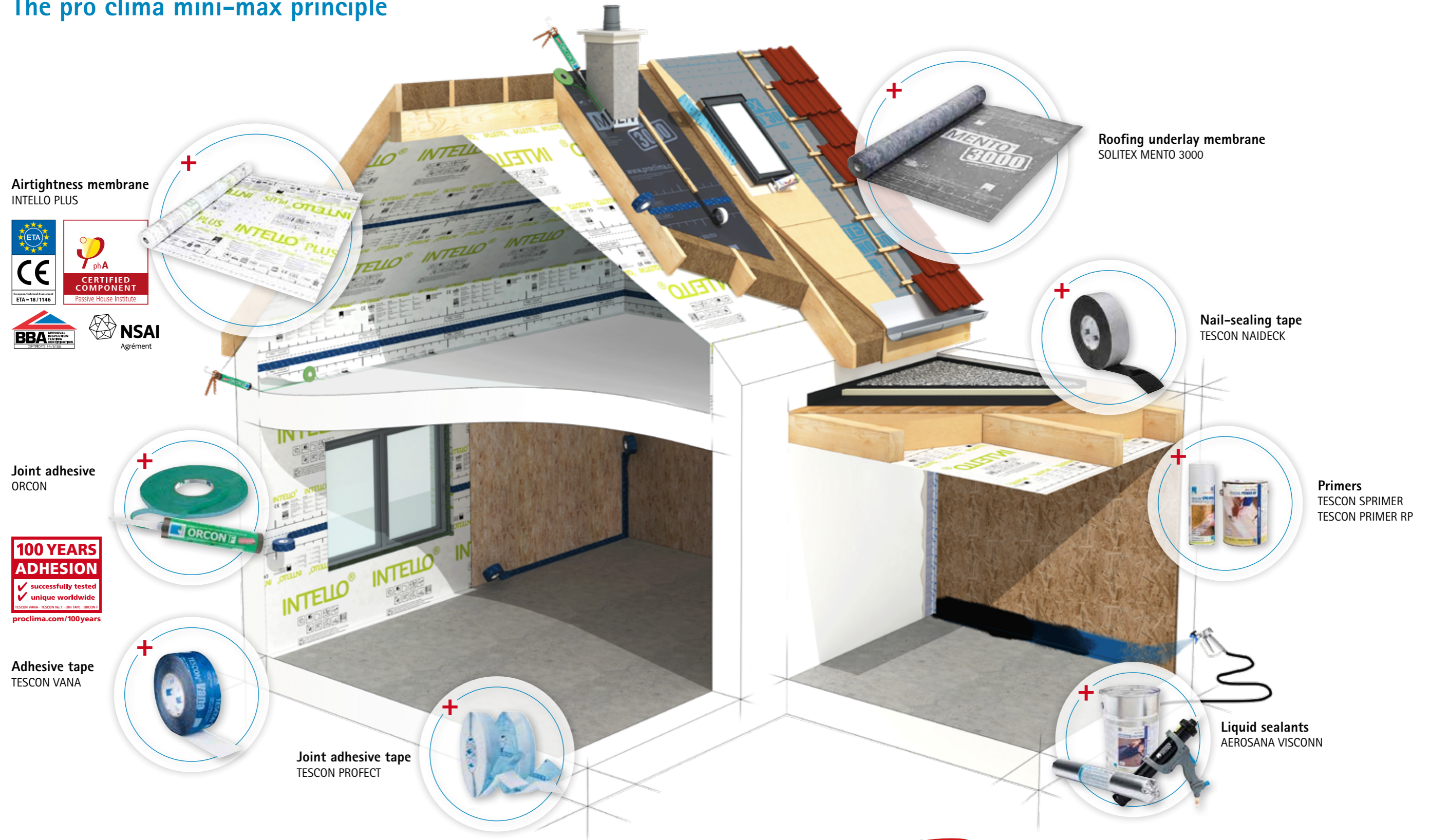
### Timber Frame Construction detail features



### Solid Timber Construction detail features



## The pro clima mini-max principle



### Maximum versatility with our core system products

The pro clima core system consists of just these few products. With these products, you will have a reliable solution available to you for almost all your construction needs. And if you have to contend with special requirements, you can always make use of pro clima's full range.

pro clima  
**10 year-  
system-warranty**  
comprehensive · transparent · fair  
[proclima.com/service/system-warranty](http://proclima.com/service/system-warranty)



## You can depend on us – pro clima warranty

You can count on the quality, durability and reliability of the pro clima system. In the unlikely event of problems, we will support you with our comprehensive, transparent and fair warranty:

- +
  - ✓ Comprehensive support if damage should occur
  - ✓ Warranty period within the pro clima system is twice as long as the statutory requirement
  - ✓ Including removal, disposal, replacement materials and new installation

We provide the following warranties for the pro clima airtightness system and for individual pro clima construction products in combination with all approved thermal insulation materials and for the SOLITEX system for pitched roofs external walls:



### 10-year warranty

... if products are installed solely in combination with pro clima standard products, insofar as products are available within the pro clima system for the relevant application.

### 6-year warranty

... if the products are installed in combination with products from third parties.

### + The benefits for you:

- ✓ Exact coordination of products with one another and with the relevant subsurfaces.
- ✓ Selection of bonding products is easy within the pro clima range.
- ✓ 95% of pro clima products are installed on the building site within three months of being supplied by traders.
- ✓ Warranty claims arising from purchase contracts for construction materials and building components generally expire after five years.
- ✓ pro clima offers a system warranty of up to 10 years, which means you can really depend on us!



The complete scope of this warranty can be found here:  
[proclima.com/products/system-warranty](https://proclima.com/products/system-warranty)



### CAMPUS RO, Rosenheim, Germany

211 apartments in hybrid timber frame construction

Construction period: July 2020 to January 2022

Architects: ACMS - Architektur-Centor  
Müller Schlüter

Interior design: brüderl GmbH, in cooperation with  
the designer Nils Holger Moormann

Temporary protection: SOLITEX ADHERO 3000  
TESCON VANA

pro clima Project Gallery: our products in  
construction practice:

[proclima.info/en/project-gallery](https://proclima.info/en/project-gallery)

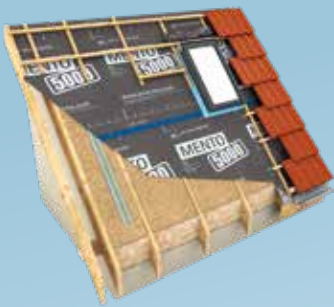




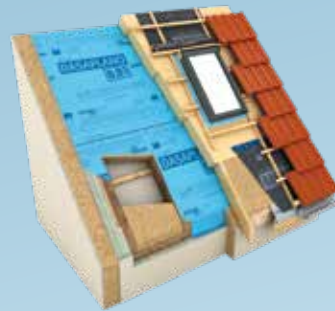
MOLL bauökologische Produkte GmbH  
Rheintalstraße 35-43 · 68723 Schwetzingen · Germany  
Phone: +49 6202 2782 0 · E-mail: [info@proclima.com](mailto:info@proclima.com) · [proclima.com](http://proclima.com)



## Reliable system solutions for sealing building envelopes



**Moisture-activated wind-sealing**  
Highly diffusion-open, moisture-activated roofing underlay and breather membranes with pore-free TEEE membrane layers. The best quality for reliable structures that are free of mould and moisture damage to structures for roofs and walls.



**Refurbishment made easy**  
DASAPLANO combines ease of installation with reliability in service. Airtightness system for roof refurbishment from the outside.



**Practical solutions for window joints**  
Intelligent sealing tapes create reliable, durable joints between windows/doors and walls. Sealing systems tested by the IFT (Institute for Window Technology) in Rosenheim, Germany, for interior use, exterior use and sub-sill flashing.



**pro clima adhesive technology**  
creates reliable, durable joints both indoors and outdoors. Dependable adhesive tapes with water-resistant SOLID acrylate technology, solvent-free adhesives and primers, grommets/gaskets and solutions for detail features.



Your pro clima partner