

# Installation instructions

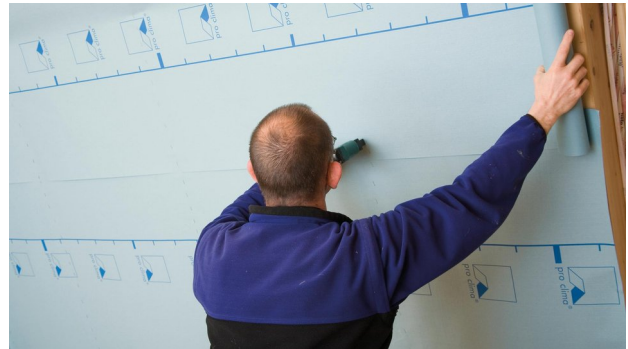
## DB+

### Installation steps



#### 1. Install the membrane

Roll out the membrane and fasten it using staples with a width of at least 10 mm and a length of 8 mm at intervals of 10-15 cm (5-10 cm for blown-in insulation). Install the membrane leaving an additional 4 cm overlap at adjacent building structures so that an airtight bond can be applied here subsequently.



#### 2. Overlap the membranes in the case of horizontal installation

Allow the membranes to overlap by approx. 10 cm in the case of installation perpendicular to the supporting structure. The marking that is printed onto the membrane will serve as a guide here.



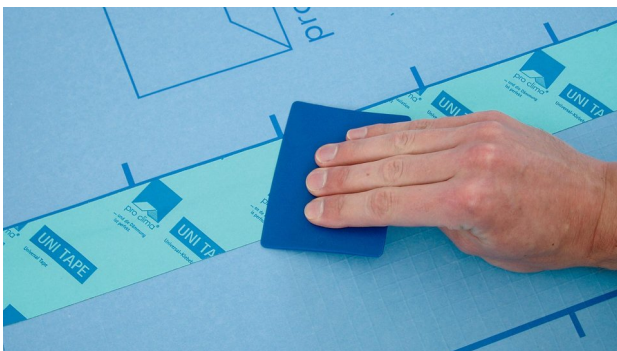
#### 3. Overlap the membranes in the case of vertical installation

Allow for an overlap of at least 1 cm on fixed subsurfaces (e.g. rafters) in the case of installation parallel to the supporting structure.



#### 4a. Tape the overlap

Clean the subsurface (dry and free of dust, silicone and grease) and carry out an adhesion test, if necessary. Centre the UNI TAPE system adhesive tape on the overlap and gradually stick it in place, ensuring that there are no folds or tension.



#### 4b. Tape the overlap

Rub firmly using the pro clima PRESSFIX application tool to secure the adhesive bond. Ensure that there is sufficient resistance pressure.



#### 5. Sealing to smooth, non-mineral subsurfaces ...

... (e.g. knee walls made of wood-based panels) should also be implemented using UNI TAPE system adhesive tape. Centre the tape and gradually stick it in place, ensuring that there are no folds or tension (PRESSFIX).



### 6. Sealing to rough or mineral substrates

Clean the subsurface. Apply a line of ORCON F adhesive sealant of at least  $d = 5 \text{ mm}$ , or more in the case of very rough substrates if necessary. Place DB+ onto the adhesive bed, leaving slack to allow for expansion. Do not press the adhesive completely flat.



### 7. Sealing to unplastered substrates

Guide the vapour control membrane into position. Leave slack for expansion so as to allow for relative motion between components. Remove all release films from CONTEGA SOLIDO SL or CONTEGA SOLIDO IQ. Centre the tape and gradually stick it in place. Rub the tape firmly using the pro clima PRESSFIX to secure the adhesive bond. To achieve airtightness, plaster over the masonry and sealing tape.



### 8a. Alternative: Sealing to unplastered substrates

Attach the CONTEGA PV plaster-sealing tape to the wall initially at discrete points using ORCON F. The adhesive strip should be facing inwards.



### 8b. Alternative: Sealing to unplastered substrates

Guide the vapour control membrane into position, remove the release film from CONTEGA PV and stick the vapour control membrane to the tape.



### 8c. Alternative: Sealing to unplastered substrates

First plaster behind the tape, then apply the tape to the wet plasterwork and plaster over it fully.



### 9a. Sealing to roughly sawn timber

Clean the subsurface. Apply a line of ORCON F adhesive sealant of at least  $d = 5 \text{ mm}$ , or more in the case of very rough substrates if necessary. As an alternative, ORCON MULTIBOND adhesive sealant from a roll can be used.





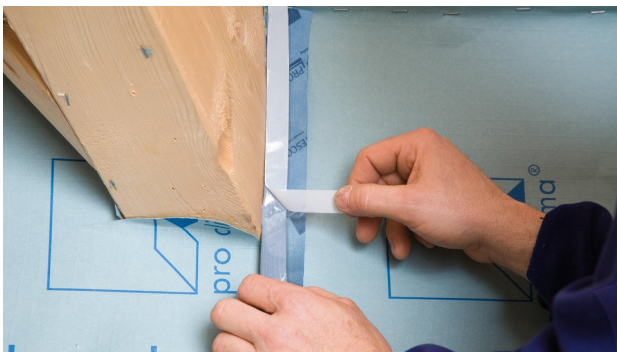
### 9b. Sealing to roughly sawn timber

Place DB+ onto the adhesive bed, leaving slack to allow for expansion. Do not press the adhesive completely flat.



### 10b. Sealing to plastered chimney (insulated or double-shelled)

Then cut into short pieces of TESCON VANA as far as the centre, create corner shapes and then stick in place.



### 12. Corner sealing

Guide TESCON PROTECT pre-folded corner sealing tape into the corner on the release film and stick the first independent adhesive strip. Then remove the release film and stick the second independent adhesive strip.



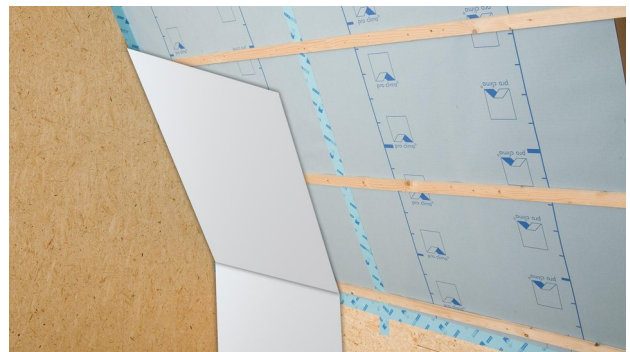
### 10a. Sealing to plastered chimney (insulated or double-shelled)

Seal DB+ with ORCON F as shown in Figure 6.



### 11. Sealing around pipes and cables

Place a KAFLEX or ROFLEX sealing grommet over the cable or pipe and stick it to DB+. The cable grommets are self-adhesive. Tape the pipe grommets to the membrane using TESCON VANA or UNI TAPE.



### 13. Battens, interior cladding

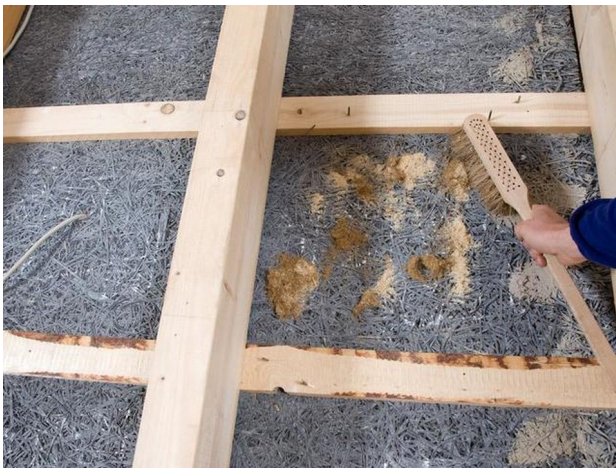
Install battens (e= max. 65 cm) to bear the weight of the insulation, and install interior cladding to provide protection against UV light and other damage.



#### 14. Quality assurance

It is recommended that airtightness should be checked using a BlowerDoor test.

### Roof reburbishment from the outside



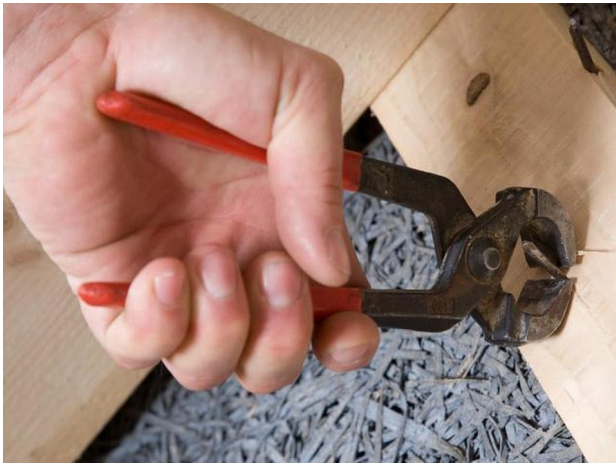
#### 1a. Clean the subsurface

Clean the subsurface. Brush off with a hand brush, ...



#### 1b. Clean the subsurface

... if necessary, clean with a vacuum cleaner and wipe down.



#### 2. Preparation

Remove any sharp-edged or pointy objects (e.g. nails) that protrude from the interior cladding into the area between the rafters.



#### 3. If necessary, insert padding

To protect DB+, install panel-shaped insulating material with a strong structure on the existing interior cladding. The thickness of the insulation underneath DB+ should be a max. of 1/3 of the total insulation thickness.





#### 4a. Install the membrane

Roll out the membrane parallel to the rafters, align it, allow an extra 3-4 cm at the sides of the rafters and press neatly into the corners with an auxiliary lath.



#### 4b. Install the membrane

Avoid convection tunnels. Install the membrane leaving an additional 4 cm overlap at adjacent building structures too so that an airtight bond can be applied here subsequently.



#### 5. Fix to the rafters

Fasten the membrane using galvanised staples with a width of at least 10 mm and a length of 8 mm at intervals of 10-15 cm. The auxiliary lath that can be moved freely can serve as a support for the pneumatic staple gun and protects the membrane against damage.



#### 6a. Clean the subsurface

Clean the subsurface (dry and free of dust, silicone and grease). If necessary, brush off, clean with a vacuum cleaner and wipe down. Very fine dust can be bound by applying TESCON PRIMER.



#### 6b. Seal at the rafters in an airtight manner

Apply a line of ORCON F adhesive sealant of at least  $d = 5 \text{ mm}$  to roughly sawn rafters, or more in the case of very rough subsurfaces if necessary, and stick the membrane to this.



#### 7. Sealing to smooth rafters

Bond to smooth/planned rafters using the UNI TAPE universal adhesive tape. Apply the adhesive tape centrally and gradually stick it in place. Rub firmly using the pro clima PRESSFIX application tool to secure the adhesive bond. Ensure that there is sufficient resistance pressure. The subsurface must be suitable for permanent sealing. If necessary, brush off, clean with a vacuum cleaner and wipe down. Very fine dust can be bound by applying pro clima TESCON PRIMER.



#### 8. Membrane overlaps, if necessary

Allow for an overlap of approx. 10 cm between the membranes. Centre the UNI TAPE system adhesive tape on the overlap and gradually stick it in place, ensuring that there are no folds or tension. Rub firmly using the pro clima PRESSFIX application tool to secure the adhesive bond. Ensure that there is sufficient resistance pressure.



#### 9. Sealing at the bargeboard

First create a smooth finish on rough wall caps. Clean the subsurface. Apply a line of ORCON F adhesive sealant of at least  $d = 5 \text{ mm}$ , or more in the case of very rough subsurfaces if necessary.





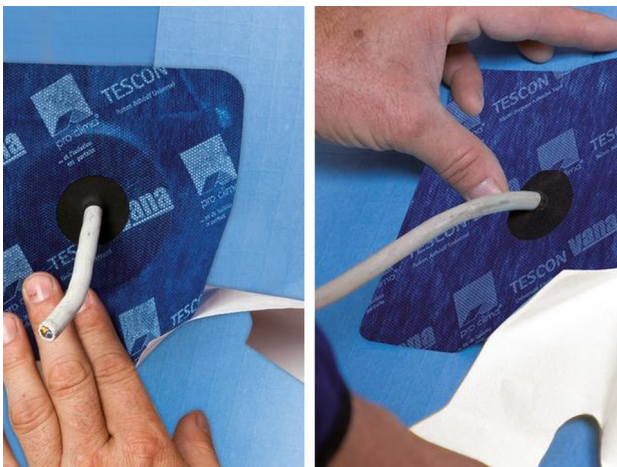
### 10. Sealing at the bargeboard

Place DB+ onto the adhesive bed, leaving slack to allow for expansion. Do not press the adhesive completely flat.



### 11. Sealing at eaves

Sealing to the eaves is carried out analogously to the joint at the bargeboard.



### 12. Sealing around pipes and cables

Place a KAFLEX or ROFLEX sealing grommet over the cable or pipe and stick it to DB+. The cable grommets are self-adhesive.



### 13. Sealing around pipes

Tape the pipe grommets to the membrane using TESCO VANA. Rub firmly using the pro clima PRESSFIX application tool to secure the adhesive bond. Ensure that there is sufficient resistance pressure.



### 14. Compartment insulation and underlay

The next step is to insert the insulation and install the underlay, e.g. pro clima SOLITEX MENTO 3000. Insulation cover for rafters is possible as an option, but is not required.

© 2024 Pro Clima New Zealand. All rights reserved. The trademarks in this document are registered to Pro Clima or one or more of its affiliates.

The information provided in this document is based on practical experience and current knowledge and was correct at the time of publication. Pro Clima reserves the right to change technical details as developments occur and improvements are made to our products.

Pro Clima recommends reviewing the latest technical data on the [www.proclima.co.nz](https://www.proclima.co.nz) [<https://www.proclima.co.nz>] website to ensure the most current document version.

**PRO CLIMA NEW ZEALAND**

Upper North Island: 09 892 9900 [tel:006498929900]

Lower North Island: 04 589 8460 [tel:006445898460]

South Island: 03 327 4925 [tel:006433274925]

Technical: [support@proclima.co.nz](mailto:support@proclima.co.nz) [mailto:support@proclima.co.nz]

General: [welcome@proclima.co.nz](mailto:welcome@proclima.co.nz) [mailto:welcome@proclima.co.nz]

0800 PRO CLIMA (776 254) [tel:0064800776254]