

Installation instructions

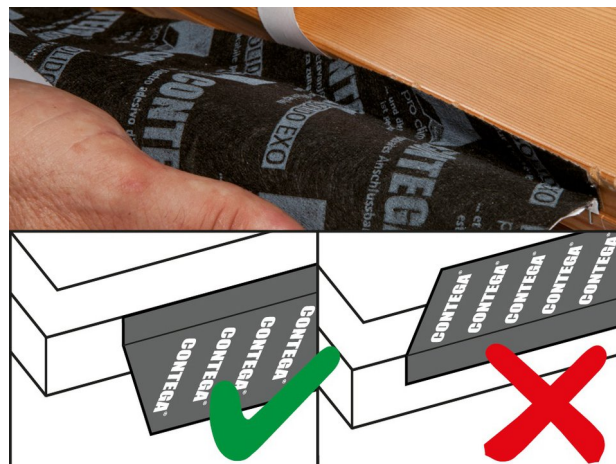
CONTEGA[®] SOLIDO EXO

Installation steps: 1. Before the window is installed



1. Masonry structures

CONTEGA SOLIDO EXO is to be applied before the window is installed. The frame is laid out flat with the exterior side facing up.



2. Stick to the head of the frame

Remove the narrow release film strip, position it on the head of the frame flush with the frame edge and then stick in place. The printed side of the tape must be facing upwards here. Rub firmly using the pro clima PRESSFIX application tool to secure the adhesive bond. NOTE: If tape application is started at the side of the window frame, ensure that the tape overlap is executed in a water-resistant manner!



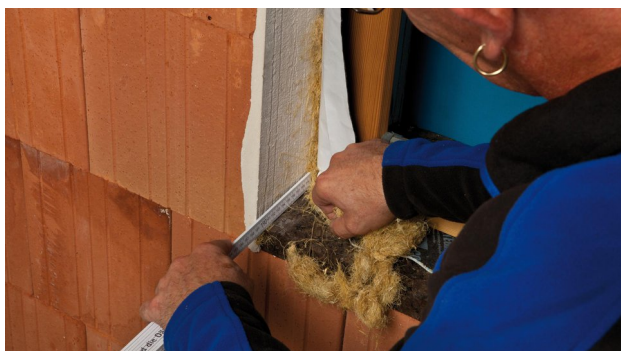
3. Preparation of corners

To ensure that the tape can be simply and securely stuck to the window reveal later on, create corner folds as shown here and stick CONTEGA SOLIDO EXO all around the window.



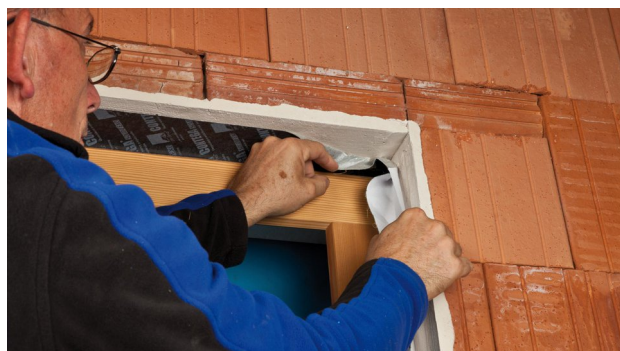
4. Cut and stick in place

When finished, cut the tape, allowing approx. 5 cm (2") of an overlap. Stick the ends to each other on the frame.



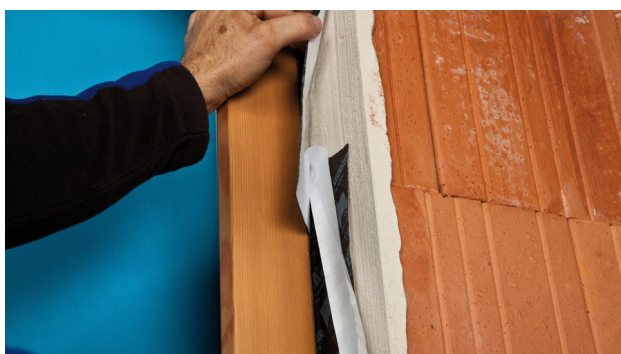
5. Install the window and insulate the joint

Fold in the CONTEGA SOLIDO EXO and install the window properly. Use a suitable fastening system. Fill in the joint with a suitable approved insulation material, leaving no cavities.



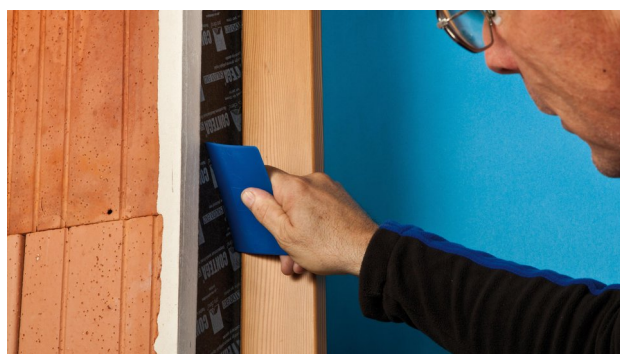
6. Stick onto the reveal and rub into place

Remove the release film strip and stick the tape in place around the reveal.



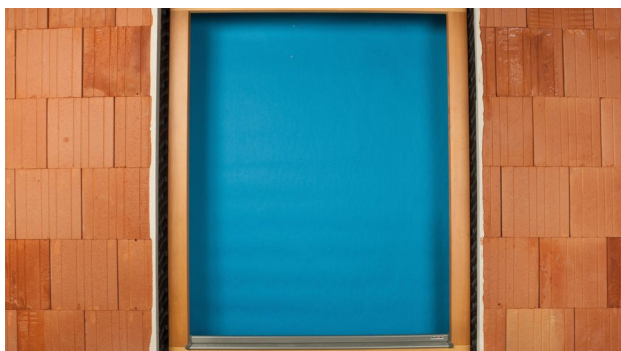
7. Stick the ends

Stick the ends of the tape to the reveal in a manner that is windtight, waterproof and resistant to driving rain.



8. Rub to secure the adhesive bond

Rub firmly using the pro clima PRESSFIX application tool to secure the adhesive bond.



9. You're finished!

You now have a completed windproof and rainproof joint, and the tape can be plastered over.

Installation steps: 2. Window already installed



1. Window in masonry structure

CONTEGA SOLIDO EXO is to be applied subsequently to an already mounted window.



2. Create a sub-sill flashing

First create a sub-sill flashing as a second waterproof layer using the EXTONSEAL ENCORS sealing adhesive tape. Guide the tape into the corners precisely and also run it to a height of 20 cm (8") on the reveals on each side.



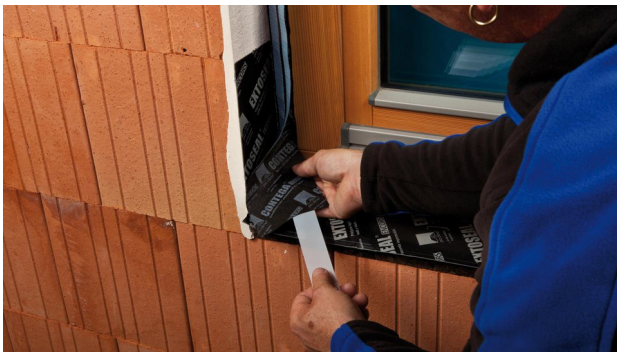
3. Cut the CONTEGA SOLIDO EXO window-sealing tape

Add approx. 4 cm (1 5/8") to the height of the frame and cut this length of tape.



4. Stick to the frame

Remove the narrow release film strip. Apply the CONTEGA SOLIDO EXO to the corner of the frame along the full width of the adhesive strip, allowing for an excess of 2 cm (3/4"). Stick the excess tape to the adjacent reveal surfaces.



5. Stick to the sub-sill flashing

Put the tape in position on the sub-sill flashing and stick it in place.



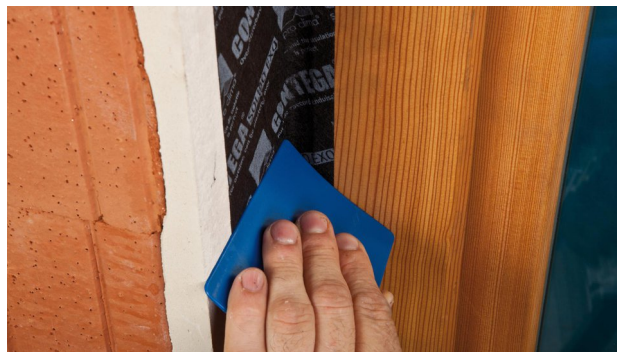
6. Stick to the reveal, allowing for slack

Remove the release film strip and gradually stick the tape in place on the reveal. Leave slack for expansion so as to allow for relative motion between components. Stick the tape to the sub-sill flashing.



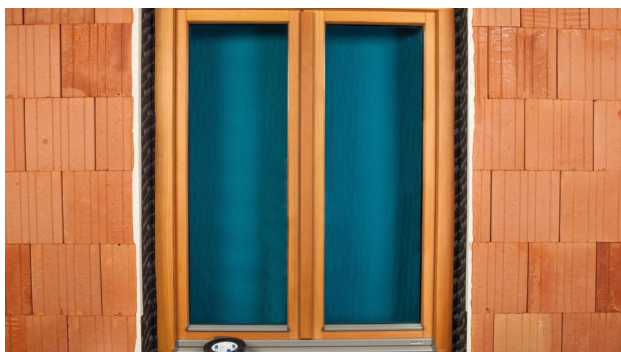
7. Stick the corners and all around the window

Continue sticking the rest of the window (window frame and reveals) in the same manner. Ensure that the corners are stuck over.



8. Rub to secure the adhesive bond

Rub the tape firmly to secure the adhesive bond. This step can be carried out more efficiently and in a manner that is kinder to your hands by using the pro clima PRESSFIX application tool.



9. You're finished!

The windtight joint is now complete, and the tape can be plastered over.

Substrates

Clean substrates before sticking. Uneven mineral substrates may need to be levelled with a smooth finish. Adhesion to frozen surfaces is not possible. There must be no water-repellent substances (e.g. grease or silicone) on surfaces where adhesives are to be applied. The width of the adhesive tape that is to be plastered over should generally not exceed 60 mm (2 3/8") or 50% of the soffit area. Detailed recommendations can be obtained from the relevant plaster producer. Subsurfaces must be sufficiently dry and stable.

Permanent adhesion is achieved on all pro clima interior membranes and on other vapour check and airtight membranes (e.g. those made of PE, PA, PP and aluminium).

Adhesion can be carried out on planed and painted wood, hard plastics, hard wood-based panels (chipboard, OSB and plywood panels), metal (e.g. pipes, windows etc.), rigid foam insulation materials that can be plastered over, and on mineral substrates such as concrete and masonry.

The best results in terms of structural stability are achieved on high-quality substrates. It is your responsibility to check the suitability of the substrate; adhesion tests may be necessary. Pre-treatment with TESCON PRIMER is recommended in the case of substrates with insufficient stability.

General conditions

The bonds should not be subjected to tensile strain. Rub the adhesive tapes firmly to secure the adhesive bonds. Ensure that there is sufficient resistance pressure. Seals that are windproof and resistant to driving rain can only be achieved if the sealing tape is installed free of folds and breaks.

When plastering, please observe the recommendations of the plaster manufacturer for non-absorbent substrates. A bonding course may be necessary.

The information provided here is based on practical experience and the current state of knowledge. We reserve the right to make changes to the recommended designs and processing or to make alterations due to technical developments and associated improvements in the quality of our products. We would be happy to inform you of the current technical state of the art at the time you use our products.

Further information about installation and design details is available in the pro clima planning documentation. If you have any questions, please contact [pro clima Technical Support](<https://proclima.com/service/technical-support>).

MOLL**bauökologische Produkte GmbH**

Rheinthalstraße 35 - 43

D-68723 Schwetzingen

Fon: +49 (0) 62 02 - 27 82.0

eMail: info@proclima.de