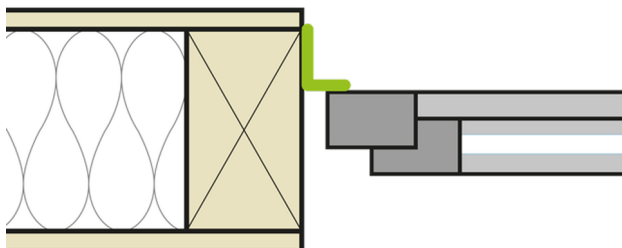


Installation instructions

CONTEGA[®] EXO

Installation steps: 1. Timber frame structures



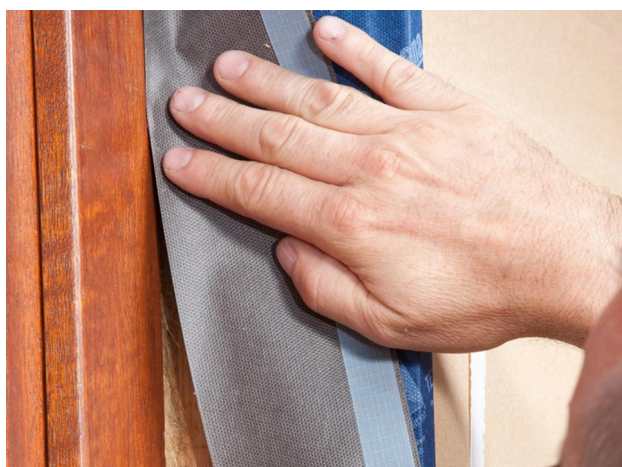
Schematic diagram

If the window is already installed, CONTEGA EXO is stuck to the frame.



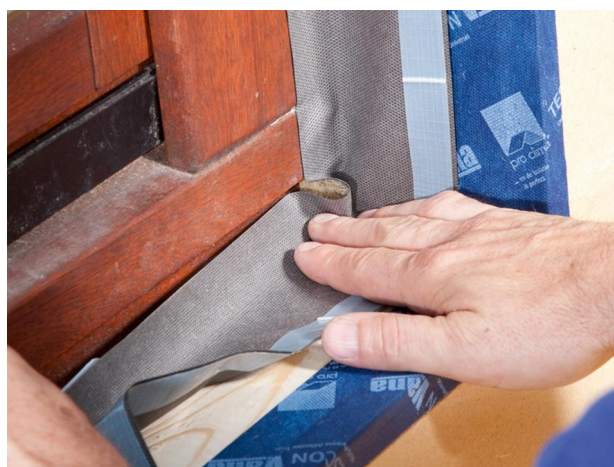
1. Remove the inner release film

Remove one of the release film strips on the membrane side (smooth side).



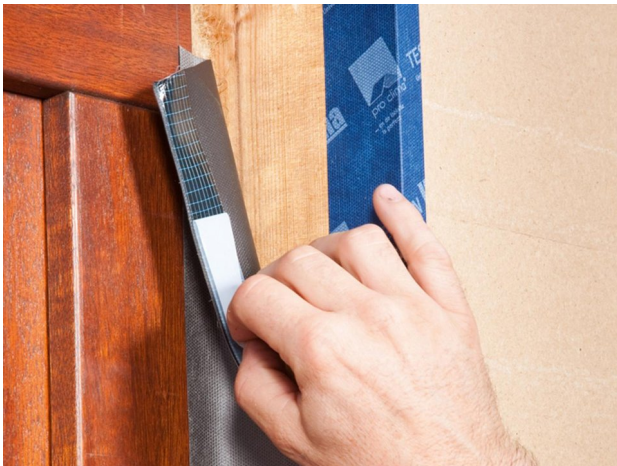
2. Stick to the frame

Place the full width of the adhesive strip of the tape onto the frame and stick the first reveal side.



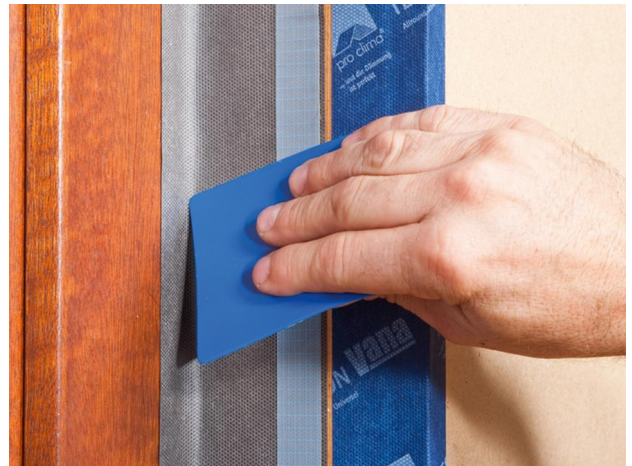
3. Preparation of corners

Fold the tape in the corner area. Ensure that there is uninterrupted windtight adhesion to the window. Then continue sticking around the rest of the frame. When finished, cut the tape, allowing approx. 5 cm of an overlap.



4. Stick to the reveal

Remove the second strip of release film from the smooth membrane side and stick the tape all around the reveal.



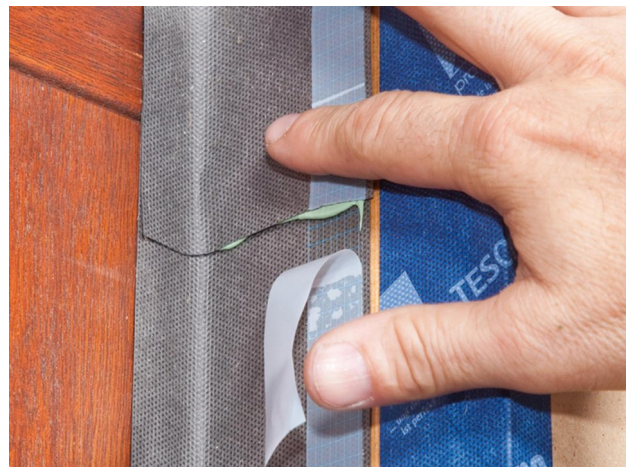
5. Rub the tape firmly to secure the adhesive bond

Rub firmly using the pro clima PRESSFIX application tool to secure the adhesive bond.



6. Stick the ends together

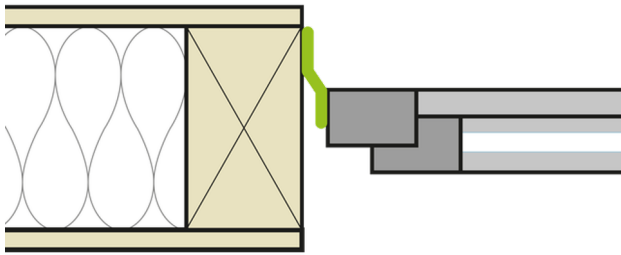
Remove the outer strip of release film from the smooth membrane side along a short length. Note: ORCON F will not stick to the release film. Apply an approx. 5 mm thick line of ORCON F adhesive sealant between the overlapping ends of the tape.



7. Stick the ends together

Place the tape onto the adhesive. You're finished!

Installation steps: 2. Timber frame structures



Schematic diagram

CONTEGA EXO has already been applied to the side of the window frame – for example, by the window installation technician.



2. Stick to the reveal

Remove the release film from the smooth membrane side and stick the tape all around the reveal in a manner that is windtight and resistant to driving rain. Rub firmly using the pro clima PRESSFIX application tool to secure the adhesive bond. Ensure that there is sufficient resistance pressure.



1. Preparation of corners

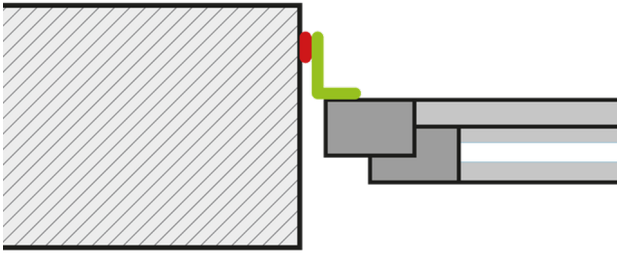
Remove the release film, fold the tape in the corner area and stick to one another. Stick the tape in place all around the reveal in a manner that is windtight and resistant to driving rain. Rub firmly using the pro clima PRESSFIX application tool to secure the adhesive bond. Ensure that there is sufficient resistance pressure.



3. Stick the ends together

Apply an approx. 5 mm thick line of ORCON F adhesive sealant between the overlapping ends of the tape. Place the tape onto the adhesive. Do not press the adhesive completely flat so as to allow for relative motion between components.

Installation steps: 3. Masonry/concrete structures



Schematic diagram

If the window is already installed, CONTEGA EXO can be applied to the frame.



1. Stick to the frame

Remove one of the release film strips on the smooth membrane side. Place the full width of the adhesive strip of the tape onto the frame and stick the first reveal side. Rub firmly using the pro clima PRESSFIX application tool to secure the adhesive bond.



2. Remove the inner release film

Remove the inner strip of release film on the first reveal side as far as the first corner.



3. Preparation of corners

Fold the tape in the corner area. Ensure that there is uninterrupted windtight adhesion to the window. Then continue sticking around the rest of the frame. When finished, cut the tape, allowing approx. 5 cm of an overlap.



4. Apply adhesive to surface

Apply a line of ORCON F adhesive sealant to the reveal in a compact zig-zag pattern.



6. Stick the ends together

Apply an approx. 5 mm thick line of ORCON F adhesive sealant between the overlapping ends of the tape. Place the tape onto the adhesive. Do not press the adhesive completely flat so as to allow for relative motion between components.



5. Place the tape onto the adhesive

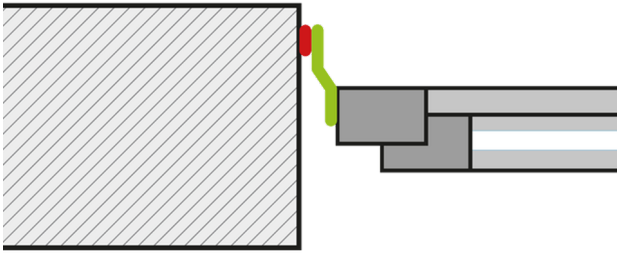
Remove the inner release film all the way around. Note: ORCON F will not stick to the release film. Place the tape onto the adhesive. Do not press the adhesive completely flat so as to allow for relative motion between components.



7. Remove the outer release film

Remove the outer strip of release film (on the fleece side) all the way around. Note: plaster will not adhere to the release film. CONTEGA EXO can be plastered over.

Installation steps: 4. Masonry/concrete structures



Schematic diagram

CONTEGA EXO has already been applied to the side of the window frame – for example, by the window installation technician.



1. Remove the inner release film

Remove the release film from the non-printed side of the membrane and place the tape onto the adhesive. Note: ORCON F will not stick to the release film. Do not press the adhesive completely flat so as to allow for relative motion between components.



2. Apply adhesive to surface

Apply an approx. 5 mm thick line (more in the case of very rough subsurfaces, if necessary) of ORCON F adhesive sealant to the reveal in a compact zig-zag pattern.



3. Preparation of corners

Fold the tape in the corner area. Remove the release film in the corner area and stick the tapes to one another. Ensure that there is uninterrupted windtightness at the joint between the tapes.



4. Place the tape onto the adhesive

Place the tape onto the adhesive.



5. Stick the ends together

Apply an approx. 5 mm thick line of ORCON F adhesive sealant between the overlapping ends of the tape. Place the tape onto the adhesive. Do not press the adhesive completely flat so as to allow for relative motion between components.



6. Stick the corners

Stick the folded corners together using ORCON F. The tape can then be plastered over more easily later on.



7. You're finished!

You now have a finished joint that is open to diffusion, resistant to driving rain and windtight! The tape can now be plastered over.

General conditions

IMPORTANT INFORMATION

- Thin, highly pliable and easily formed into corners and shapes
- Outstanding adhesion in wet and cold conditions
- Fleece side can be plastered or rendered over

PRODUCT DESCRIPTION

CONTEGA® EXO is a UV-stabilised, vapour-permeable, external connection adhesive strip which makes effective connections to penetrations through wall assemblies such as windows and doors. It forms an essential part of your weather resistive barrier (WRB) system. Made from polypropylene with acrylate adhesive, it has excellent workability and adhesion for effective and durable air seals.

WEATHER EXPOSURE

This product is designed to withstand up to 90 days of UV exposure during installation. Construction should be detailed to prevent direct continued sunlight onto the product in service.

APPLICATION NOTES

Before application, substrate should be brushed or wiped clean to provide effective adhesion. Surfaces should be even and smooth enough to provide a clean connection. Surfaces must be free of grease, silicone and other water repellent substances. The product should be applied using the pro clima PRESSFIX tool to activate the pressure sensitive adhesive and ensure a long-term durable seal. The bond must not be subjected to tensile strain over time. Any load borne by the product must be transferred to the substrate or other supporting materials as necessary.

© 2024 Pro Clima New Zealand. All rights reserved. The trademarks in this document are registered to Pro Clima or one or more of its affiliates.

The information provided in this document is based on practical experience and current knowledge and was correct at the time of publication. Pro Clima reserves the right to change technical details as developments occur and improvements are made to our products.

Pro Clima recommends reviewing the latest technical data on the www.proclima.co.nz [<https://www.proclima.co.nz>] website to ensure the most current document version.

PRO CLIMA NEW ZEALAND

Upper North Island: 09 892 9900 [tel:006498929900]

Lower North Island: 04 589 8460 [tel:006445898460]

South Island: 03 327 4925 [tel:006433274925]

Technical: support@proclima.co.nz [mailto:support@proclima.co.nz]

General: welcome@proclima.co.nz [mailto:welcome@proclima.co.nz]

0800 PRO CLIMA (776 254) [tel:0064800776254]