

Installation instructions

AEROFIXX + AEROBOXX

AEROFIXX application method



1. Prepare AEROFIXX

The spray gun is not yet connected to the compressed air. Screw off the spray head and have required spray nozzles at hand.



2. Insert the foil cartridge

Insert an AEROSANA VISCONN or AEROSANA VISCONN FIBRE 600 ml (20 US fl oz) foil cartridge into the spray gun. Spray a little lubrication oil, protection oil or silicone spray into the cylinder before it is used for the first time and subsequently from time to time



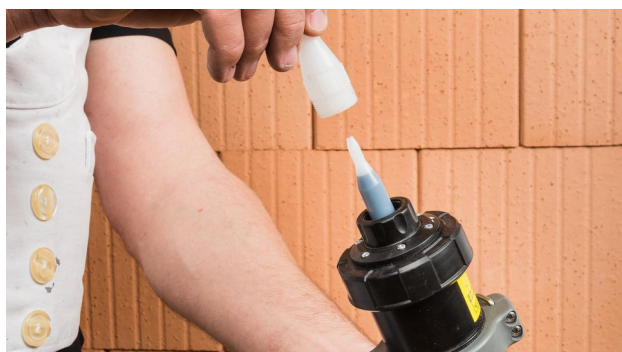
3. Open the foil cartridge

Pull the foil cartridge out of AEROFIXX slightly and make a cut with a utility knife or scissors. Then allow it to slide back in again.



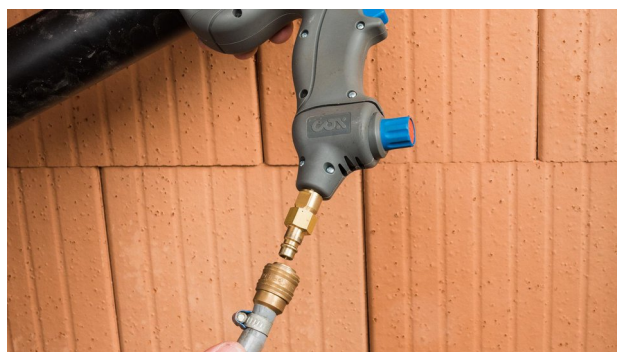
4. Screw on the spray head

When putting the spray gun on, ensure that the inner spray nozzle lies flat on the foil cartridge.



5. Put on the air nozzle

Hand-tighten the air nozzle onto the spray head.



6. Connect AEROFIXX

Connect the spray gun to the compressed air.
Air requirement approx. 250 l/min.
Set the pressure to 6 bar (87 psi) on the pressure reducer.



7. Set the air throughput

Set the air throughput on the spray device. The recommended output setting is: set to "fully open" and then turn back by half a revolution.



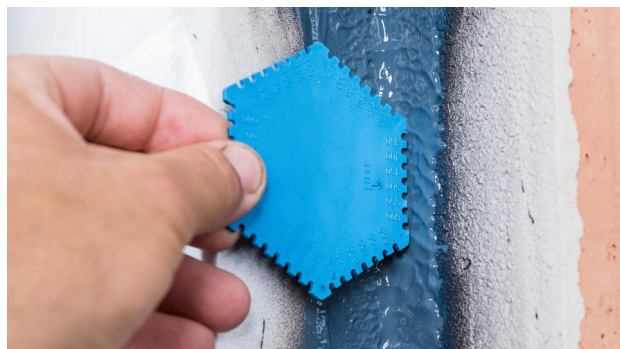
8. Set the sealant throughput

Turn the ring underneath the spray nozzle:
The sealant throughput increases as you turn towards "Line application" and decreases as you turn towards "Spray application"; default setting: medium



9. Spraying distance

The distance to the subsurface should be approx. 10 cm (4"). Spraying should be carried out perpendicular to the subsurface.



10. Film thickness

The minimum thickness is 600 µm (1/32"). Please check this using a measuring gauge. The minimum thickness has been achieved when a seamless, slightly wavy, but non-running surface ('orange peel') is formed.



11. Spray surfaces

The best coverage is achieved when one layer is first sprayed on horizontally and a second layer is then sprayed on vertically. The individual spray strips should overlap.



12. Fill joints (line application)

Turn the ring under the spray nozzle to the "Line application" position and fill the joint with a line of sealant.



13. Spray over joints

Then turn the ring back to the "Spray application" position and spray over the joint generously with sealant.



14. Remove the foil cartridge

Screw off the spray head and remove the inner spray nozzle. Press the empty foil cartridge out of the material tube using compressed air.



15. Refilling

Clean the device if necessary. Slide the plunger into the spray gun again and insert a new foil cartridge.



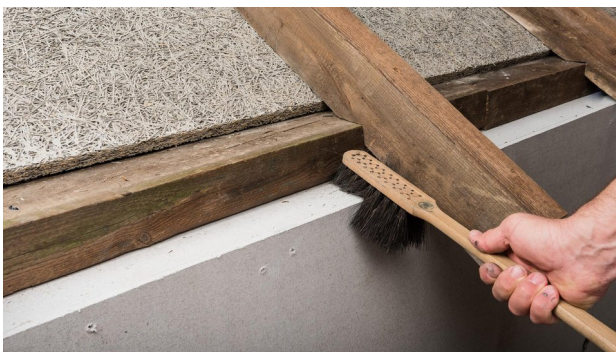
16. Cleaning AEROFIXX

Screw off the spray head and remove the foil cartridge. Wipe off the device with a damp cloth. Rinse off the spray nozzles and spray head with water. Collect the water used for washing and dispose of it properly.

Safety information:

Read the safety instructions that are provided with AEROFIXX. The general safety regulations for working with compressed air apply here. Wear personal protective equipment when working with this device.

Eave refurbishment with AEROFIXX



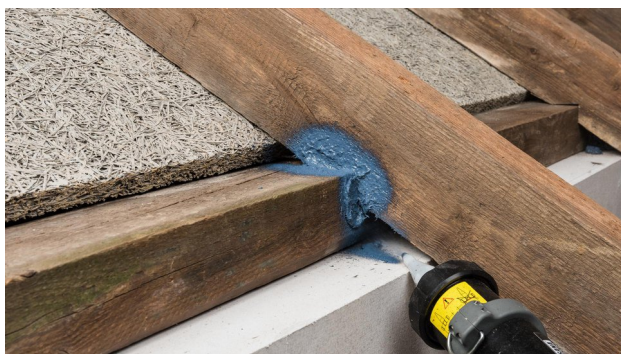
1. Preparation

Brush off subsurfaces; if necessary, clean with a vacuum cleaner and wipe down.



2. Spray over birdsmouth joints

In the area around the birdsmouth joints, spray over the joints between rafters and the wallplate with a generous amount of sealant so that any movement of components that occurs can be accommodated.



3. Continue along the rest of the eave

Also apply a generous amount of AEROSANA VISCONN / FIBRE below the rafters in the area around the birdsmouth joints.



4. Seal wide joints

Switch the AIRFIXX to line application and completely fill the gap (in this case, between the wallplate and the knee wall) with AEROSANA VISCONN / FIBRE.



5. Spray over the joint

Set the AEROFIXX to spray application and spray over the joint in a generous manner. Apply the sealant to a width of at least 30 mm (1 1/4") on the surfaces to be sealed. The layer thickness is sufficient when a textured surface ('orange peel') is recognisable.



6. Use as a primer

If required, apply AEROSANA VISCONN / FIBRE as a primer onto timber that the refurbishment vapour check (e.g. DASATOP) will be bonded to subsequently.



7. Stick the joint

After the sealant has fully dried, seal the refurbishment vapour check in an airtight manner using TESCO VANA, for example.

Joints at double collar ties with AEROFIXX



1. Initial situation



2. Preparation

Brush off sub-surfaces; if necessary, clean with a vacuum cleaner and wipe down.



3. Check the joint width

Gaps of up to 3 mm can be filled using AEROSANA VISCONN. Use AEROSANA VISCONN FIBRE for wide gaps of up to 20 mm (3/4"). In this case, the gap must be filled with sealant to a depth of at least half the width of the gap.



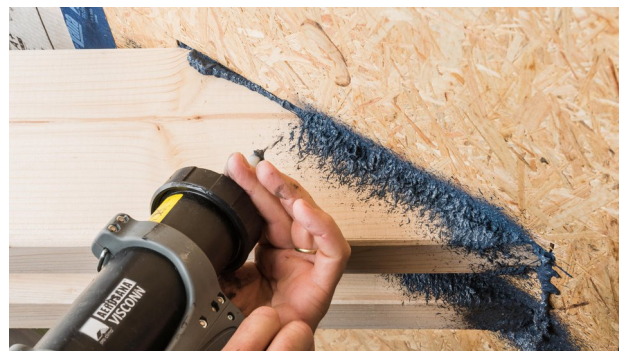
4. Set the device

Set the AEROFIXX to line application.



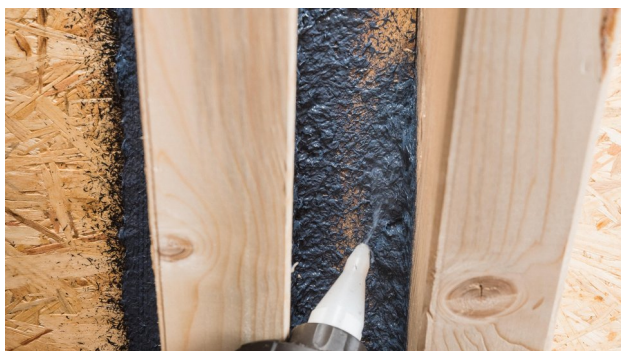
5. Fill the joint

Fill the joint with a sufficient amount of AEROSANA VISCONN / FIBRE.



6. Spray over the joint

Set the AEROFIXX to spray application and spray over the joint in a generous manner. Apply the sealant to a width of at least 30 mm (1 1/4") on the surfaces to be sealed. The layer thickness is sufficient when a textured surface ('orange peel') is recognisable.



7. Work on detail features

Areas that are difficult to access can also be sealed conveniently using the spray method.



8. Check the joint

If necessary, seal any gaps with a brush and AEROSANA VISCONN / FIBRE.



9. The finished joint at a double collar tie penetration

Window joint with AEROFIXX



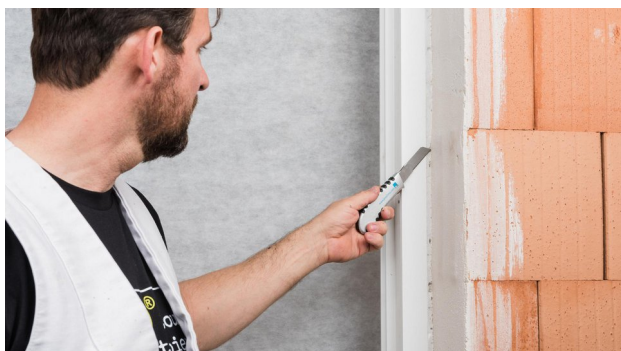
1. Initial situation

Window is installed, window joint has been filled with insulation material.



2. Preparation

Brush off subsurfaces; if necessary, clean with a vacuum cleaner and wipe down.



3. Cut away any excess insulation material

If necessary, cut away any protruding insulation.



4. Apply masking tape to the window frame

When doing this, leave a strip with a width of at least 6 mm free on the frame for subsequent sealing using AEROSANA VISCONN / FIBRE.

Alternatively, remove the joint insulation to a sufficient extent to create a clean surface for a lateral bond to the side of the window frame.



5. Spray on the sealant

Spray a sufficient amount of AEROSANA VISCONN / FIBRE onto the window frame, the joint insulation and the adjacent masonry. Apply the sealant evenly. Cracks and pores must be closed by flooding them. The layer thickness is sufficient when a textured surface ('orange peel') is recognisable.



6. Continue around the rest of the window

Bond all four sides of the frame to the masonry using AEROSANA VISCONN / FIBRE.



7. Check the joint

If necessary, seal any gaps with a brush and AEROSANA VISCONN / FIBRE.



8. Interior and exterior use

AEROSANA VISCONN / FIBRE can be used for interior and exterior window joints. The installation method is identical in both cases.



9. Remove the masking tape

Remove the protective masking tape immediately after the window joint is sealed.

Remove any traces of AEROSANA VISCONN / FIBRE from the window frame immediately using a damp cloth.

General conditions

The AEROFIXX device is connected to a compressor with a suction flow rate of >300 l/min. The pressure should be set to 6 bar. All AEROSANA VISCONN products in 600 ml (20.3 US fl oz) foil cartridges can be applied using the AEROFIXX device. You can easily switch between line application and spray application by turning the spray head.

The information provided here is based on practical experience and the current state of knowledge. We reserve the right to make changes to the recommended designs and processing or to make alterations due to technical developments and associated improvements in the quality of our products. We would be happy to inform you of the current technical state of the art at the time you use our products.

Further information about installation and design details is available in the pro clima planning documentation. If you have any questions, please contact [pro clima Technical Support](<https://proclima.com/service/technical-support>).

MOLL

bauökologische Produkte GmbH
Rheintalstraße 35 - 43
D-68723 Schwetzingen
Fon: +49 (0) 62 02 - 27 82.0
eMail: info@proclima.de