



External windtightness

Roofing underlays

Sub-roof underlays

Breather membranes

Temporary protection

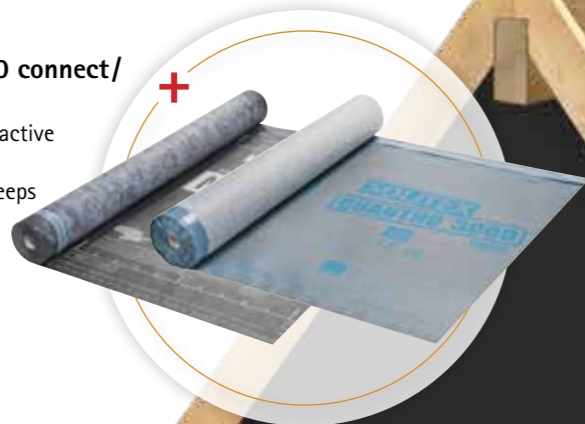


Reliable solutions for sealing building envelopes

Roofing underlays

SOLITEX QUANTHO 3000 connect/ SOLITEX MENTO

Roofing underlay system with active moisture transport: Provides protection against wind and keeps the underlying structure dry
Pages 12/14



SOLITEX UM connect

Roofing underlay system for increased noise insulation and moisture protection underneath metal roof coverings
Page 16

Breather membranes

SOLITEX FRONTA

All breather membranes (WRBs) for use behind rainscreen cladding
From page 26



For example:

SOLITEX FRONTA QUATTRO FB

Flame-resistant breather membrane (WRB) for open-jointed cladding with gap widths up to 35 mm (1 3/8")
Page 26

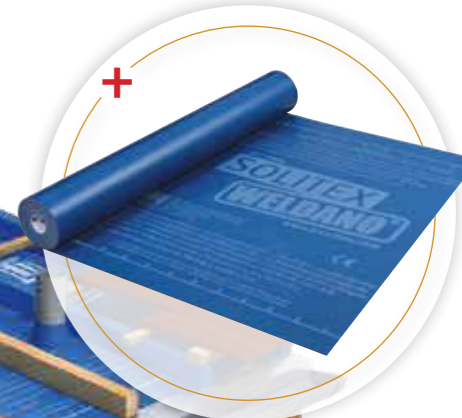
Fire class B



Sub-roof underlays

SOLITEX WELDANO 3000

Diffusion-open, homogeneously weldable roofing underlay for rainproof/watertight sub-roofs
Page 18



Temporary protection

SOLITEX ADHERO

System with full-surface adhesive airtightness and weathering-protection membranes
Page 22

Two all-rounders for interior and exterior use

Adhesive tape
TESCON VANA



Joint adhesive
ORCON F



pro clima SOLITEX systems Best possible protection for roofs and walls

+ Ensures well-protected building components: highly diffusion-open and maximum protection against driving rain

+ Dry building components: pore-free TEEE functional film actively transports moisture to the outside

+ Permanent protection thanks to the high resistance to ageing and heat of the TEEE functional film

+ Maximal flexibility in planning construction schedules thanks to up to 6 months of outdoor exposure



+ SOLITEX MENTO ULTRA: high degree of occupational safety, even for large-sized roof tiles, in accordance with the requirements of DIN 4426 »Equipment for protection against falls on roofs«

+ SOLITEX MENTO PLUS / ULTRA: extremely robust thanks to reinforcement: suitable for blown-in insulation materials

+ Optimal insulation effectiveness thanks to windtightness

+ High degree of protection for building structures during the construction phase: suitable as a temporary covering during the construction period



+ Silver Bark House, Co. Down, Northern Ireland

Sleek, timber-clad home built to passive house standards. The architects and developer won the prestigious overall award in the Sustainability category at the 2023 RIAI Architecture Awards for this project.

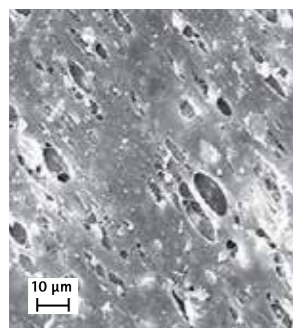
| | |
|------------------------|-------------------------------------|
| Developer: | FourSeven Ltd. |
| Architects: | Marshall McCann Architects |
| Timber construction: | Fallis Passive Design & Build |
| Building type: | Residential |
| Airtightness: | Ecological Building Systems |
| Weathering protection: | SOLITEX ADHERO 1000, TESCON VANA |

pro clima actively transports moisture to the outside

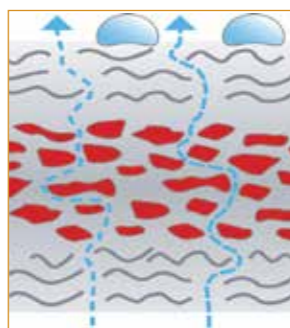


Conventional technology: Micropore membranes

No active moisture transport = A wet structure



Microscopic image of a conventional underlay membrane. Porous membranes allow moisture to escape by means of convective flow. Pores offer only moderate reliability for diffusion and watertightness against driving rain.



Micropores in a functional film:

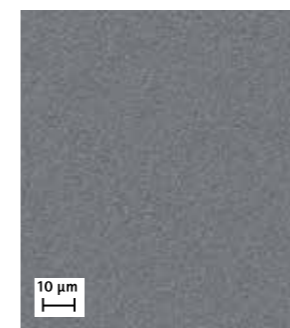
- ✗ Conventional protection against driving rain
- ✗ Passive moisture transport
- ✗ Large vapour partial pressure gradient required
- ✗ Wet membrane becomes more closed to diffusion



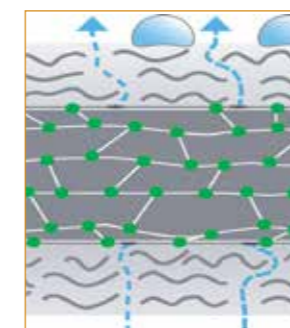
In the case of conventional PP membranes with micropores, water vapour passes to the outside through tiny holes. If a lot of vapour has to pass through, a film of moisture may form on the inside of the membrane. As a result, the membrane becomes more watertight and moisture damage may potentially occur. Moisture transport to the outside is a passive process that only works if there is a relatively high partial pressure gradient for water vapour. However, this is not always the case on modern, well-insulated structures. There is protection against water from the outside as water drops are too large and cannot enter through the pores due to their surface tension. However, if there is driving rain or if solvents or substances contained in wood reduce this surface tension, significant amounts of water can penetrate into the thermal insulation and cause mould formation and moisture damage.

Pore-free SOLITEX technology for greater protection

Active moisture transport = Dry structure, no condensation



A monolithic, pore-free SOLITEX membrane viewed at the same magnification. The monolithic membrane reliably facilitates active diffusion and ensures particularly good watertightness against driving rain.



Pore-free SOLITEX membrane:

- ✓ Maximum protection against driving rain
- ✓ Water column up to 10,000 mm (32' 10")
- ✓ Active moisture transport
- ✓ Minimal vapour partial pressure gradient required
- ✓ Wet membrane becomes more open to diffusion
- ✓ No 'tent effect'
- ✓ Can be used as a temporary covering



Pore-free membranes actively transport moisture to the outside – the more moisture is present, the faster it is transported. Their diffusion resistance drops in this case. Only a minimal partial pressure gradient for water vapour is required for moisture transport. The particularly high protection against driving rain results from the fact that there are no pores present. High impact speeds or water drops with reduced surface tension are also not a problem for the SOLITEX underlay system.

Adhesion for 100 years – Reliable adhesion that lasts as long as the building component itself!



The adhesive bonds created when implementing the interior airtightness and exterior windtightness layers must be reliable and durable. This applies both to the overlaps of membranes with one another and also to the joints between membranes and any penetrations or adjacent building components. Adhesion is important because these two sealing layers ensure that the thermal insulation structure will perform effectively and, at the same time, is protected against mould and moisture damage. And everything should of course continue to work properly in the long term – ideally for the entire service life of the building component, meaning at least 50 years. There is large variability in terms of the quality levels that can be found on the marketplace – unfortunately including some products that are barely fit for purpose.

But how can you identify a good adhesive tape? To provide even more reassurance in this regard, we have had the pro clima adhesive tapes TESCON VANA, TESCON No.1, UNI TAPE and the ORCON F joint adhesive tested independently by the University of Kassel in Germany. These four pro clima adhesive products are the only products that have demonstrated 100 years of adhesive performance in these tests. This is a unique achievement for all products worldwide. As a result, building structures are better protected in the long term.



**100 YEARS
ADHESION**

✓ successfully tested
✓ unique worldwide

TESCON VANA · TESCON No.1 · UNI TAPE · ORCON F

proclima.com/100years

Reliable even in the presence of moisture

Vapour check or underlay membranes can easily become damp or even properly wet during installation. Rain or the formation of condensation on building component surfaces are unavoidable features of everyday reality on building sites. Anybody who doesn't wish to compromise in terms of the durability of adhesive bonds or the practicalities of installation procedures should opt for TESCON adhesive tapes. The water-resistant pro clima SOLID acrylate adhesive guarantees reliable adhesive bonds for both interior and exterior applications – even in damp or wet conditions.



More information on this topic:

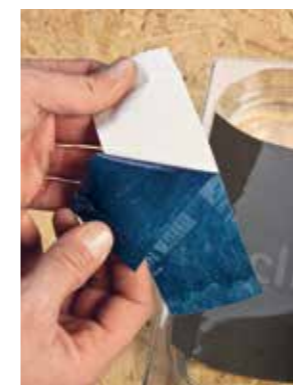
Reliable adhesion – How do adhesives work?
proclima.info/en/reliable-adhesion



Reliability even in damp or wet conditions

The water-resistant SOLID adhesive ensures quick and permanent joints with the subsurface – for both interior and exterior applications. The joints created are immediately sealed and can be subjected to loading. This facilitates:

- Reliable airtightness even with increased humidity – as typically encountered during the construction phase as a result of plastering or the installation of screed
- Reliable windtightness on roofs and facades, even in rainy weather or wet conditions



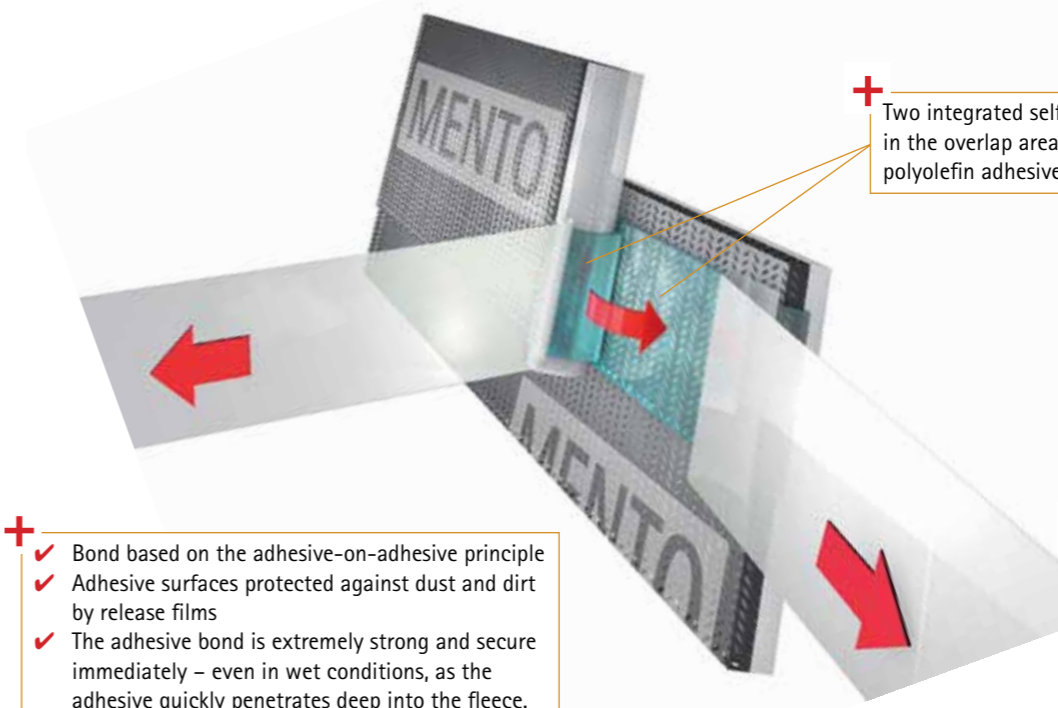
Water-resistant SOLID adhesive

[vimeo.com/
503067958](https://vimeo.com/503067958)



TESCON VANA is being stuck to a piece of SOLITEX MENTO roofing underlay membrane under water here. When a mechanical load is applied as a test, the fleece layer of the underlay membrane tears internally ('failure of the substrate'). The adhesive bond itself is still intact!

Quicker reliable sealing with pro clima connect technology



Two integrated self-adhesive strips in the overlap area with water-resistant polyolefin adhesive.



- ✓ Bond based on the adhesive-on-adhesive principle
- ✓ Adhesive surfaces protected against dust and dirt by release films
- ✓ The adhesive bond is extremely strong and secure immediately – even in wet conditions, as the adhesive quickly penetrates deep into the fleece.



pro clima connect technology is also available on the INTELLO X, DASAPLANO and DA airtightness systems for refurbishment and external roof insulation.

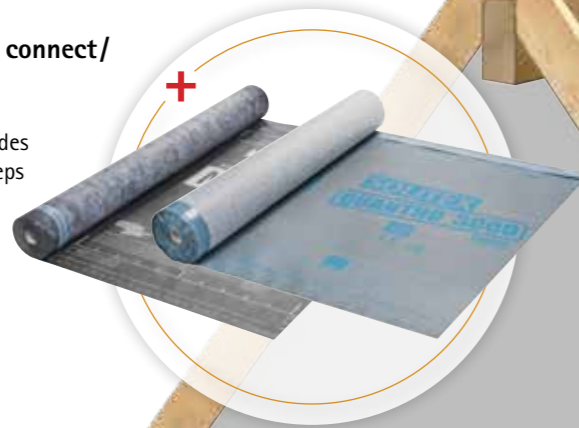
[vimeo.com/
503096028](https://vimeo.com/503096028)



Roofing underlays

SOLITEX QUANTHO 3000 connect/ SOLITEX MENTO

Roofing underlay system with active moisture transport: Provides protection against wind and keeps the underlying structure dry
Pages 12/14



SOLITEX UM connect

Roofing underlay system for increased noise insulation and moisture protection underneath metal roof coverings

Page 16

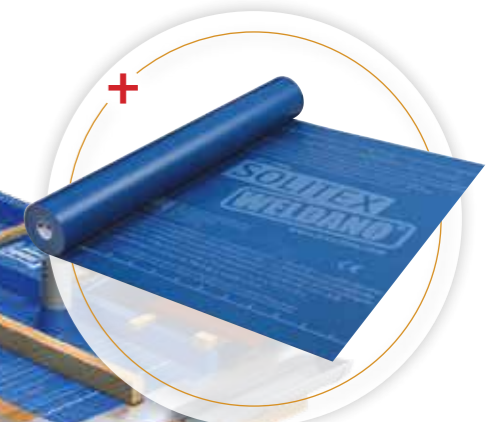


Sub-roof underlays

SOLITEX WELDANO 3000

Diffusion-open, homogeneously weldable roofing underlay for rainproof/watertight sub-roofs

Page 18



Two all-rounders for interior and exterior use

Adhesive tape
TESCON VANA



Joint adhesive
ORCON F



High-performance accessories for the SOLITEX WELDANO system

Welding liquid
WELDANO TURGA /
WELDANO TURGA HS



Joint adhesive
ORCON CLASSIC



Nail-sealing tape
TESCON NAIDECK



Roofing underlay membranes, e.g.

SOLITEX® QUANTHO 3000 connect system

Medium-weight roofing underlay with waterproof self-adhesive strips and self-sealing perforations

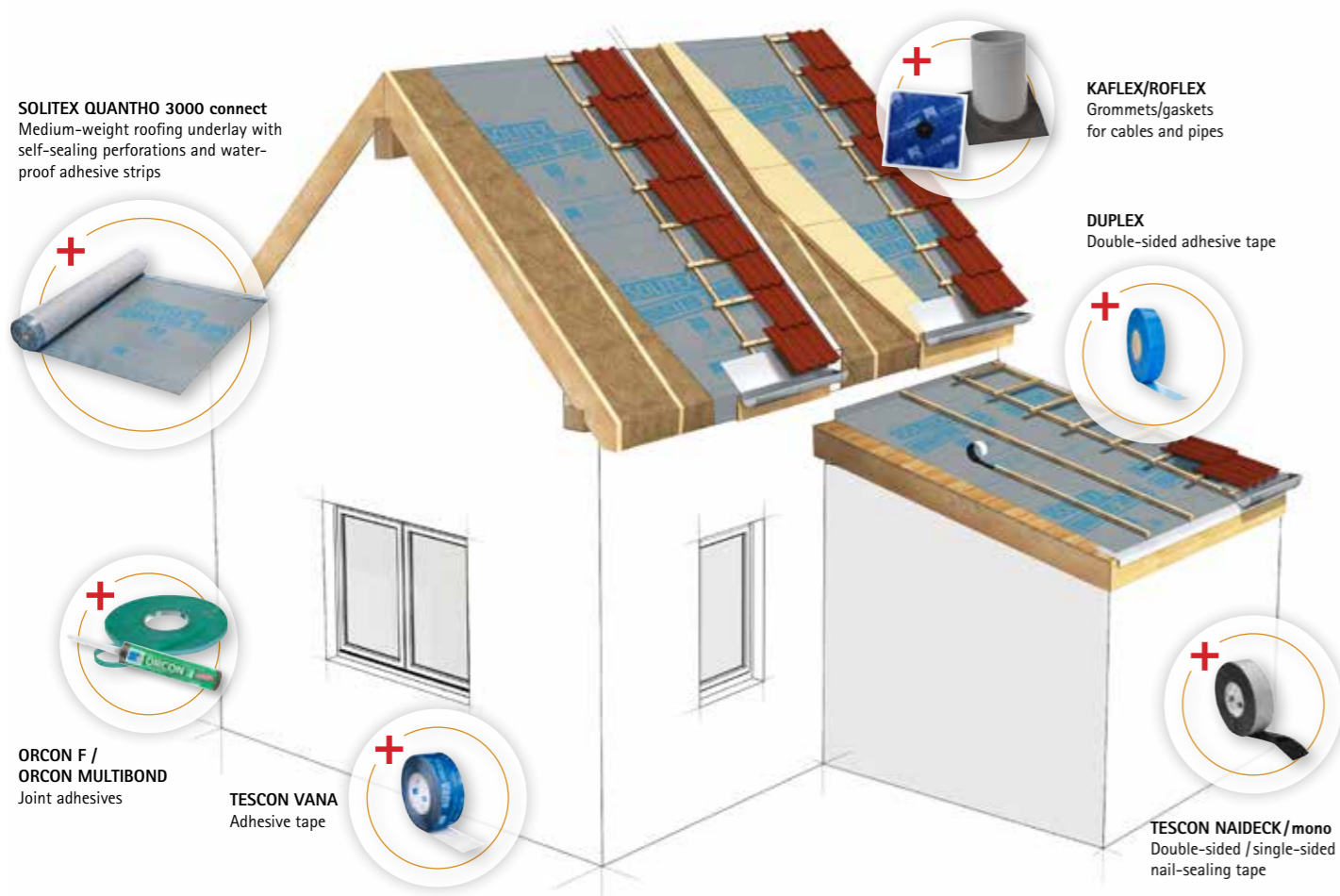
Areas of application:

For use as a diffusion-open roofing underlay over roof sheathing, MDF and wood-fibre underlay panels, and over all thermal insulation materials, including blown-in insulation materials.



Advantages:

- ✓ Maximum protection for the roof structure: excellent hail impact resistance as per ETA-23/0532 and the Swiss Association of Cantonal Fire Insurance Institutes (VKF/AEAI) with hail impact resistance class HR 5
- ✓ Efficient installation: serves as a roofing underlay with waterproof seams and self-sealing perforations for roof pitches $\geq 14^\circ$ (3:12) without the need for additional sealing measures, as per ETA-23/0532
- ✓ Reliable rainproof roofs: serves as a sub-roof underlay for roof pitches $\geq 10^\circ$ (2.1:12) with TESCON NAIDECK as an additional perforation-sealing measure over rigid substrates
- ✓ Quick waterproof adhesion: with sealing lip at the 'connect' self-adhesive strips on the long edges of the membrane
- ✓ Flexible planning of construction schedules: at least 3 months of outdoor exposure



NEW: The first 3-in-1 roofing underlay

- Excellent hail impact resistance (HR 5)
- Roofing underlay with seam and perforation protection, no nail-sealing tape required as per ETA-23/0532
- Rainproof sub-roof

Technical specifications:

| | |
|---------------------------|---|
| Functional film, one side | TPU, monolithic |
| Backing fleece | Polyester fleece |
| Self-adhesive strips | Water-resistant SOLID adhesive |
| Surface weight | EN 1849-2 230 g/m ² ; 0.75 oz/ft ² |
| s _d value | EN ISO 12572 0.16 m |
| Outdoor exposure | 4 months * / 3 months ** |
| Hail resistance | EN 13583 ETA-23/0532 |
| Hail impact resistance | VKF / AEAI Class HR 5 |
| Tensile strength MD/CD | EN 13859-1 (A) 335 N/5 cm / 355 N/5 cm ; 38 lb/in / 41 lb/in |

* Central/Northern Europe & Canada/Northern US; ** Southern Europe, Southern US, rest of world

Supply forms:

Length: 50 m (164'); width: 1.50 m (4' 11")



Further information on SOLITEX QUANTHO 3000 connect

- Installation instructions
- Detailed CAD drawings
- And much more:



Underlay with seam and perforation protection.
No nail-sealing tape required as per ETA.

SOLITEX QUANTHO 3000 connect
Medium-weight roofing underlay with self-sealing perforations and waterproof adhesive strips

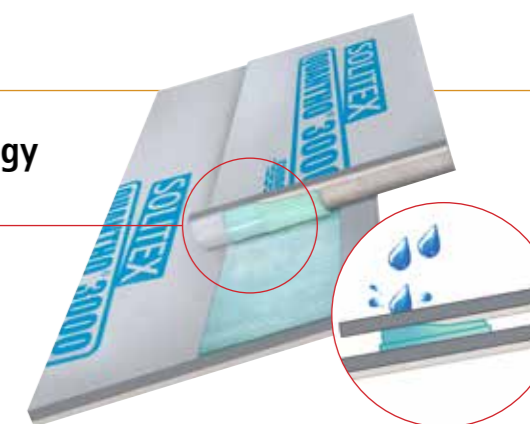


proclima.info/en/solitex-quantho-3000

Quicker reliable sealing – pro clima connect technology

With innovative sealing lip to protect against the capillary effect

- ✓ Bond based on the adhesive-on-adhesive principle
- ✓ Adhesive surfaces protected against dust and dirt by release films
- ✓ Adhesive bond is extremely strong and secure immediately – even in wet conditions
- ✓ New sealing lip principle protects against seepage



Roofing underlay membranes, e.g.

SOLITEX MENTO® 3000 system

Medium-weight roofing underlay membrane, also available with self-adhesive strips

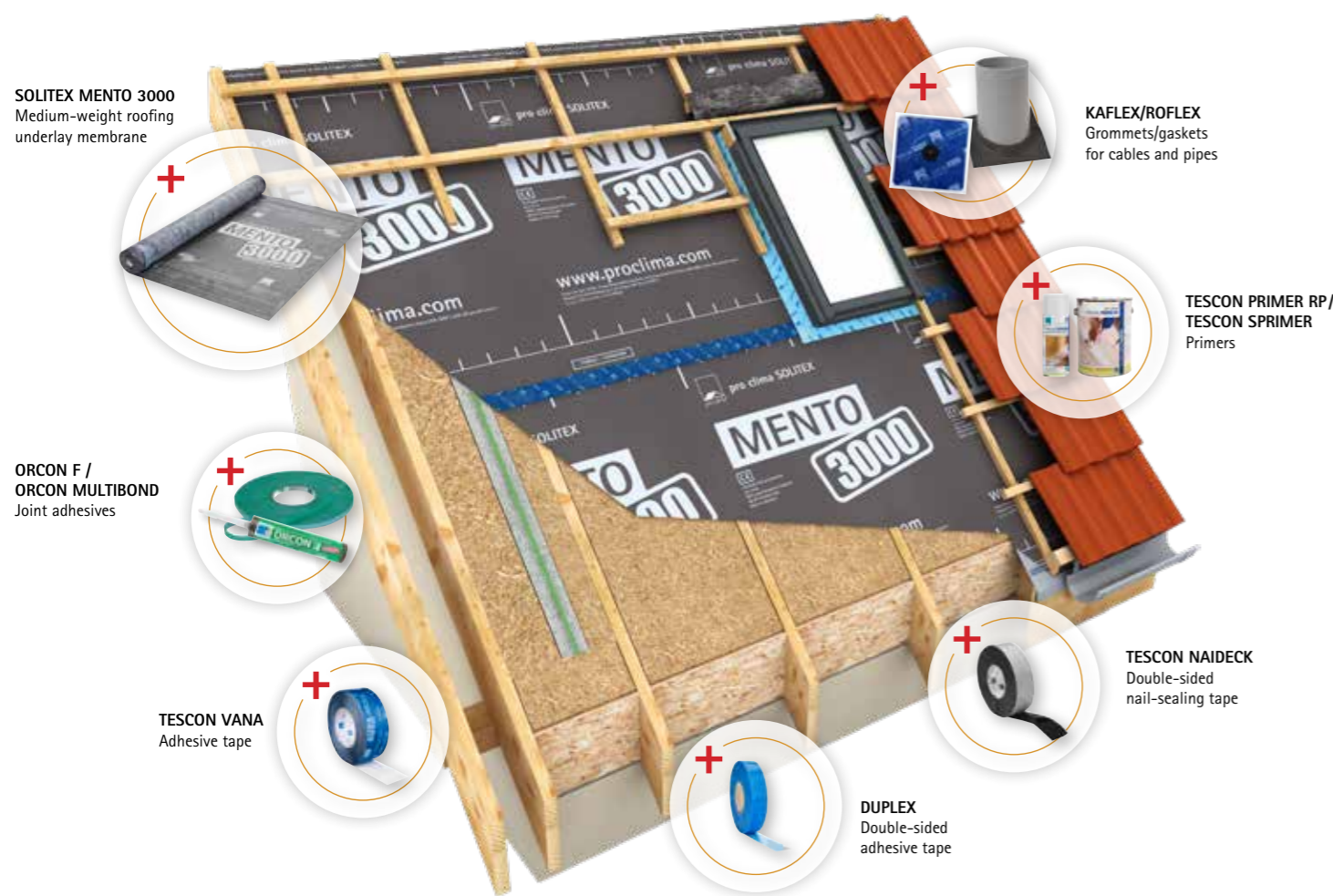
Areas of application:

For use as a diffusion-open roofing underlay over roof sheathing, MDF and wood-fibre underlay panels, and over all mat or panel-shaped thermal insulation materials.



Advantages:

- ✓ Flexible planning of construction schedules thanks to 4 months of outdoor exposure
- ✓ Well-protected building components: highly diffusion-open and maximum protection against driving rain and hail
- ✓ Dry building components: pore-free TEEE functional film actively transports moisture to the outside
- ✓ Permanent protection thanks to the high resistance to ageing and heat of the TEEE functional film
- ✓ Provides protection during the construction period: suitable as a temporary covering



SOLITEX MENTO 3000
Medium-weight roofing
underlay membrane

ORCON F /
ORCON MULTIBOND
Joint adhesives

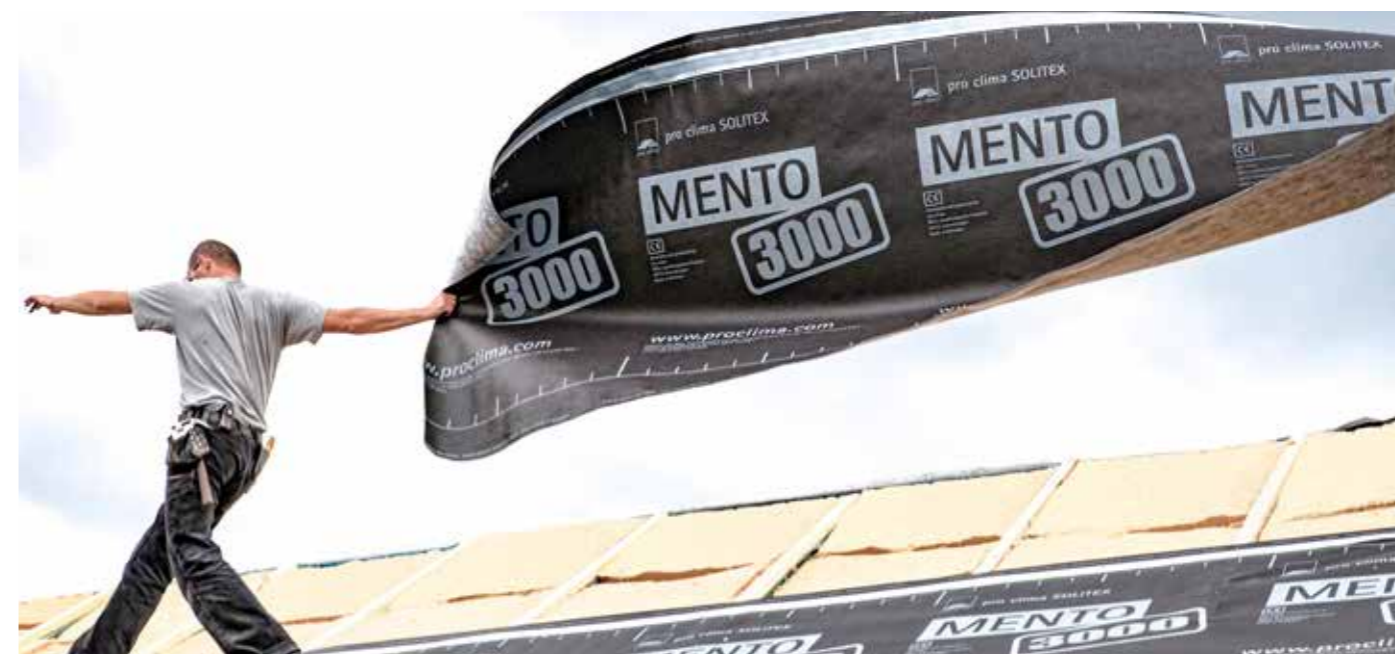
TESCON VANA
Adhesive tape

DUPLEX
Double-sided
adhesive tape

KAFLEX/ROFLEX
Grommets/gaskets
for cables and pipes

TESCON PRIMER RP/
TESCON SPRIMER
Primers

TESCON NAIDECK
Double-sided
nail-sealing tape



Technical specifications:

| | | SOLITEX MENTO 1000 | SOLITEX MENTO 3000 |
|------------------------------------|---------------------------|---|---|
| Protective and covering fleece | | Polypropylene microfibre | Polypropylene microfibre |
| Functional film | | TEEE, monolithic | TEEE, monolithic |
| Surface weight | EN 1849-2 | 115 g/m ² ; 0.38 oz/ft ² | 150 g/m ² ; 0.50 oz/ft ² |
| s _d value | EN ISO 12572 | 0.05 m | 0.05 m |
| Outdoor exposure | | 3 months | 4 months |
| Tensile strength MD/CD | EN 13859-1 (A) | 220 N/5cm / 170 N/5cm ; 25 lb/in / 19 lb/in | 280 N/5cm / 220 N/5cm ; 32 lb/in / 25 lb/in |
| Durability after artificial ageing | EN 1297 / EN 1296 | Passed | at 120 °C ; 248 °F: Passed |
| Temperature resistance | EN 1109, EN 1296, EN 1297 | Permanent -40 °C to +100 °C ; -40 °F to 212 °F | Permanent -40 °C to +120 °C ; -40 °F to 248 °F |

| | SOLITEX MENTO 5000 | SOLITEX MENTO PLUS | SOLITEX MENTO ULTRA |
|------------------------------------|---|---|---|
| Protective and covering fleece | Polypropylene microfibre | Polypropylene microfibre | Polypropylene microfibre |
| Functional film | TEEE, monolithic | TEEE, monolithic | TEEE, monolithic |
| Surface weight | 215 g/m ² ; 0.70 oz/ft ² | 175 g/m ² ; 6.23 oz/ft ² | 200 g/m ² ; 6.23 oz/ft ² |
| s _d value | 0.08 m | 0.08 m | 0.15 m |
| Outdoor exposure | 6 months | 4 months | 4 months |
| Tensile strength MD/CD | 350 N/5cm / 270 N/5cm ; 40 lb/in / 31 lb/in | 430 N/5cm / 330 N/5cm ; 49 lb/in / 38 lb/in | 780 N/5cm / 490 N/5cm ; 89 lb/in / 56 lb/in |
| Durability after artificial ageing | Passed | at 120 °C ; 248 °F: Passed | Passed |
| Temperature resistance | Permanent -40 °C to +120 °C ; -40 °F to 248 °F | Permanent -40 °C to +100 °C ; -40 °F to 212 °F | Permanent -40 °C to +100 °C ; -40 °F to 212 °F |

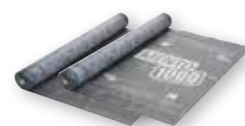
Supply forms:

Length: 50 m (164'); width: 1.50 m (4' 11"); 3.00 m (9' 10")



All roofing underlay membranes and further information on SOLITEX MENTO 3000

- Installation videos
- Detailed CAD drawings
- And much more:



SOLITEX MENTO 1000
Light-weight roofing
underlay, outdoor
exposure: 3 months



SOLITEX MENTO 3000
Medium-weight roofing
underlay outdoor exposure:
4 months



Outdoor exposure: 6 months

SOLITEX MENTO 5000
Heavy-weight roof
underlay



Suitable for blown-in insulation

SOLITEX MENTO PLUS
Reinforced roofing
underlay



Suitable for blown-in insulation
Occupational safety as per DIN 4426

SOLITEX MENTO ULTRA
Reinforced roofing underlay with
high tear resistance



Underlay with seam and perforation protection.
No nail-sealing tape required as per ETA.

SOLITEX QUANTHO 3000 connect
Medium-weight roofing underlay with self-sealing
perforations and waterproof adhesive strips

Roofing underlay for metal roof coverings

SOLITEX® UM connect system

Roofing underlay membrane with 3D separation mesh and self-adhesive strips

Areas of application:

For use as a roofing underlay or facade membrane for ventilated and non-ventilated structures in combination with all roof and facade materials such as titanium zinc, aluminium, stainless steel, galvanised steel, copper etc. Fibrous membranes offer greater protection for structures and are recommended by leading providers of metal roofs for this reason. The 8 mm (5/16") thick 3D separation mesh made of fibrous PP protects the covering against waterlogging and dampens noise caused by rain or hail.



Advantages:

- ✓ Highest possible durability and thermostability thanks to the TEEE functional film
- ✓ Reliable drying out: highly permeable (s_d value = 0.05 m ; g value = 0.25 MN·s/g ; 65 US perms)
- ✓ Protects against corrosion and ensures improved noise insulation thanks to the 3D separation mesh
- ✓ Dry building components thanks to pore-free TEEE functional film that is resistant to driving rain
- ✓ Up to 3 months of outdoor exposure
- ✓ Quick and reliable adhesion thanks to the integrated 'connect' self-adhesive strips on the long edges of the membrane



Technical specifications:

| | | |
|--------------------------------|----------------|--|
| Protective and covering fleece | | Polypropylene microfibre |
| Functional film | | TEEE, monolithic |
| Surface weight | EN 1849-2 | 420 g/m ² ; 1.38 oz/ft ² |
| s_d value | EN ISO 12572 | 0.05 m |
| Outdoor exposure | | 3 months |
| Tensile strength MD/CD | EN 13859-1 (A) | 220 N/5cm / 170 N/5cm ; 25 lb/in / 19 lb/in |
| Temperature resistance | | Permanent -40 °C to +100 °C ; -40 °F to 212 °F |

Supply forms:

Length: 25 m (82'); width: 1.50 m (59")

Further information on SOLITEX UM connect

- Installation videos
- Detailed CAD drawings
- And much more:



SOLITEX UM connect
Roofing underlay membrane with
3D separation mesh and self-adhesive strips



Rainproof or waterproof sub-roofs

SOLITEX WELDANO® 3000 system

Diffusion-open, weldable roofing underlay membrane

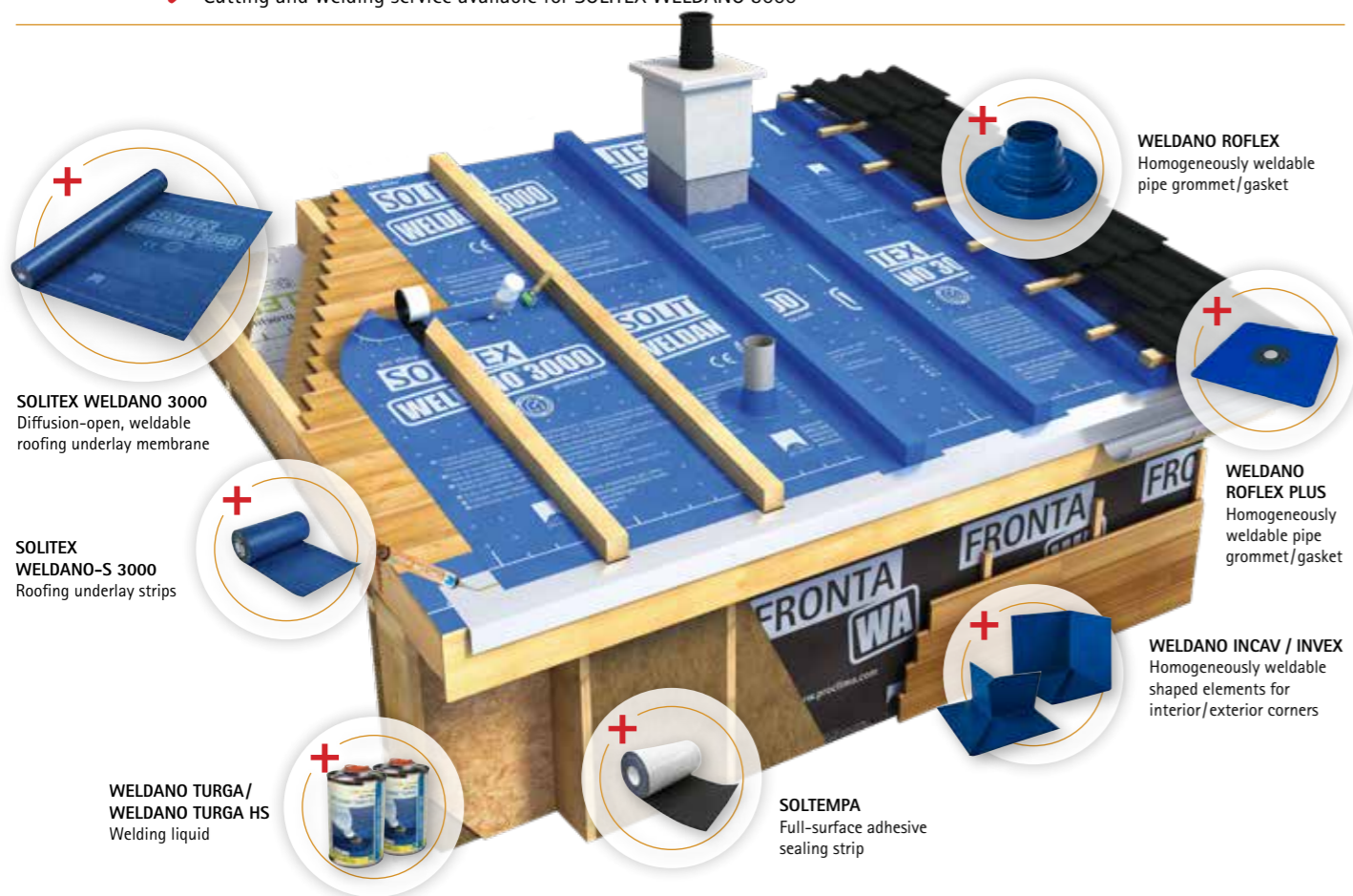
Areas of application:

For use as a 3-ply diffusion-open, homogeneously weldable, rainproof/watertight roofing underlay membrane. Suitable for installation over pressure-resistant substrates, e.g. timber sheathing, wood-based panels and wood-fibre underlay panels, and under roof-integrated solar panels.



Advantages:

- ✓ Reliable seam sealing: homogeneously weldable
- ✓ Suitable for use under roof-integrated solar panels*
- ✓ Excellent occupational safety: non-slip and abrasion-resistant surface
- ✓ Protects structural elements against dampness: diffusion-open, rainproof against driving rain and hail-resistant (HR 5)
- ✓ Easy to work with: robust with extremely high tear-resistance
- ✓ Suitable as a sub-roof underlay to fulfil the most stringent requirements
- ✓ Also keeps structural elements dry during the construction phase: excellent protection against driving rain thanks to monolithic membrane
- ✓ Cutting and welding service available for SOLITEX WELDANO 3000



SOLITEX WELDANO 3000
Diffusion-open, weldable
roofing underlay membrane

SOLITEX
WELDANO-S 3000
Roofing underlay strips

WELDANO TURGA/
WELDANO TURGA HS
Welding liquid

SOLTEMPA
Full-surface adhesive
sealing strip

WELDANO ROFLEX
Homogeneously weldable
pipe grommet/gasket

WELDANO
ROFLEX PLUS
Homogeneously
weldable pipe
grommet/gasket

WELDANO INCAV / INVEX
Homogeneously weldable
shaped elements for
interior/exterior corners



Install pre-prepared roofing underlays more quickly and conveniently with the pro clima cutting and welding service

NEW: Also suitable for use under roof-integrated solar panels*

*These panels have to be watertight and UV-impermeable.

Technical specifications:

| | | |
|-----------------------------|----------------|--|
| Functional film, both sides | | TPU, monolithic |
| Backing fleece | | Polyester |
| Surface weight | EN 1849-2 | 350 g/m ² ; 1.15 oz/ft ² |
| s _d value | EN ISO 12572 | 0.18 m |
| Outdoor exposure | | 6 months ** / 4 months *** |
| Driving rain test | TU Berlin, GHS | Passed |
| Hail impact resistance | VKF / AEAI | Class HR 5 |
| Tensile strength MD/CD | EN 13859-1 (A) | 320 N/5cm / 400 N/5cm ; 37 lb/in / 46 lb/in |

** Central/Northern Europe & Canada/Northern US *** Southern Europe, Southern US, rest of world

Supply forms:

Length: 25 m (82'); 50 m (164'); 400 m (1312'); width: 1.50 m (4' 11"); 3.00 m (9' 10")

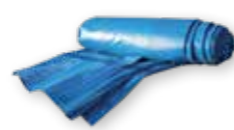


Further information on SOLITEX WELDANO 3000

- Installation videos
- Detailed CAD drawings
- And much more:



SOLITEX WELDANO 3000
Diffusion-open, weldable roofing
underlay membrane



SOLITEX WELDANO 3000
Cutting and welding service

[proclima.info/en/
solitex-weldano-3000](http://proclima.info/en/solitex-weldano-3000)



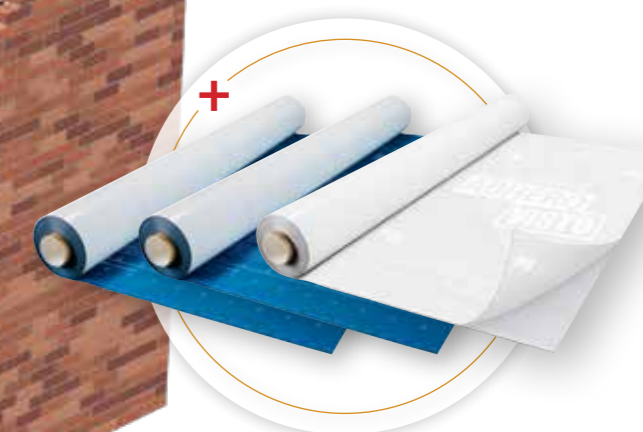
[proclima.info/en/
solitex-weldano-3000/caus](http://proclima.info/en/solitex-weldano-3000/caus)



Temporary weather protection during construction



Also available: Transparent membrane



SOLITEX ADHERO
System with full-surface adhesive airtightness
and weathering-protection membranes
Page 22



Two all-rounders for interior and exterior use

Adhesive tape
TESCON VANA



Joint adhesive
ORCON F



Weather protection concept during the construction phase

SOLITEX® ADHERO

Full-surface adhesive airtightness and weathering-protection membranes

Areas of application:

Temporary protection for floors during construction: Thanks to their full-surface adhesion, these membranes provide temporary protection for intermediate floors on multi-storey CLT (cross-laminated timber) or wooden-frame buildings during the construction period. Pitched roofs and walls (SOLITEX ADHERO 1000 and 3000): These membranes allow airtightness to be achieved on wood-based products and mineral substrates – e.g. on the exterior side of unplastered (fair-faced) masonry or concrete components with joints. For roofs, they also fulfil the requirements of the Central Association of the German Roofing Trade (ZVDH) for an underlay and for temporary coverings for the specified time periods.



Advantages:

- ✓ Protects the structure: maximum protection against driving rain
- ✓ For safe, practical construction work: robust and anti-slip surface
- ✓ Easy and reliable installation thanks to split release film – adheres immediately to substrates that have sufficient stability
- ✓ SOLITEX ADHERO 3000 / VISTO: Reliable sticking of membrane overlaps thanks to water-resistant SOLID adhesive
- ✓ Permanent protection thanks to the high resistance to ageing and heat of the membranes
- ✓ Up to 5 months of outdoor exposure

SOLITEX ADHERO 1000/3000/VISTO



ORCON F / ORCON MULTIBOND Joint adhesives

Also available: Transparent membrane

Also available: Transparent membrane



Technical specifications:

Also available: Transparent membrane

| | SOLITEX ADHERO 1000 | SOLITEX ADHERO 3000 | SOLITEX ADHERO VISTO |
|--|--|--|--|
| Protective and covering fleece | Polypropylene microfibre | Polypropylene microfibre | – |
| Fleece | – | – | Polypropylene |
| Functional film | TEEE, monolithic | TEEE, monolithic | Polyethylene copolymer |
| Adhesive | Special acrylate adhesive | Water-resistant SOLID adhesive | Water-resistant SOLID adhesive |
| Surface weight | 180 g/m ² ; 0.59 oz/ft ² | 240 g/m ² ; 0.79 oz/ft ² | 210 g/m ² ; 0.69 oz/ft ² |
| s _p value | 0.30 m | 0.40 m | 3.00 m |
| Outdoor exposure, pitched roofs*/walls | 3 / 3 months | 4 / 5 months | – |
| Outdoor exposure, temp. protection for floors | 28 days | 28 days ** | 3 months *** / 6 weeks **** |
| Hail impact resistance, pitched roofs/closed facades | Class HR 5 | Class HR 5 | – |
| Hail impact resistance, floors/walls | Passed | Passed / Class HR 4 | Passed / Class HR 5 |

* Pitched roofs with pitch ≥14° (3:12) ** 42 days after consultation with pro clima Technical Support
 *** Central/Northern Europe & Canada/Northern US **** Southern Europe, Southern US, rest of world



Supply forms:

Length: 30 m (98' 5"); width: 0.30 m (11 3/4"); 0.50 m (19 5/8"); 1.00 m (39 3/8"); 1.50 m (59")

Further information on SOLITEX ADHERO

- Installation videos
- Detailed CAD drawings
- And much more:

proclima.info/en/temporary-protection



SOLITEX ADHERO 1000
 Light-weight full-surface adhesive, diffusion-open airtightness and weathering-protection membrane



SOLITEX ADHERO 3000
 Medium-weight full-surface adhesive, diffusion-open airtightness and weathering-protection membrane



Also available: Transparent membrane
SOLITEX ADHERO VISTO
 Transparent full-surface adhesive airtightness and weathering-protection membrane

German Social Accident Insurance (DGUV) certification for anti-slip surfaces



SOLITEX ADHERO 1000



SOLITEX ADHERO 3000



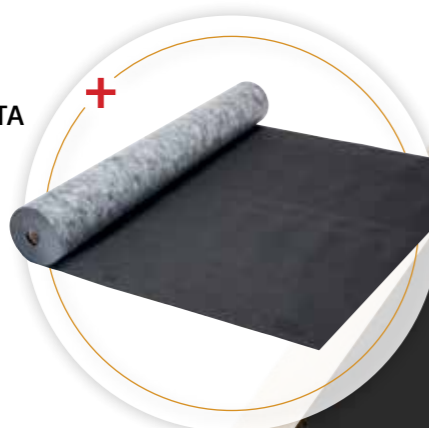
SOLITEX ADHERO VISTO

Breather membranes for exterior walls

SOLITEX FRONTA PENTA

Breather membrane (WRB) system for facades with open-jointed cladding with a gap width of up to 50 mm (2")

Page 26



SOLITEX FRONTA QUATTRO

Breather membrane (WRB) system for facades with open-jointed cladding with a gap width of up to 35 mm (1 3/8")

Page 26



SOLITEX FRONTA QUATTRO FB

Flame-resistant breather membrane (WRB) for open-jointed cladding with a gap width of up to 35 mm (1 3/8")

Page 26

Fire class B



Three all-rounders for interior and exterior use

Adhesive tape TESCON VANA



Adhesive tape TESCON INVIS



Joint adhesive ORCON F



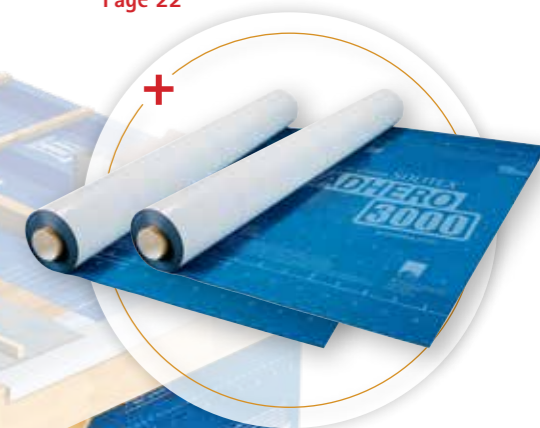
CONTEGA

Window-sealing system for timber and masonry constructions

SOLITEX ADHERO

System with full-surface adhesive airtightness and weathering-protection membranes

Page 22



SOLITEX FRONTA WA:

Breather membranes (WRB) system for closed rainscreen facades

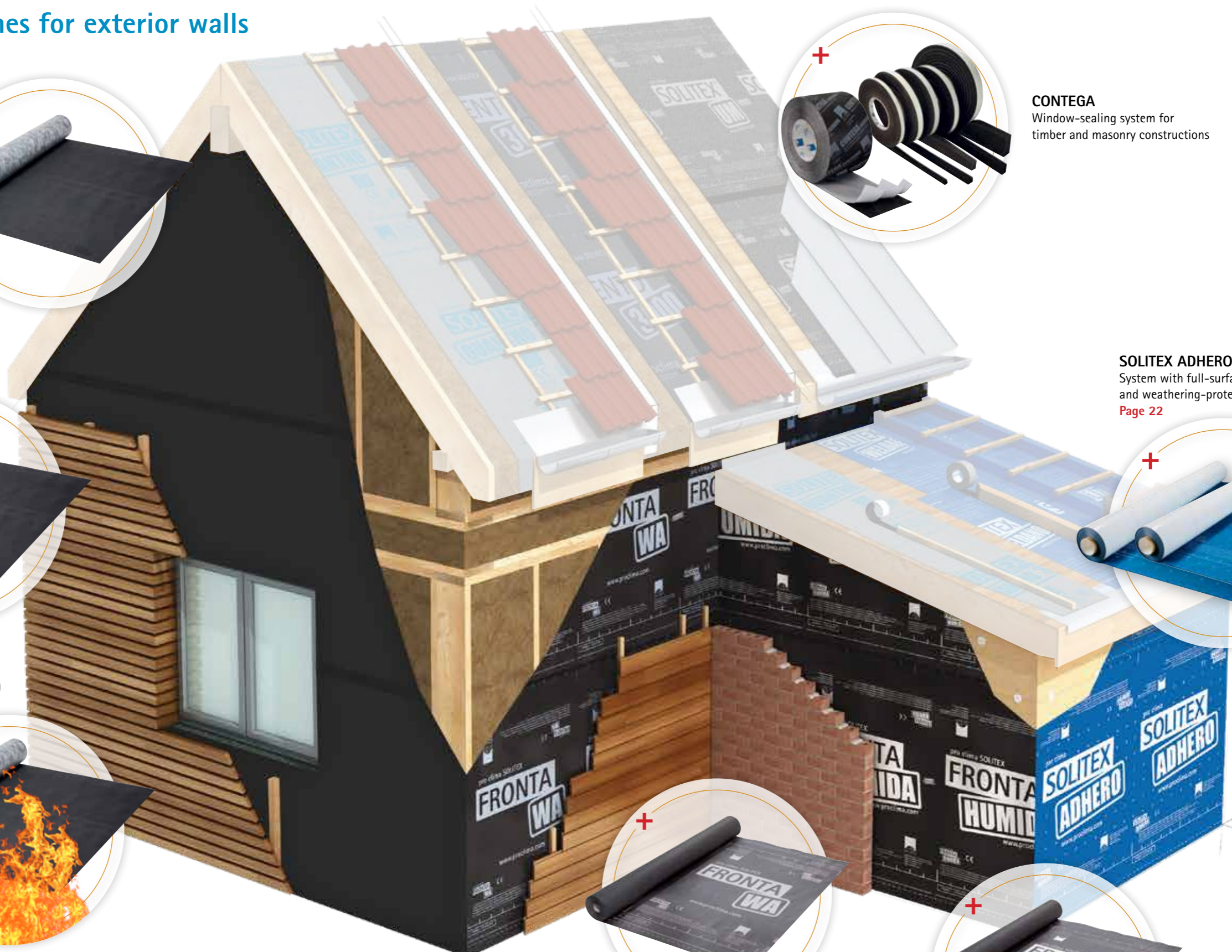
Page 26



SOLITEX FRONTA HUMIDA

Breather membrane (WRB) system for use on timber wall structures behind ventilated pre-wall shells

Page 26



Breather membranes (WRBs), e.g. with the

SOLITEX FRONTA® QUATTRO system

Breather membrane (WRB) for open-jointed cladding with a gap width of up to 35 mm (1 3/8"), also available with self-adhesive strips

Areas of application:

For use as a breather membrane (weather-resistant barrier, WRB) behind closed and open facades (open-jointed cladding up to a gap width of 35 mm (1 3/8")); cladding width = at least 3 x gap width). Installation onto boarding, wood-based panels and all mat or panel-shaped thermal insulation materials.



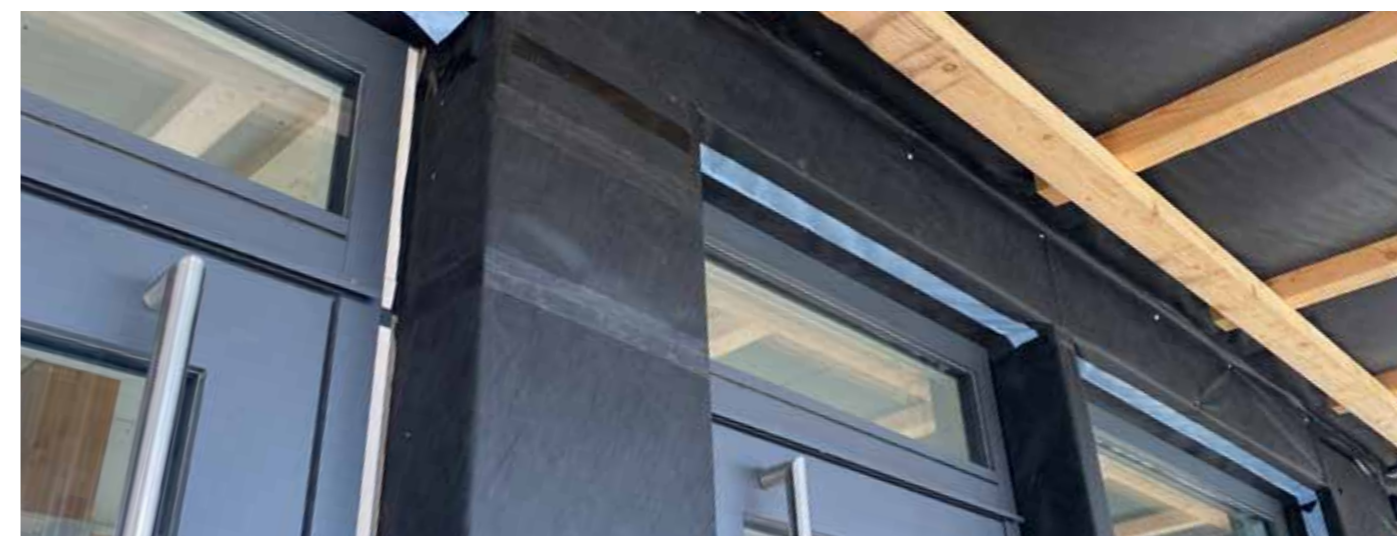
Advantages:

- ✓ Well-protected building components: highly permeable and, at the same time, maximum protection against driving rain
- ✓ Dry building components: pore-free TEEE functional film actively transports moisture to the outside
- ✓ Not visible behind open-jointed cladding: black fleece with printed marking only in the overlap area
- ✓ Highest possible durability and thermostability thanks to the TEEE functional film
- ✓ 6 months of outdoor exposure

SOLITEX FRONTA QUATTRO
Breather membrane (WRB)
for open-jointed cladding,
gap width up to
35 mm (1 3/8")



**ORCON F /
ORCON MULTIBOND**
Joint adhesives



Technical specifications:

| | | SOLITEX FRONTA WA | SOLITEX FRONTA HUMIDA |
|------------------------------------|---------------------------|---|---|
| Protective and covering fleece | | Polypropylene microfibre | Polypropylene microfibre |
| Functional film | | TEEE, monolithic | Monolithic polymer mixture |
| Surface weight | EN 1849-2 | 100 g/m ² ; 0.38 oz/ft ² | 115 g/m ² ; 0.33 oz/ft ² |
| s _d value | EN ISO 12572* / EN 1931** | 0.05 m* | 0.50 m** |
| Outdoor exposure | | 3 months | 3 months |
| Tensile strength MD/CD | EN 13859-2 (A) | 210 N/5cm / 140 N/5cm ; 24 lb/in / 16 lb/in | 220 N/5cm / 150 N/5cm ; 25 lb/in / 17 lb/in |
| Durability after artificial ageing | EN 1297 / EN 1296 | Passed | Passed |
| Temperature resistance | | Permanent -40 °C to +100 °C ; -40 °F to 212 °F | Permanent -40 °C to +100 °C ; -40 °F to 212 °F |

| | SOLITEX FRONTA QUATTRO | SOLITEX FRONTA QUATTRO FBS | SOLITEX FRONTA PENTA |
|------------------------------------|--|---|--|
| Protective and covering fleece | Polypropylene microfibre | Polypropylene microfibre | 3 x polypropylene microfibre |
| Functional film | TEEE, monolithic | Monolithic | 2 x TEEE, monolithic |
| Surface weight | 180 g/m ² ; 0.59 oz/ft ² | 145 g/m ² ; 0.48 oz/ft ² | 280 g/m ² ; 0.92 oz/ft ² |
| s _d value | 0.05 m* | 0.08 m* | 0.2 m* |
| Outdoor exposure | 6 months | 6 months | 6 months |
| Tensile strength MD/CD | 290 N/5cm / 220 N/5cm ; 33 lb/in / 25 lb/in | 260 N/5cm / 225 N/5cm ; 30 lb/in / 26 lb/in | 480 N/5cm / 340 N/5cm ; 55 lb/in / 39 lb/in |
| Durability after artificial ageing | Passed (for walls with open joints) | Passed (for walls with open joints) | With 10,000 h of UV ageing instead of 5,000 h: Passed (for walls with open joints) |
| Temperature resistance | Permanent -40 °C to 100 °C ; -40 °F to 212 °F | Permanent -40 °C to 80 °C ; -40 °F to 176 °F | Permanent -40 °C to 100 °C ; -40 °F to 212 °F |

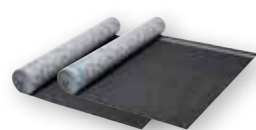
Supply forms:

Length: 50 m (164'); width: 1.50 m (4' 11"); 3.00 m (9' 10"); SOLITEX FRONTA PENTA also available in L x W: 25 m x 3.00 m (82' x 9' 10")



Other membranes and further information on SOLITEX FRONTA QUATTRO

- Installation videos
- Detailed CAD drawings
- And much more:



SOLITEX FRONTA QUATTRO
Breather membrane (WRB) for
open-jointed cladding,
gap width up to 35 mm (1 3/8")



SOLITEX FRONTA QUATTRO FB
Flame-resistant breather membrane
(WRB) for open-jointed cladding,
gap width up to 35 mm (1 3/8")



SOLITEX FRONTA PENTA
Breather membrane (WRB) for
open-jointed cladding,
gap width up to 50 mm (2")

Particularly UV-stable for wider cladding gaps



SOLITEX FRONTA WA
Breather membrane (WRB)



SOLITEX FRONTA HUMIDA
Breather membrane (WRB) for use
behind ventilated pre-wall shells in
accordance with DIN 68800-2



Support and advice on technical issues



Quick answers relating to building physics, construction, systems or products. Our engineers from the field of Timber and General Construction can help you quickly and simply in an expert manner and help you find solutions for cost-effective, reliable constructions that will create healthy living environments.

Phone: +49 6202 2782 45

E-mail: support@proclima.com

proclima.info/en/technical-support

Technical support



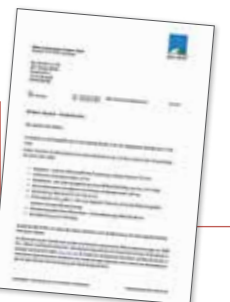
- ✓ Quick answers to your questions relating to building physics
- ✓ Engineers from pro clima's Application Technology department can help you with their specialist knowledge
- ✓ Evaluation of structures and designs
- ✓ Advice on applications and use of systems and products
- ✓ Evaluation and approval of structures and components

Component tests and building physics assessments

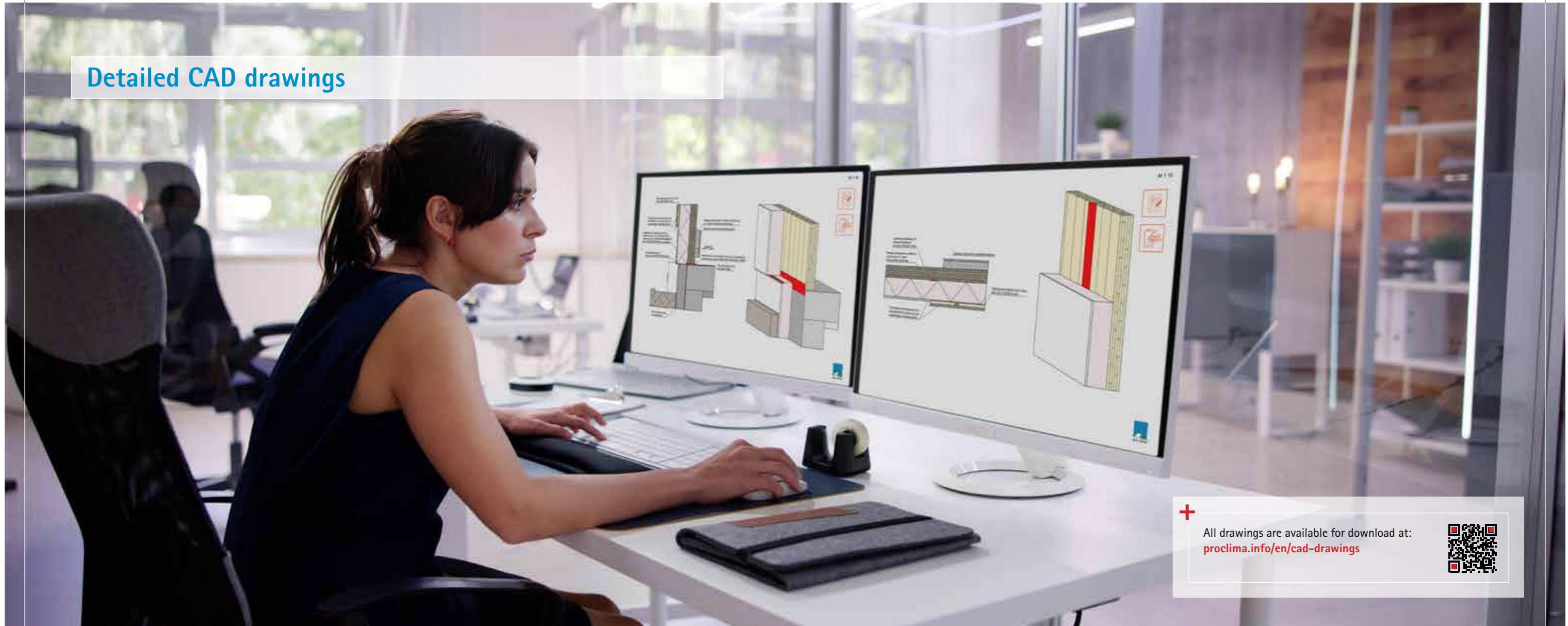
Feel free to contact us with your questions on the moisture-related evaluation of components. We can check and evaluate your building components – including flat-roof structures with complex building physics behaviour – and provide reassurance in terms of your liability as an advisor.

- ✓ Quick, free-of-charge evaluation of the moisture-related behaviour of components
- ✓ Greater reassurance and reduced liability for your advice services
- ✓ Testing and evaluation with building physics software from the Fraunhofer Institute for Building Physics
- ✓ Walls, floors/ceilings, pitched roofs
- ✓ Also for structures with complex building physics behaviour, e.g. flat roofs

Contact us at: support@proclima.com



Detailed CAD drawings

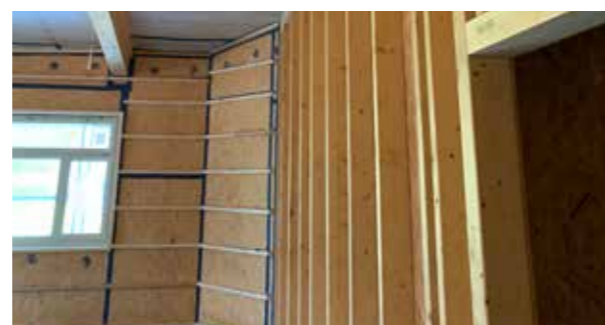
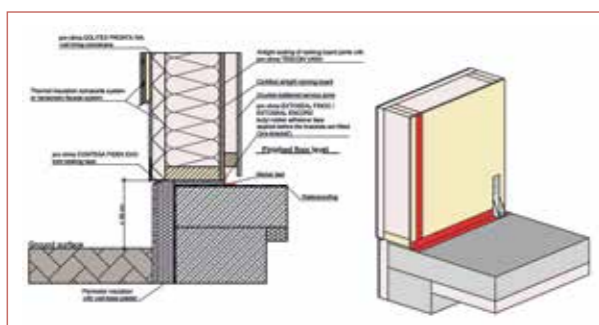


All drawings are available for download at:
proclima.info/en/cad-drawings

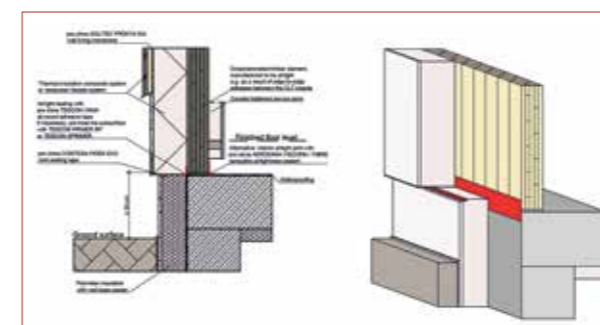


The pro clima database of CAD detail features provides you with a range of suggested solutions for planning and implementing your construction projects. Drawings showing how to achieve airtightness and windtightness at detail features are available to be downloaded for free in the form of DWG files, DXF files or PDF files. The drawings are grouped by construction type (timber frame and solid timber construction) and by the type of details – for example: base joints, component transitions, pitched roofs, flat roofs, windows and penetrations. A number of variants are available for many of the construction situations.

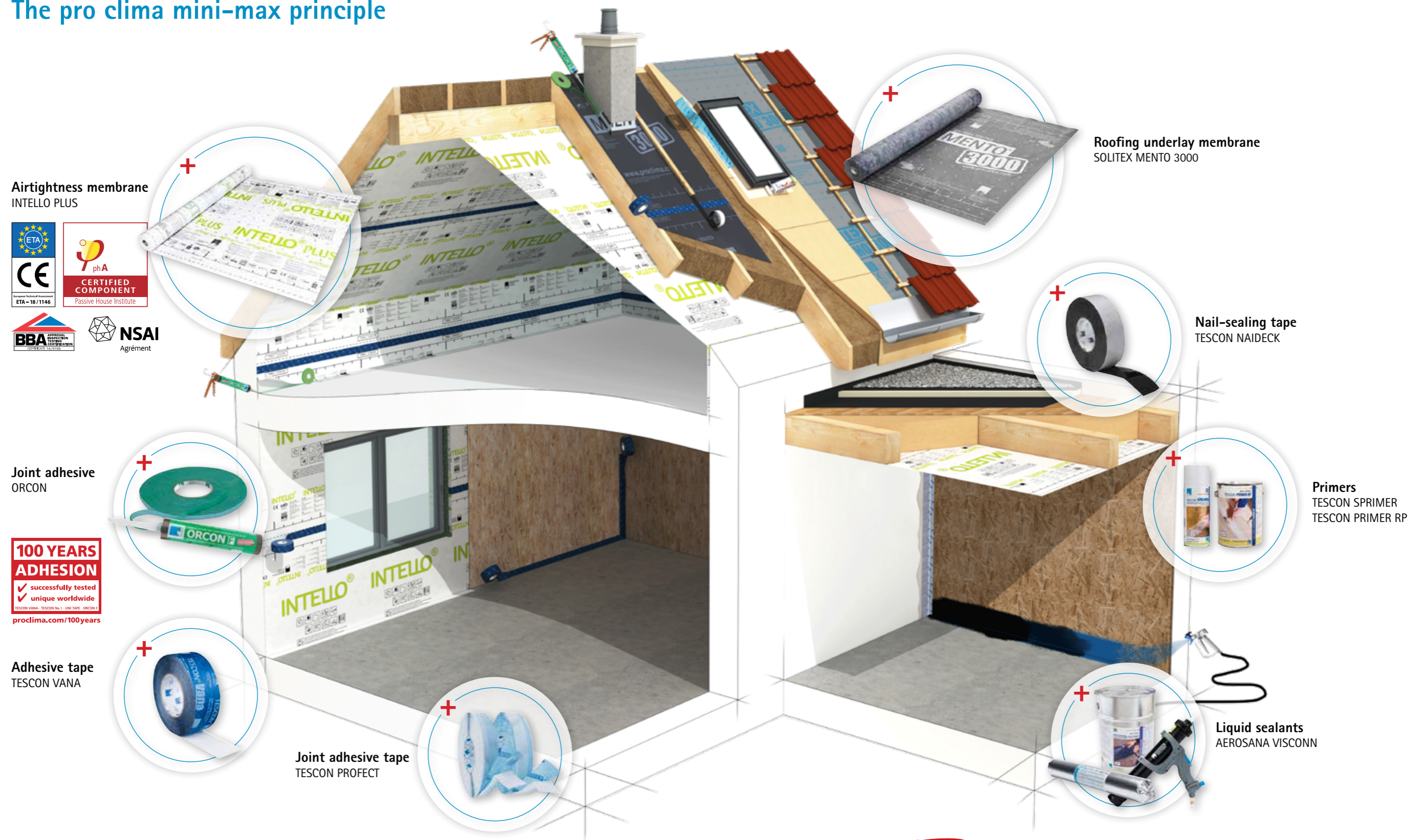
Timber Frame Construction detail features



Solid Timber Construction detail features



The pro clima mini-max principle



Maximum versatility with our core system products

The pro clima core system consists of just these few products. With these products, you will have a reliable solution available to you for almost all your construction needs. And if you have to contend with special requirements, you can always make use of pro clima's full range.

You can depend on us – pro clima warranty

You can count on the quality, durability and reliability of the pro clima system. In the unlikely event of problems, we will support you with our comprehensive, transparent and fair warranty:



- ✓ Comprehensive support if damage should occur
- ✓ Warranty period within the pro clima system is twice as long as the statutory requirement
- ✓ Including removal, disposal, replacement materials and new installation

We provide the following warranties for the pro clima airtightness system and for individual pro clima construction products in combination with all approved thermal insulation materials and for the SOLITEX system for pitched roofs and external walls:



10-year warranty

... if products are installed solely in combination with pro clima standard products, insofar as products are available within the pro clima system for the relevant application.

6-year warranty

... if the products are installed in combination with products from third parties.



The benefits for you:

- ✓ Exact coordination of products with one another and with the relevant substrates.
- ✓ Selection of bonding products is easy within the pro clima range.
- ✓ 95% of pro clima products are installed on the building site within three months of being supplied by traders.
- ✓ Warranty claims arising from purchase contracts for construction materials and building components generally expire after five years.
- ✓ pro clima offers a system warranty of up to 10 years, which means you can really depend on us!



The complete scope of this warranty can be found here:
proclima.com/products/system-warranty



Aparthotel built to Passive House standards, Vitoria-Gasteiz, Spain

The largest hotel building in the world that is certified according to Passive House standards:

| | |
|-----------------------|---------------------------|
| Year of construction: | 2023 |
| Architects: | A54 Arquitectos |
| Building type: | Hotel |
| Developer: | Kategora |
| Products used: | INTELLO PLUS, TESCON VANA |

Inspirational designs from around the world



Here you can find out more about impressive building projects that use pro clima products:
proclima.info/en/project-gallery



pro clima Project gallery

From innovative passive house designs in Sweden to the conversion of an old barn into a craft brewery in Canada or circular timber construction methods in Japan – all around the world, architects and project planners are incorporating pro clima solutions into their mould-breaking designs

Examples:

Kowhai Cabin in Ohakune, New Zealand



Mediterranean passive house residence in Barcelona, Spain



Waterside passive house in Greenport, Long Island, USA



National Library of Australia, Canberra



Suppliers and distributors around the world

pro clima is a pioneer in intelligent airtightness. We are active all around the world, supplying complete sealing systems for interior and exterior use – with intelligent membranes, solutions for connections, and a full range of associated services.

Head office:

pro clima – MOLL bauökologische Produkte GmbH

Rheintalstraße 35–43 · 68723 Schwetzingen · Germany

Phone: +49 6202 2782 0

info@proclima.com

proclima.com



Australia

pro clima Australia Pty Ltd
Level 3, 15 – 21 Doody St.
Alexandria, Sydney, NSW 2015
☎ +61 2 9160 8300
welcome@proclima.com.au
www.proclima.com.au

Austria

Vinzenz Harrer GmbH
Badl 31, 8130 Frohnleiten
☎ +43 3127 2094 5
☎ +43 3127 2094 5218
office@harrer.at
www.harrer.at

Belgium

ISOPROC
Boterstraat 23a
2811 Mechelen (Hombeek)
☎ +32 15 62 39 35
info@isoproc.be
www.isoproc.be
be-nl.proclima.com
be-fr.proclima.com

Bulgaria

For a list of stockists
please contact:
worldwide-support@
proclima.com
www.proclima.com

Canada

475 High Performance
Building Supply
1425 Marine Drive, Suite #207
West Vancouver, BC
V7T 1B9
☎ +1 800 – 995 63 29
info@475.supply
ca.475.supply

Chile

For a list of stockists
please contact:
worldwide-support@
proclima.com
www.proclima.com

Czech Republic

CIUR a.s.
Pražská 1012
250 01 Brandýs nad Labem
☎ +420 326 901 411
☎ +420 326 901 456
info@ciur.cz
www.ciur.cz
www.pro-clima.cz

Denmark

BetaPack a/s
Agerskovvej 9
8362 Hørning
☎ +45 70 20 87 00
js@betapack.dk
www.betapack.dk

Estonia

Tervemaja OÜ
Tähe 135A
50107 Tartu
☎ +372 740 55 09
☎ +372 56 509 709
tervemaja@tervemaja.ee
www.tervemaja.ee
ee.proclima.com

Finland

Tiivistalo / Redi-Yhtiöt Oy
Yrittäjätie 24
01800 KLAUKKALA
☎ +358 (0)207 439 670
info@tiivistalo.fi
www.tiivistalo.fi

France

pro clima France SARL
3 quai Jacques Sturm
67000 Strasbourg
☎ +33 1 86 37 00 70
info@proclima.info
www.proclima.info

Great Britain

Ecological Buildings Systems
Cardewlees, Carlisle
Cumbria, CA5 6LF
☎ +44 1228 711 511
☎ +44 1228 712 280
info@ecological
buildingsystems.com
www.ecologicalbuilding
systems.com

Greece

Aerismos.gr
Lysiou 11, Ilioupoli, 16346
☎ +30 210 9714722
info@aerismos.gr
www.aerismos.gr

Iceland

Redder ehf byggingalausnir
Hyrjarhofda 2
110 Reykjavik
☎ +35 45 58 08 88
redder@redder.is
www.redder.is

Ireland & Northern Ireland

Ecological Building Systems
Main Street, Athboy
County Meath
C15 Y678
☎ +353 46 94 32 104
info@ecological
buildingsystems.com
www.ecologicalbuilding
systems.com

Italy

Naturalia-Bau srl
Via Carlo Abarth Str. 20
39012 Meran / Merano (BZ)
☎ +39 0473 499 050
☎ +39 0473 499 060
info@naturalia-bau.it
www.naturalia-bau.it

Japan

EcoTransfer Japan K.K.
Imas Office Bakurocho Bldg. 6F
1-5-6 Nihonbashi Bakurocho
Chuo-ku, Tokyo 103-0002
☎ +81 50 34 95 – 25 80
☎ +81 50 34 58 – 06 37
info@ecotransfer-japan.com
www.ecotransfer-japan.com

Kazakhstan

50 Pascal (TOO Greenbuild)
Zenkova Str. 22, 124
050000 Almaty
☎ +7 705 962 3463
info@50pascal.ru
www.50pascal.ru

Latvia

Artiva Ltd
Sila iela 9 Riga, LV-1057
Office: Katlakalna iela 1,
Riga, LV-1073
☎ +371 29 25 28 82
☎ +371 29 11 61 16
info@artiva.lv
www.artiva.lv
www.proclima.lv

Lithuania

Ekologiški statybos
produktai UAB
»ProClima« Atstovas Lietuvoje
Parašykite: info@proclima.lt
www.proclima.lt

Luxembourg

MOLL bauökologische
Produkte GmbH
Rheintalstraße 35–43
68723 Schwetzingen
Germany
☎ +49 6202 2782 0
France
☎ +33 1 86 37 00 70

Mexico

For a list of stockists
please contact:
worldwide-support@
proclima.com
www.proclima.com

Netherlands

A list of stockists is
available at:
nl.proclima.com/service/
handelaren

New Zealand

Pro Clima NZ Ltd
Level 1, 47 The Esplanade
Petone, Lower Hutt 5012
☎ +64 4 589 8460
welcome@proclima.co.nz
www.proclima.co.nz

Norway

For a list of stockists
please contact:
worldwide-support@
proclima.com
www.proclima.com

Poland

For a list of stockists
please contact:
worldwide-support@
proclima.com
www.proclima.com

Portugal

EUROBUILD
Zona Industrial de Febres,
Lote 14
3060-318 Febres
☎ +351 231 027 943
info@eurobuild.pt
www.eurobuild.pt

Romania

nZEBshop - Magazin pentru
case inteligente
Strada Icoanei 15,
Sector 2, București
☎ +40 734 999 444
info@nzebshop.ro
www.nzebshop.ro

Russia

For a list of stockists
please contact:
worldwide-support@
proclima.com
www.proclima.com

Slovakia

VUNO HREUS, s.r.o.
Kvačalová 1207/47
010 04 Žilina
☎ +421 41 56 26 799
vuno@vuno.sk
www.vuno.sk
www.proclima.sk

Slovenia

Vinzenz Harrer GmbH
Badl 31
8130 Frohnleiten
Austria
☎ +43 3127 20 945
☎ +43 3127 20 945 218
office@harrer.at
www.harrer.at

South Korea

Proclima Korea
Suyang-ri 474-3
Gonjam-eup / Gwangju-si
529-851 GYEONGGI-DO
☎ +82 31 797 5473
☎ +82 31 797 5472
info@proclima.co.kr
www.proclima.co.kr

Spain

Sistemas Pasivos Materiales Activos S.L.
c/Eduardo Dato-42-1º
01005 Vitoria-Gasteiz
☎ +34 945 15 71 58
proclima@sistemaspasivos.es
www.sistemaspasivos.es

Sweden

For a list of stockists
please contact:
worldwide-support@
proclima.com
www.proclima.com

Switzerland

pro clima CH GmbH
Teichgässlein 9
4058 Basel
info@proclima.ch
www.proclima.ch

Turkey

For a list of stockists
please contact:
worldwide-support@
proclima.com
www.proclima.com

USA

475 High Performance
Building Supply
334 Douglass Street
Brooklyn, NY 11217
☎ +1 800 – 995 63 29
info@475.supply
www.475.supply

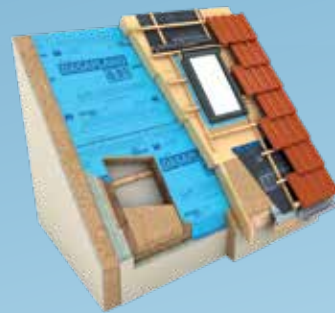
MOLL bauökologische Produkte GmbH
 Rheintalstraße 35-43 · 68723 Schwetzingen · Germany
 Phone: +49 6202 2782 0 · E-mail: info@proclima.com · proclima.com



Reliable system solutions for sealing building envelopes



The **INTELLO system** ensures well-protected building structures. Hydrosafe high-performance vapour check system with a humidity-variable s_d value of between 0.25 and over 25 m, DIBt approval for construction in accordance with standards.



Refurbishment made easy DASAPLANO combines ease of installation with reliability in service. Airtightness system for roof refurbishment from the outside.



Practical solutions for window joints Intelligent sealing tapes create reliable, durable joints between windows/doors and walls. Sealing systems tested by the IFT (Institute for Window Technology) in Rosenheim, Germany, for interior use, exterior use and sub-sill flashing.



proclima.com/100years



pro clima adhesive technology creates reliable, durable joints both indoors and outdoors. Dependable adhesive tapes with water-resistant SOLID acrylate technology, solvent-free adhesives and primers, grommets/gaskets and solutions for detail features.



Your pro clima partner