



# SOLITEX ADHERO

Weather protection concept during  
the construction phase



**+**  
NEW VARIANT:  
TRANSPARENT  
MEMBRANE

Reliable solutions for sealing building envelopes

## Weather protection concept during the construction phase

### SOLITEX® ADHERO

Full-surface adhesive, airtightness and weathering-protection membranes

#### Areas of application:

Temporary protection for floors during construction: Thanks to their full-surface adhesion, these membranes provide temporary protection for intermediate floors/ceilings on multi-storey CLT (cross-laminated timber) or wooden-frame buildings during the construction period.

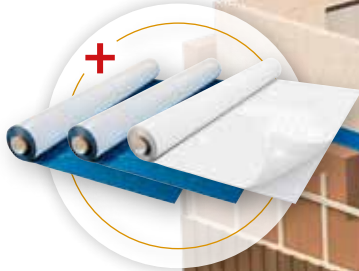
Pitched roofs and walls (SOLITEX ADHERO 1000 and 3000): These membranes allow airtightness to be achieved on wood-based products and mineral substrates – e.g. on the exterior side of unplastered (fair-faced) masonry or concrete components with joints. For roofs, they also fulfil the requirements of the Central Association of the German Roofing Trade (ZVDH) for a roofing underlay and for temporary coverings for the specified time period.



#### Advantages:

- ✓ Protects the structure: maximum protection against driving rain
- ✓ For safe, practical construction work: robust and anti-slip surface
- ✓ Easy and reliable installation thanks to split release film – sticks immediately to substrates that have sufficient stability
- ✓ SOLITEX ADHERO 3000 / VISTO: Reliable sticking of membrane overlaps thanks to water-resistant SOLID adhesive
- ✓ Permanent protection thanks to the high resistance to ageing and heat of the membranes
- ✓ Up to 5 months of outdoor exposure

SOLITEX ADHERO  
1000/3000/VISTO



ORCON F /  
ORCON MULTIBOND  
Joint adhesives

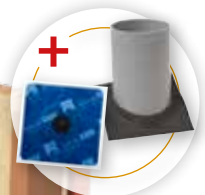


TESCON VANA  
Adhesive tape



New variant: transparent membrane

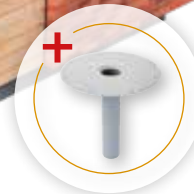
AEROSANA VISCONN  
Sprayable airtightness  
sealants



KAFLEX / ROFLEX  
Grommets



TESCON PRIMER RP/  
TESCON SPRIMER  
Primers



ADHERO Floor Drain  
as part of the SOLITEX  
ADHERO system



## Further information on SOLITEX ADHERO

- Introduction to system concept
- Reference projects
- Information brochures

[proclima.info/en/  
timber-protection](http://proclima.info/en/timber-protection)



**SOLITEX ADHERO 1000**  
Light, full-surface adhesive,  
diffusion-open airtightness and  
weathering-protection membrane



**SOLITEX ADHERO 3000**  
Medium-weight, full-surface adhesive,  
diffusion-open airtightness and  
weathering-protection membrane



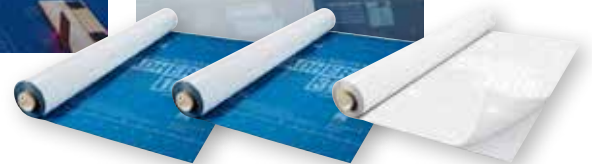
**New variant: transparent membrane**  
**SOLITEX ADHERO VISTO**  
Transparent, full-surface adhesive  
airtightness and weathering-  
protection membrane

## Protection of floors during the construction period



### Installation steps

Detailed installation instructions for protecting floor elements during the construction period can be found here:



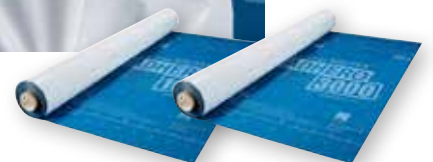
SOLITEX ADHERO 1000/3000/VISTO

## Airtightness and weather protection for walls



### Installation steps

Detailed installation instructions for creating airtightness and ensuring weather protection for walls can be found here:



SOLITEX ADHERO 1000/3000

German Social Accident Insurance (DGUV) certification for anti-slip surfaces



SOLITEX ADHERO 1000



SOLITEX ADHERO 3000



SOLITEX ADHERO VISTO



### Technical data:

	SOLITEX ADHERO 1000	SOLITEX ADHERO 3000	SOLITEX ADHERO VISTO
Protective and covering fleece	Polypropylene microfibre	Polypropylene microfibre	Polypropylene
Membrane	Monolithic TEEE	Monolithic TEEE	Polyethylene copolymer
Adhesive	Special acrylate adhesive	Water-resistant SOLID adhesive	Water-resistant SOLID adhesive
Release film	Silicone-coated PE film	Silicone-coated PE film	Silicone-coated PE film
Colour	dark blue	dark blue	translucent
Surface weight	180 g/m <sup>2</sup> ; 0.59 oz/ft <sup>2</sup>	240 g/m <sup>2</sup> ; 0.79 oz/ft <sup>2</sup>	210 g/m <sup>2</sup> ; 0.69 oz/ft <sup>2</sup>
Thickness	0.55 mm ; 22 mils	0.70 mm ; 28 mils	0.35 mm ; 14 mils
Water vapour resistance factor $\mu$	545	570	8 570
$s_d$ value / humidity variable	0.30 m / -	0.40 m / 0.3 - 0.8 m	3.00 m
g value / humidity variable	1.5 MN·s/g / -	2.0 MN·s/g / 1.5 - 4 MN·s/g	1.5 MN·s/g / -
Vapour permeance / humidity variable	11 perms / -	7 perms / 4.1 - 11 perms	1.1 perms / -
Fire rating	E	C - s1,d0	C s1,d0
Outdoor exposure for pitched roofs	≥14° (≥3:12): 3 months	≥14° (≥3:12): 4 months	-
Outdoor exposure for walls	3 months	5 months	-
Outdoor exposure protection for floor during construction	28 days	28 days	42 days
Hail impact resistance class (Switz.)	HR 5 / watertightness test passed	HR 5 / watertightness test passed	-
Water column	10 000 mm ; 32' 10"	10 000 mm ; 32' 10"	10 000 mm ; 32' 10"
Watertightness, non-aged/aged*	W1 / W1	W1 / W1	W1 / W1
Airtightness	-	-	passed
Tensile strength MD/CD	200 N/5 cm / 150 N/5 cm ; 23 lb/in / 17 lb/in	250 N/5 cm / 200 N/5 cm ; 29 lb/in / 23 lb/in	190 N/5 cm / 180 N/5 cm ; 22 lb/in / 21 lb/in
Elongation MD/CD	75 % / 75 %	70 % / 70 %	60 % / 60 %
Nail tear resistance MD/CD	120 N / 200 N ; 27 lbf / 45 lbf	170 N / 220 N ; 38 lbf / 49 lbf	250 N / 250 N ; 56 lbf / 56 lbf
*) Durability after artificial ageing	passed	passed	passed
Flexibility at low temperature	-40 °C ; -40 °F	-40 °C ; -40 °F	-40 °C ; -40 °F
Temperature resistance	permanent -40 °C to 100 °C ; -40 °F to 212 °F	permanent -40 °C to 100 °C ; -40 °F to 212 °F	permanent -40 °C to 80 °C ; -40 °F to 176 °F
Thermal conductivity	0.04 W/(m·K) ; 0.3 BTU·in/(h·ft <sup>2</sup> ·F)	0.04 W/(m·K) ; 0.3 BTU·in/(h·ft <sup>2</sup> ·F)	0.04 W/(m·K) ; 0.3 BTU·in/(h·ft <sup>2</sup> ·F)
Roofing underlay membrane	UDB-B	UDB-A	-
Temporary roof covering; suitable as ...	yes	yes	-

### Supply forms:

Length: 30 m (98' 5"); Widths: 1.00 m (39 1/2"), 1.50 m (59")



SOLITEX ADHERO 1000 SOLITEX ADHERO 3000 SOLITEX ADHERO VISTO

PRESSFIX XL

**MOLL bauökologische Produkte GmbH**  
 Rheintalstraße 35 - 43 · D-68723 Schwetzingen · Germany  
 Tel.: +49 (0) 62 02 - 27 82.0 · eMail: info@proclima.com · proclima.com

