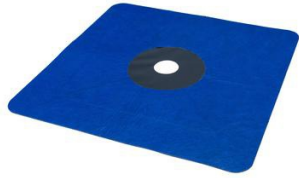


WELDANO ROFLEX PLUS

Homogeneously weldable pipe grommet for roof pitches between 3° and 50° (0.6:12 - 14:12)



Technical data

Material		
Main product component	Polyurethane-polyester composite, middle part extendible	
Property	Regulation	Value
Colour		Blue / anthracite
Thickness		2 mm ; 79 mils
Pipe diameter		90 - 125 mm ; 3.5" - 5"
sd value		0.6 m
g value		3 MN-s/g
Vapour permeance	ASTM E96	5.5 US perms
Outdoor exposure		3 months
Temperature resistance		Permanent -40 °C to 100 °C ; -40 °F to 212 °F

Areas of application

Homogeneously weldable pipe grommet for reliable installation of pipe feed-throughs within the SOLITEX WELDANO roofing underlay system. Suitable for roof pitches between 3° and 50° (0.6:12 - 14:12). The pre-fabricated grommet can be used to execute pipe feed-throughs in an easy, quick and permanently sealed manner.

To ensure a permanent seal even in the case of backed-up water, a strip of SOLITEX WELDANO-S 3000 must be welded to the resulting flange (see installation instructions).

The shaped element can be welded to the pro clima SOLITEX WELDANO 3000 roofing underlay membrane in a waterproof manner using the WELDANO TURGA system solvent welding agent or hot air.

Supply forms

Art. no.	GTIN	Length	Width	Contents	Weight
1AR00452	4026639204523	480 mm	480 mm	1 pieces	0.3 kg

Advantages

- ✓ Keeps building components dry: windproof, rainproof and waterproof
- ✓ Reliable seam tightness: homogeneously weldable with a solvent welding agent or hot air
- ✓ Easy to apply: extremely high tear-resistance and very stable
- ✓ For sealing in the case of backed-up water, the flange can simply be extended using SOLITEX WELDANO-S 3000
- ✓ For pipes with diameters of 90 - 125 mm

Substrates

Before adhesion, SOLITEX WELDANO 3000 should be wiped clean with a cloth. Adhesion to frozen surfaces is not possible. There must be no water-repellent substances (e.g. grease or silicone) on the membranes. Subsurfaces must be sufficiently dry and stable.

It is recommended that spot checks be performed to test the strength of the welded joints.

General conditions

When carrying out adhesion using hot air or a solvent welding agent, press the membranes firmly into place using a plastic roller, taking care to ensure that there is sufficient resistance pressure.

Rainproof and waterproof adhesion can only be achieved on roofing underlay membranes that have been installed with no folds or creases.



The information provided here is based on practical experience and the current state of knowledge. We reserve the right to make changes to the recommended designs and processing or to make alterations due to technical developments and associated improvements in the quality of our products. We would be happy to inform you of the current technical state of the art at the time you use our products.

Further information about installation and design details is available in the pro clima planning documentation. If you have any questions, please contact [pro clima Technical Support](<https://proclima.com/service/technical-support>).

MOLL
bauökologische Produkte GmbH
Rheinalstraße 35 - 43
D-68723 Schwetzingen
Phone: +49 (0) 62 02 - 27 82.0
E-mail: info@proclima.com

